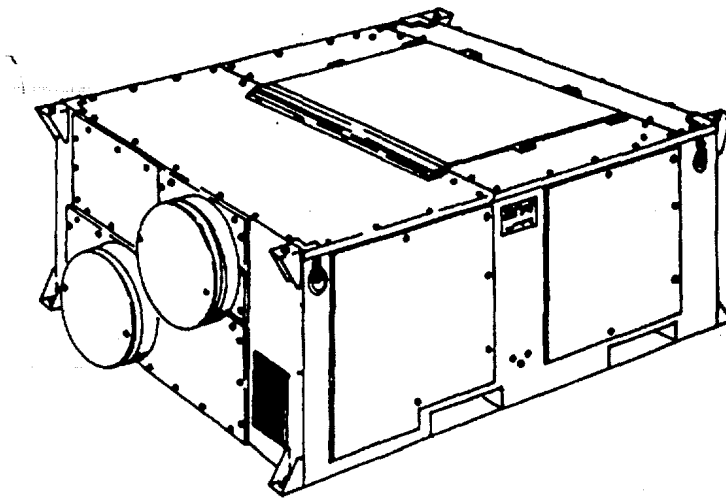


**TECHNICAL MANUAL**

**UNIT, DIRECT SUPPORT AND GENERAL SUPPORT  
MAINTENANCE MANUAL INCLUDING  
REPAIR PARTS AND SPECIAL TOOLS LIST**



**AIR CONDITIONER, 54,000 BTU/HR  
208/230 VOLT, THREE-PHASE,  
50/60 HERTZ, MODEL AH-54  
NSN 4120-01-283-4096**

DISTRIBUTION STATEMENT A: Approved for public release; distribution is unlimited.

CHANGE  
NO. 2

HEADQUARTERS  
DEPARTMENT OF THE ARMY  
WASHINGTON, D.C., 5 February 1996

Unit, Direct Support and General Support Maintenance  
Repair Parts and Special Tools List

**AIR CONDITIONER, 54,000 BTU/HR  
208/230 VOLT, THREE-PHASE, 50/60 HERTZ  
MODEL AH-54  
NSN 4120-01-283-4096**

DISTRIBUTION STATEMENT A: Approved for public release; distribution is unlimited.

TM 9-4120-398-24P, 30 April 1993, is changed as follows:

1. Remove and insert pages as indicated below. New or changed text material is indicated by a vertical bar in the margin. An illustration change is indicated by a miniature pointing hand.

Remove pages

9-1 and Figure 10  
14-1 and 14-2  
17-1 and Figure 18  
21-1 and BULK-1  
I-1 through I-4  
-----  
I-5 and I-6  
-----  
I-7 through I-10  
-----  
I-13 and I-14  
-----  
I-15 through I-18  
-----  
I-19 and I-20

Insert pages

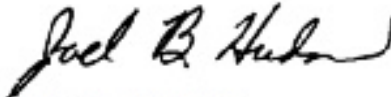
9-1 and Figure 10  
14-1 and 14-2  
17-1 and Figure 18  
21-1 and BULK-1  
I-1 through I-4  
I-4.1/(I-4.2 blank)  
I-5 and I-6  
I-6.1/(I-6.2 blank)  
I-7 through I-10  
I-10.1/(I-10.2 blank)  
I-13 and I-14  
I-14.1/(I-14.2 blank)  
I-15 through I-18  
I-18.1/(I-18.2 blank)  
I-19 and I-20

2. Retain this sheet in front of manual for reference purposes.

TM 9-4120-398-24P  
C 2

By Order of the Secretary of the Army:

Official:



JOEL B. HUDSON  
*Acting Administrative Assistant to the  
Secretary of the Army*  
01482

DENNIS J. REIMER  
*General, United States Army  
Chief of Staff*

**DISTRIBUTION:**

To be distributed in accordance with DA Form 12-25-E, block no. 6040, requirements for TM 9-4120-398-24P.

CHANGE  
NO. 1

HEADQUARTERS  
DEPARTMENT OF THE ARMY  
WASHINGTON, D.C., 15 July 1995

Unit, Direct Support and General Support Maintenance  
Repair Parts and Special Tools List

**AIR CONDITIONER, 54,000 BTU/HR  
208/230 VOLT, THREE-PHASE, 50/60 HERTZ  
MODEL AH-54  
NSN 4120-01-283-4096**

DISTRIBUTION STATEMENT A: Approved for public release; distribution is unlimited

TM 9-4120-398-24P, 30 April 1993, is changed as follows:

1. Remove and insert pages as indicated below. New or changed text material is indicated by a vertical bar in the margin. An illustration change is indicated by a miniature pointing hand.

Remove pages

i and ii

13-1 and Figure 14

I-1 through I-4

I-9 and I-10

I-15 and I-16

Insert pages

i and ii

13-1 and Figure 14

I-1 through I-4

I-9 and I-10

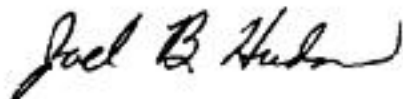
I-15 and I-16

2. Retain this sheet in front of manual for reference purposes.

**By Order of the Secretary of the Army:**

DENNIS J. REIMER  
*General, United States Army*  
*Chief of Staff*

Official:



*Acting Administrative Assistant to the  
Secretary of the Army*  
0038

**DISTRIBUTION:**

To be distributed in accordance with DA Form 12-25-E, block no. 6040, requirements for TM 9-4120-398-24P.

TECHNICAL MANUAL  
NO. 9-4120-398-24P

HEADQUARTERS  
DEPARTMENT OF THE ARMY  
WASHINGTON D.C., 30 April 1993

TECHNICAL MANUAL

Unit, Direct Support and General Support Maintenance  
Repair Parts and Special Tools List

**AIR CONDITIONER, 54,000 BTU/HR**  
**208/230 VOLT, THREE-PHASE, 50/60 HERTZ**  
**MODEL AH-54**  
**NSN 4120-01-283-4096**  
Current as of 29 May 1995

**REPORTING ERRORS AND RECOMMENDING IMPROVEMENTS**

You can help improve this manual. If you find any mistakes or if you know of a way to improve the procedures, please let us know. Mail your letter, DA Form 2028 (Recommended Changes to Publications and Blank Forms), or DA Form 2028-2 located in the back of this manual directly to: Commander, US Army Aviation and Troop Command, ATTN: AMBAT-I-MP, 4300 Goodfellow Blvd., St. Louis, MO 63120-1798. You may also submit your recommended changes by E-mail directly to <daf2028@st-louis-emh7.armymil>. A reply will be furnished directly to you.

DISTRIBUTION STATEMENT A: Approved for public release; distribution is unlimited.

**TABLE OF CONTENTS**

	Page	Illus/ Figure
Section I.	INTRODUCTION.....	1
Section II.	REPAIR PARTS LIST.....	1-1
Group 00	Air Conditioner	
Group 01	Frame Assembly	
	Frame.....	1-1 1
	Information Plates .....	2-1 2
Group 02	Housing Covers, Panels, Grilles, Doors, Screens	
	Front and Front Top Cover Installation .....	3-1 3
	Control Panel Cover Installation .....	4-1 4
	Left Access Door Installation .....	5-1 5
	Right Access Door Installation .....	6-1 6
	RH Panel and Top Panels Installation.....	7-1 7
	Condenser Grille and Cover Installation.....	8-1 8
	Rear Grille and Cover Installation.....	9-1 9
Group 03	Air Circulating and Condensate Drain System	
	Air Filter and Duct Installation.....	10-1 10
	Adapter Duct Installation.....	11-1 11
	Fresh Air Damper Installation .....	12-1 12
	Condensate Traps and Drain Hose Installation .....	13-1 13
Group 04	Electrical	
	External Control Panel and Internal Control Board.....	14-1 14
	Electrical Leads .....	15-1 15

TABLE OF CONTENTS (cont.)

	Page	Illus/ Figure
Group 05	Evaporator Blower Motors	
	Evaporator Blower and Plenum Installation.....	16-1 16
	Heater Assembly .....	17-1 17
Group 06	Condenser Fan Motor & Impeller .....	18-1 18
Group 07	Refrigeration System	
	Evaporator Coil Installation.....	19-1 19
	Condenser Coil Installation .....	20-1 20
	Compressor Installation .....	21-1 21
Section III.	SPECIAL TOOLS LIST (Not Applicable)	
Section IV.	CROSS REFERENCE INDEXES.....	I-1
	National Stock Number Index .....	I-1
	Part Number Index .....	I-3
	Figure and Item Number Index .....	I-12

**UNIT, DIRECT SUPPORT AND GENERAL SUPPORT  
MAINTENANCE REPAIR PARTS AND SPECIAL TOOLS LIST**

**SECTION I INTRODUCTION**

1. SCOPE. This RPSTL lists and authorizes spares and repair parts; special tools; special test, measurement, and diagnostic equipment (TMDE); and other special support equipment required for performance of unit, direct support and general support maintenance of the Air Conditioner. It authorizes the requisitioning, issue, and disposition of spares, repair parts and special tools as indicated by the source, maintenance and recoverability (SMR) codes.

2. GENERAL. In addition to this section, Introduction, this Repair Parts and Special Tools List is divided into the following sections:

a. Section II. Repair Parts List. A list of spares and repair parts authorized by this RPSTL for use in the performance of maintenance. This list also includes parts which must be removed for replacement of the authorized parts. Parts lists are composed of functional groups in ascending alphanumeric sequence, with the parts in each group listed in ascending figure and item number sequence. Bulk materials are listed in item name sequence. Repair parts kits are listed separately in functional groups in Section II. Repair parts for repairable special tools are also listed in this section. Items listed are shown in the associated illustration(s)/figure(s).

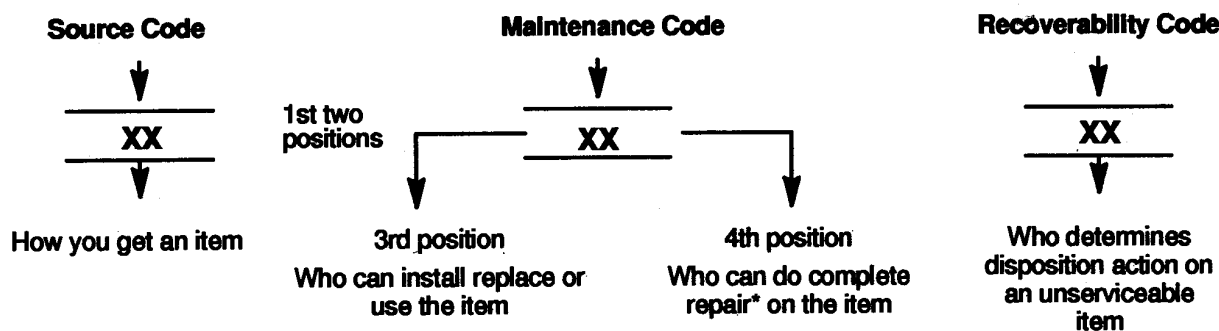
b. Section III. Special Tools List. A list of special tools, special TMDE, and other special support equipment authorized by this RPSTL (as indicated by Basis of Issue (BOI) information in DESCRIPTION AND USABLE ON CODE column) for the performance of maintenance.

c. Section IV. Cross-Reference Index. A list, in National Item Identification Number (NIIN) sequence, of all National stock numbered items appearing in the listing, followed by a list in alphanumeric sequence of all part numbers appearing in the listings. National stock numbers and part numbers are cross referenced to each illustration figure and item number appearance. The figure and item number index lists figure and item numbers in alphanumeric sequence and cross references NSN, CAGEC and part number.

3. EXPLANATION OF COLUMNS (SECTIONS II AND III).

a. ITEM NO. (Column (1)). Indicates the number used to identify items called out in the illustration.

b. SMR Code (Column (2)). The Source, Maintenance, and Recoverability (SMR) code is a 5-position code containing supply/requisitioning information, maintenance category authorization criteria, and disposition instruction, as shown in the following breakout:



\* Complete Rear: Maintenance capacity, capability, and authority to perform all corrective maintenance tasks of the "Repair" function in a use/user environment in order to restore serviceability to a failed item.

(1) Source Code. The source code tells you how you get an item needed for maintenance, repair, or overhaul of an end item/equipment. Explanations of source codes follows:

<b>Source Code</b>	<b>Explanation</b>
PA PB PC** PD PE PF PG	<p>Stocked items; use the applicable NSN to request/requisition items with these source codes. They are authorized to the category indicated by the code entered in the 3rd position of the SMR code.</p> <p>**NOTE : Items coded PC are subject to deterioration.</p>
KD KF KB	<p>Items with these codes are not to be requested/requisitioned individually. They are part of a kit which is authorized to the maintenance category indicated in the 3rd position of the SMR code. The complete kit must be requisitioned and applied.</p>
MO (Made at org AVUM level) MF (Made at DS/AVUM level) MH (Made at GS level) ML (Made at Specialized Repair Activity (SRA)) MD (Made at Depot)	<p>Items with these codes are not to be requested/requisitioned individually. They must be made from bulk material which is identified by the part number in the DESCRIPTION and USABLE ON CODE (UOC) column and listed in the Bulk Material group of the repair parts list in the RPSTL. If the item is authorized to you by the 3rd position code of the SMR code, but the source code indicates it is made at a higher level, order the item from the higher level of maintenance.</p>
AO (Assembled by Unit/ AVUM Level) AF (Assembled by DS/AVIM Level) AH (Assembled by GS Category) AL (Assembled by SRA) AD (Assembled by Depot)	<p>Items with these codes are not to be requested/requisitioned individually. The parts that make up the assembled item must be requisitioned or fabricated and assembled at the level of maintenance indicated by the source code. If the 3rd position code of the SMR code, authorizes you to replace the item, but the source code indicates the items are assembled at a higher level, order the item from the higher level of maintenance.</p>
XA	- - Do not requisition an "XA"-coded item. Order its next higher assembly. (Also, refer to the NOTE below.)
XB	- - If an "XB" item is not available from salvage, order it using the CAGE Code and part number given.
XC	- - Installation drawing, diagram, instruction sheet, field service drawing, that is identified by manufacturer's part number.
XD	- - Item is not stocked. Order an "XD"-coded item through normal supply channels using the CAGE Code and part number given, if no NSN is available.



**NOTE**

Cannibalization or controlled exchange, when authorized, may be used as a source of supply for items with the above source codes, except for those source coded "XA" or those aircraft support items restricted by requirements of AR 750-1

(2) Maintenance Code. Maintenance codes tell you the level(s) of maintenance authorized to USE and REPAIR support items. The maintenance codes are entered in the third and fourth positions of the SMR code as follows:

(a) The maintenance code entered in the third position tells you the lowest maintenance level authorized to remove, replace, and use an item. The maintenance code entered in the third position will indicate authorization to the following levels of maintenance.

**Maintenance Code**

**Application/Explanation**

C - Crew or operator maintenance done within unit/AVUM maintenance.

O - Unit level/AVUM maintenance can remove, replace, and use the item.

F - Direct support/AVIM maintenance can remove, replace, and use the item.

H - General support maintenance can remove, replace, and use the item.

L - Specialized repair activity can remove, replace, and use the item.

D - Depot can remove, replace, and use the item.

(b) The maintenance code entered in the fourth position tells whether or not the item is to be repaired and identifies the lowest maintenance level with the capability to do complete repair (i.e., perform all authorized repair functions). This position will contain one of the following maintenance codes.

**NOTE**

Some limited repair may be done on an item at a lower level of maintenance, if authorized by the Maintenance Allocation Chart (MAC) and SMR codes.

**Maintenance Code**

**Application/Explanation**

O - Unit/AVUM is the lowest level that can do complete repair of the item.

F - Direct support/AVIM is the lowest level that can do complete repair of the item.

H - General Support is the lowest level that can do complete repair of the item.

L - Specialized repair activity is the lowest level that can do complete repair of the item.

D - Depot is the lowest level that can do complete repair of the item.

Z - Nonreparable. No repair is authorized.

B - No repair is authorized. No parts or special tools are authorized for the maintenance of a "B" coded item. However, the item may be reconditioned by adjusting, lubricating, etc., at the user level.

(3) Recoverability Code. Recoverability codes are assigned to items to indicate the disposition action on unserviceable items. The recoverability code is entered in the fifth position of the SMR Code as follows:

**Recoverability  
Codes**

**Application/Explanation**

- Z - Nonreparable item. When unserviceable, condemn and dispose of the item at the level of maintenance shown in 3rd position of SMR Code.
- O - Repairable item. When not economically repairable, condemn and dispose of the item at unit or AVUM level.
- F - Repairable item. When uneconomically repairable, condemn and dispose of the item at the direct support or AVIM level.
- H - Repairable item. When uneconomically repairable, condemn and dispose of the item at the general support level.
- D - Repairable item. When beyond lower level repair capability, return to depot. Condemnation and disposal of item not authorized below depot level.
- L - Repairable item. Condemnation and disposal not authorized below specialized repair activity (SRA).
- A - Item requires special handling or condemnation procedures because of specific reasons (e.g., precious metal content, high dollar value, critical material, or hazardous material). Refer to appropriate manuals/directives for specific instructions.

c. CAGEC (Column (3)). The Commercial and Government Entity Code (CAGEC) is a 5-digit numeric code which is used to identify the manufacturer, distributor, or Government agency/activity that supplies the item.

d. PART NUMBER (Column (4)). Indicates the primary number used by the manufacturer, (individual, company, firm, corporation, or Government activity), which controls the design and characteristics of the item by means of its engineering drawings, specifications, standards, and inspection requirements to identify an item or range of items.

**NOTE**

When you use an NSN to requisition an item, the item you receive may have a different part number from the number listed.

e. DESCRIPTION AND USABLE ON CODE (UOC) (Column (5)). This column includes the following information:

(1) The Federal item name and, when required, a minimum description to identify the item.

(2) Part numbers of bulk materials are referenced in this column in the line entry for the item to be manufactured/fabricated.

(3) The statement "END OF FIGURE" appears just below the last item description in Column (5) for a given figure in both Section II and Section III.

f. QTY (Column (6)). The QTY (quantity per figure) column indicates the quantity of the item used in the breakout shown on the illustration/figure, which is prepared for a functional group, subfunctional group, or an assembly. A "V" appearing in this column instead of a quantity indicates that the quantity is variable and may vary from application to application.

4. EXPLANATION OF INDEX FORMAT AND COLUMNS (SECTION IV).

a. NATIONAL STOCK NUMBER (NSN) INDEX.

(1) STOCK NUMBER Column. This column lists the NSN in national item identification number (NIIN) sequence. The NIIN consists of the last nine digits of the NSN, i.e.

NSN
5305-01-574-1467
NIIN

When using this column to locate an item, ignore the first four digits of the NSN. Use the complete NSN (13 digits) when requisitioning items by stock number.

(2) FIG. Column. This column lists the number of the figure where the item is identified/located. The figures are in numerical order in Section II and Section III.

(3) ITEM Column. The item number identifies the item associated with the figure listed in the adjacent FIG. column. This item is also identified by the NSN listed on the same line.

b. PART NUMBER INDEX. Part numbers in this index are listed in ascending alphanumeric sequence (i. e., vertical arrangement of letter and number combinations which place the first letter or digit of each group in order A through Z, followed by the numbers 0 through 9, and each following letter or digit in like order).

(1) CAGEC Column. The Commercial and Government Entity Code (CAGEC) is a 5-digit numeric code used to identify the manufacturer, distributor, or Government agency/activity that supplies the item.

(2) PART NUMBER Column. Indicates the primary number used by the manufacturer (individual, firm, corporation, or Government activity), which controls the design and characteristics of the item by means of its engineering drawings, specifications, standards, and inspection requirements to identify an item or range of items.

(3) STOCK NUMBER Column. This column lists the NSN for the associated part number and manufacturer identified in the PART NUMBER and CAGEC columns to the left.

(4) FIG. Column. This column lists the number of the figure where the item is identified/located in Section II and Section III.

(5) ITEM Column. The item number is that number assigned to the item as it appears in the figure referenced in the adjacent figure number column.

c. FIGURE AND ITEM NUMBER INDEX.

(1) FIG. Column. This column lists the number of the figure where the item is identified/located in Section II and Section III.

(2) ITEM Column. The item number is that number assigned to the item as it appears in the figure referenced in the adjacent figure number column.

(3) STOCK NUMBER Column. This column lists the NSN for the item.

(4) CAGEC Column. The Commercial and Government Entity Code (CAGEC) is a 5-digit numeric code used to identify the manufacturer, distributor, or Government agency/activity that supplies the item.

(5) PART NUMBER Column. Indicates the primary number used by the manufacturer (individual, firm, corporation, or Government activity), which controls the design and characteristics of the item by means of its engineering drawings, specifications, standards, and inspection requirements to identify an item or range of items.

5. SPECIAL INFORMATION.

a. USABLE ON CODE. The usable on code appears in the lower left corner of the Description Column heading. Usable on codes are shown as "UOC:..." in the Description Column (justified left) on the last line of the applicable item description/nomenclature. Uncoded items are applicable to all models.

b. FABRICATION INSTRUCTIONS. Bulk materials required to manufacture items are listed in the Bulk Material Functional Group of this RPSTL. Part numbers for bulk materials are also referenced in the description column of the line item entry for the item to be manufactured/fabricated. Detailed fabrication instructions for items source coded to be manufactured or fabricated are found in TM 9-4120-398-14.

c. INDEX NUMBERS. Items which have the word BULK in the figure column will have an index number shown in the item number column. This index number is a cross-reference between the National Stock Number/Part Number Index and the bulk material list in Section II.

d. ASSOCIATED PUBLICATIONS. The publications listed below pertain to the Air Conditioner and its components.

<u>Publication</u>	<u>Short Title</u>
TM 9-4120-398-14	Air Conditioner, 54,000 BTU/Hour

6. HOW TO LOCATE REPAIR PARTS.

a. When National Stock Numbers or Part Numbers are NOT Known.

(1) First. Using the table of contents, determine the assembly or subassembly group to which the item belongs. This is necessary since figures are prepared for assembly groups and subassembly groups, and listings are divided into the same groups.

(2) Second. Find the figure covering the assembly group or subassembly group to which the item belongs.

(3) Third. Identify the item on the figure and use the Figure and Item Number Index to find the NSN.

b. When National Stock Number or Part Number is Known.

(1) First. Using the of National Stock Number and Part Number Indexes find the pertinent National Stock Number or Part Number. The NSN index is in National Item Identification Number (NIIN) sequence (see paragraph 4.a.). The part numbers in the Part Number index are listed in ascending alphanumeric sequence (see paragraph 4.b.). Both indexes cross-reference you to the illustration/figure and item number of the item you are looking for.

(2) Second. Turn to the figure and item number, verify that the item is the one you are looking for, then locate the item number in the repair parts list for the figure.

7. ABBREVIATIONS. Abbreviations used in this manual are listed in MIL-STD-12.

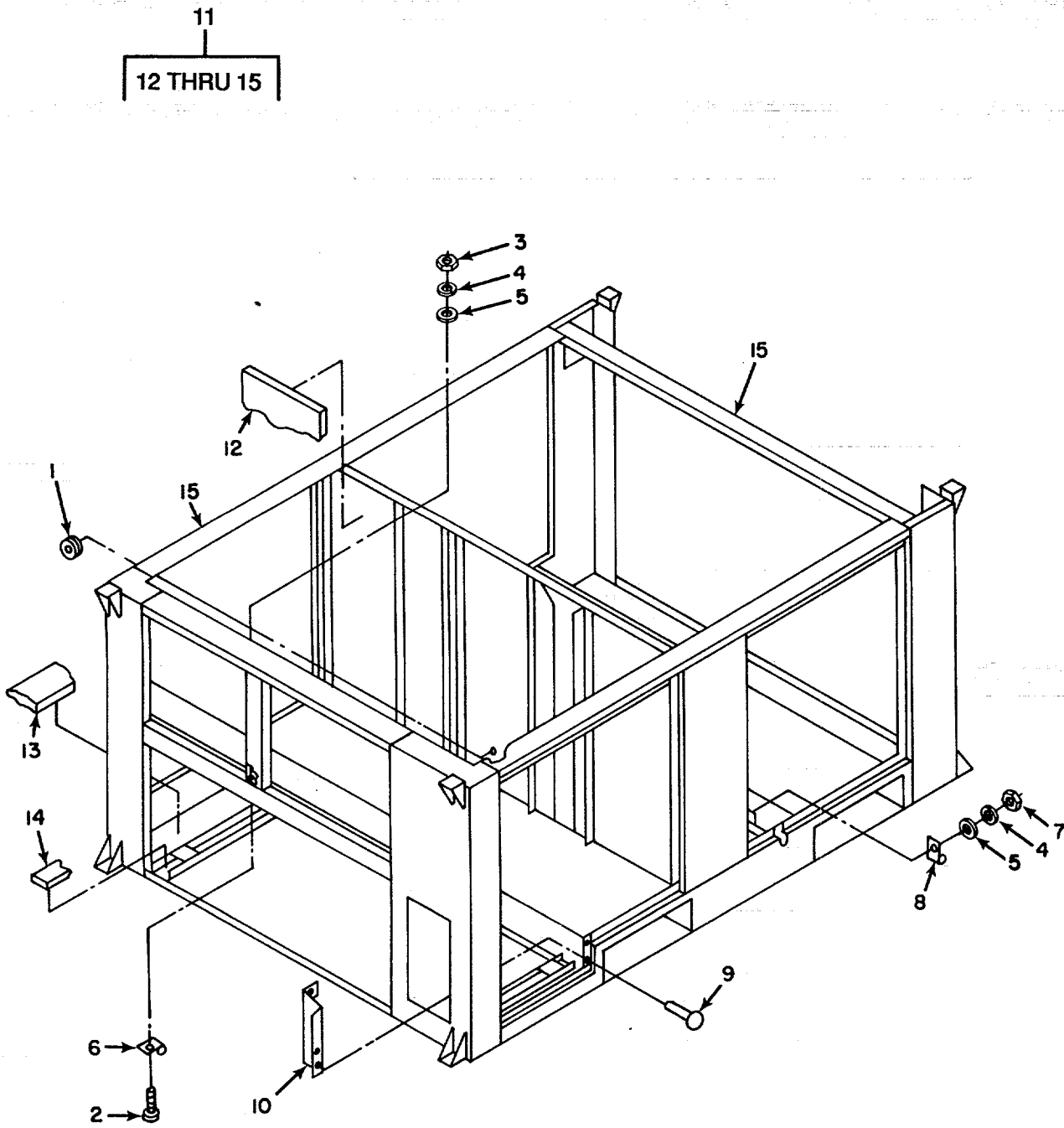


Figure 1. Frame

## SECTION II

TM 9-4120-398-24P

(1) ITEM NO	(2) SMR CODE	(3) CAGEC	(4) PART NUMBER	(5) DESCRIPTION AND USABLE ON CODES(UOC)	(6) QTY
<b>GROUP 01 FRAME ASSEMBLY</b>					
<b>FIG. 1 FRAME</b>					
1	PAFZZ	96906	MS35489-12	GROMMET, NONMETALLIC.....	2
2	PAFZZ	96906	MS35206-264	SCREW, MACHINE.....	2
3	PAFZZ	96906	MS35649-202	NUT, PLAIN, HEXAGON.....	2
4	PAFZZ	96906	MS35338-43	WASHER, LOCK.....	2
5	PAFZZ	96906	MS27183-8	WASHER, FLAT.....	2
6	PAFZZ	96906	MS21919WDG6	CLAMP, LOOP.....	2
7	PAFZZ	96906	MS35650-302	NUT, PLAIN, HEXAGON.....	2
8	PAFZZ	96906	MS21322-41	CLAMP, LOOP.....	2
9	PAOZZ	07707	SD42BS	RIVET, BLIND.....	2
10	XBFZZ	67302	12119-1	SUPPORT, VALVE.....	1
11	XBFHH	67302	12040-102	AIR COND, FRAME.....	1
12	MFFHH	81349	HH-I-558TYPE1-1IN	.INSULATION MAKE FROM P/N HH-I-558, 1 INCH THICK.....	V
13	MFFHH	81349	MIL-I-16562TYPEM -1IN	.INSULATION MAKE FROM P/N HH-I-558, 1 INCH THICK.....	V
14	MFFHH	81349	MIL-I-16562TYPEM -1/21N	.INSULATION MAKE FROM P/N HH-I-558, 1 INCH THICK.....	V
15	XBFHH	67302	12073-102	.FRAME, AIR COND.....	1

END OF FIGURE

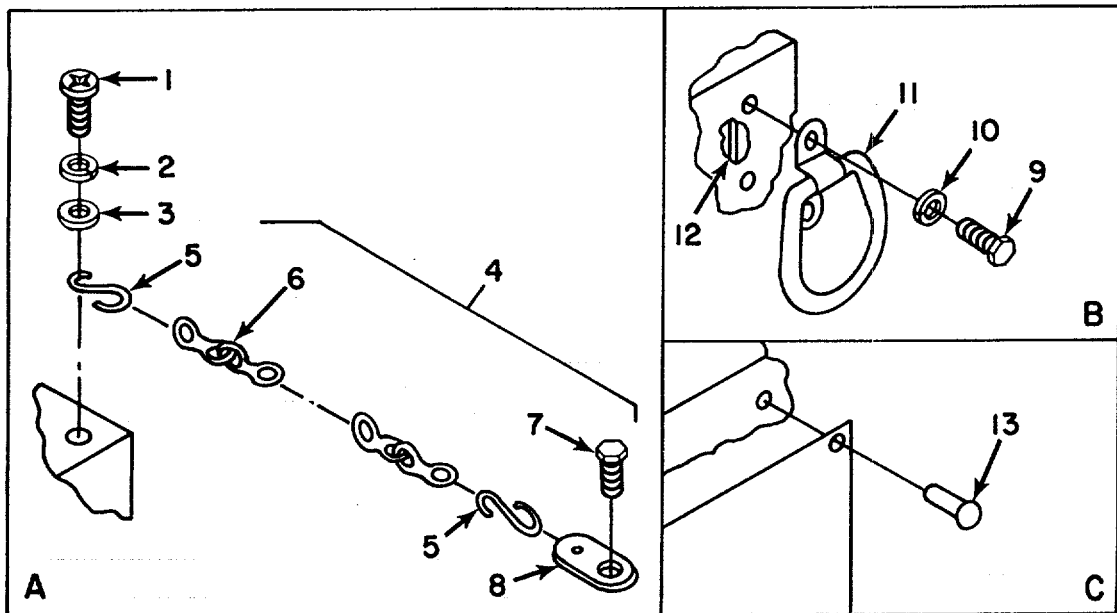
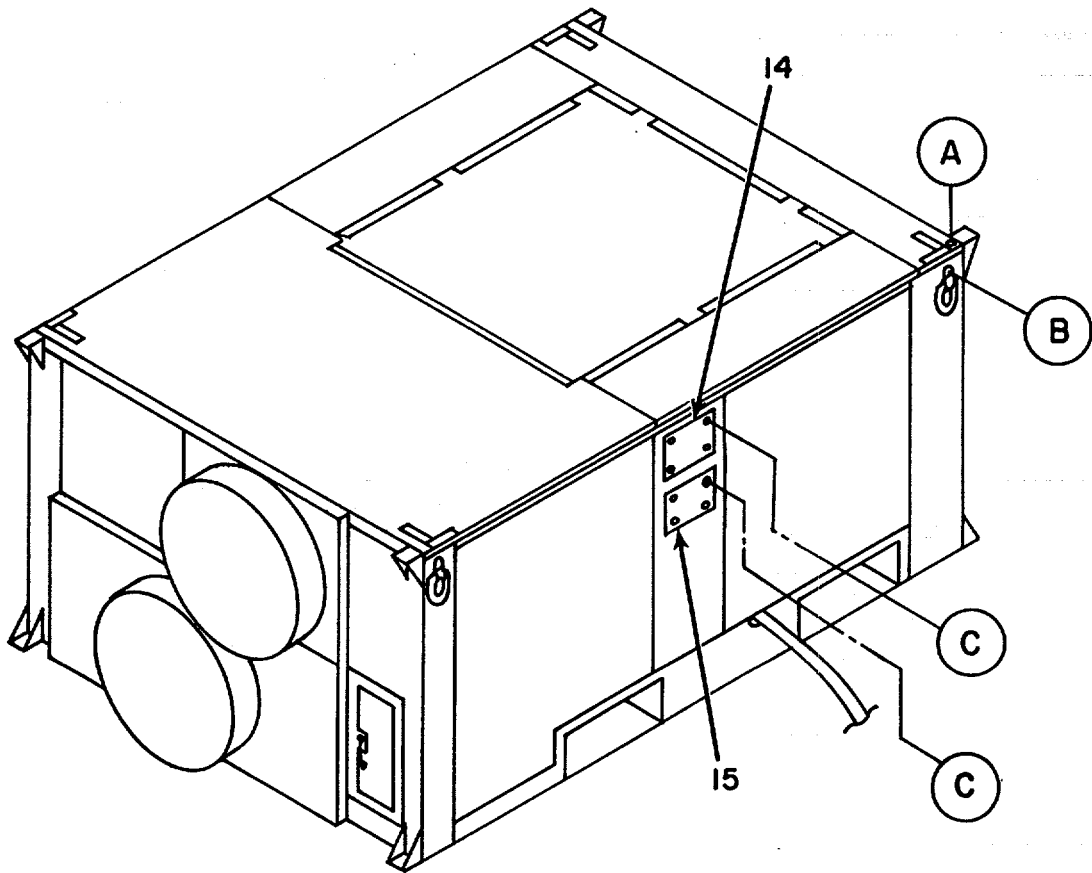


Figure 2. Information Plates

SECTION II

TM 9-4120-398-24P

(1) ITEM NO	(2) SMR CODE	(3) CAGEC	(4) PART NUMBER	(5) DESCRIPTION AND USABLE ON CODES(UOC)	(6) QTY
<b>GROUP 01 FRAME ASSEMBLY</b>					
<b>FIG. 2 INFORMATION PLATES</b>					
1	PBOZZ	96906	MS35206-263	SCREW, MACHINE.....	8
2	PBOZZ	96906	MS35338-43	WASHER, LOCK.....	8
3	PBOZZ	96906	MS27183-8	WASHER, FLAT.....	8
4	PBOZZ	67302	12075-101	BOLT, STACKING.....	8
5	PBOZZ	80205	NAS1090-2	.HOOK, CHAIN, S.....	8
6	PBOZZ	81349	RR-C-271	.CHAIN, WELDLESS.....	8
7	PBOZZ	96906	MS90728-159	.SCREW, CAP, HEXAGON H.....	8
8	PBOZZ	67302	12075-6	.PLATE, FLAT.....	8
9	PBOZZ	96906	MS90725-34	BOLT, MACHINE.....	8
10	PBOZZ	96906	MS35338-45	WASHER, LOCK.....	8
11	PBOZZ	98313	FDK-2850M1	HANDLE, BAIL.....	4
12	PBOZZ	76871	SN2716	NUT, PLAIN, PLATE.....	8
13	PAOZZ	07707	SD42BS	RIVET, BLIND.....	8
14	XBOZZ	67302	12041-6	PLATE, IDENT.....	1
15	MFFZZ	97403	13229E7158	PLATE, IDENT, MOD MAKE FROM P/N MIL- P-514.....	1

END OF FIGURE



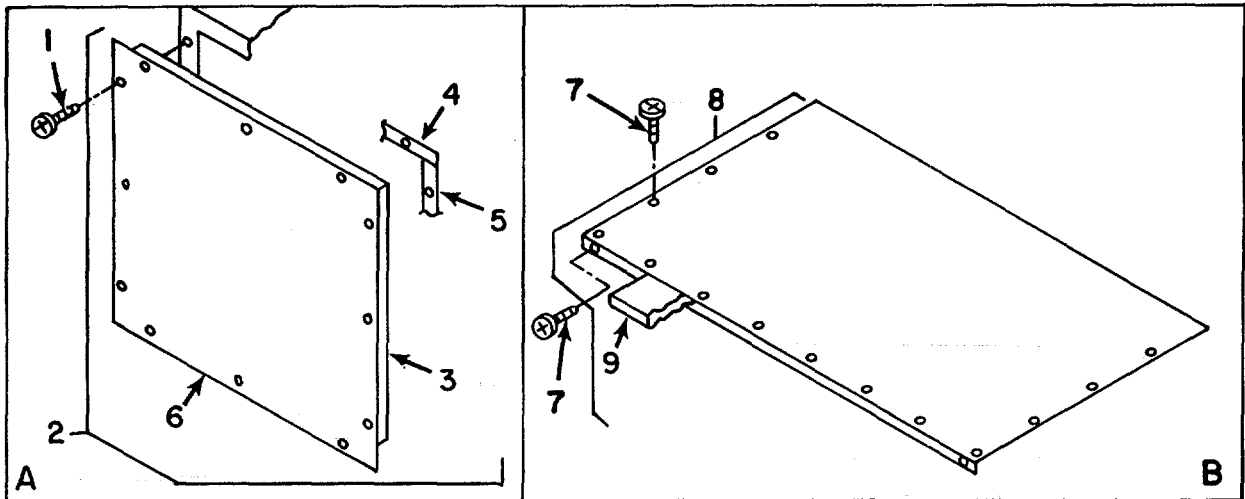
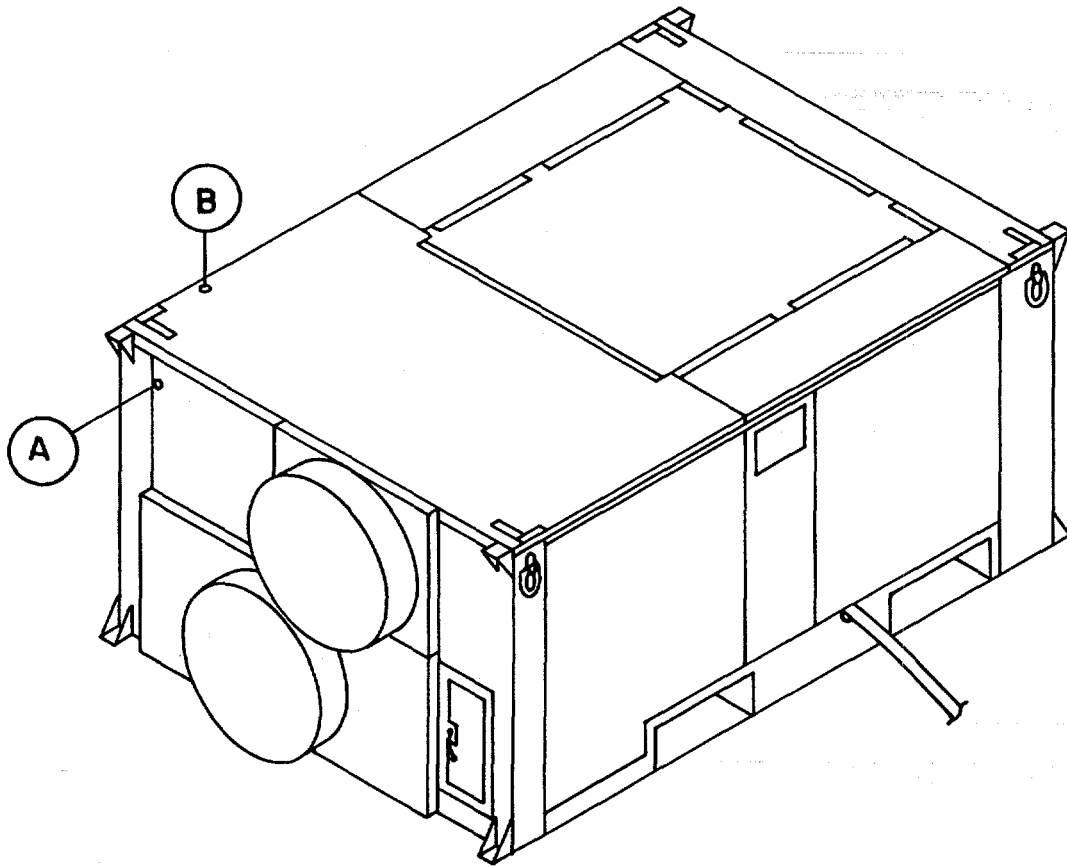


Figure 3. Front and Front Top Cover Installation

SECTION II

TM 9-4120-398-24P

(1) ITEM NO	(2) SMR CODE	(3) CAGEC	(4) PART NUMBER	(5) DESCRIPTION AND USABLE ON CODES(UOC)	(6) QTY
<b>GROUP 02 HOUSING COVERS, PANELS, GRILLES, DOORS, SCREENS</b>					
<b>FIG. 3 FRONT AND FRONT TOP COVER INSTALLATION</b>					
1	PAOZZ	96906	MS35206-264	SCREW, MACHINE.....	12
2	XBOZZ	67302	12055-100	PANEL ASSY.....	1
3	MFFZZ	67302	12055-2	.INSULATION MAKE FROM HH-I-558, 1.....	1
				INCH THICK.....	
4	MFFZZ	67302	12055-4	.GASKET MAKE FROM P/N MIL-R-6130, .....	2
				1/2 X 1/8 X 15.88 INCHES.....	
5	MFFZZ	67302	12055-5	.GASKET MAKE FROM P/N MIL-R-6130, .....	2
				1/2 X 1/8 X 14.69 INCHES.	
6	XBFZZ	67302	12055-1	.PANEL .....	1
7	PAOZZ	78189	TEKS-0608KW	SCREW, SELF THREAD.....	26
8	XBOZZ	67302	12064-100	PANEL .....	1
9	MFFZZ	67302	12064-2	.INSULATION MAKE FROM P/N HH-I-558, .....	1
				1 INCH THICK.....	

END OF FIGURE

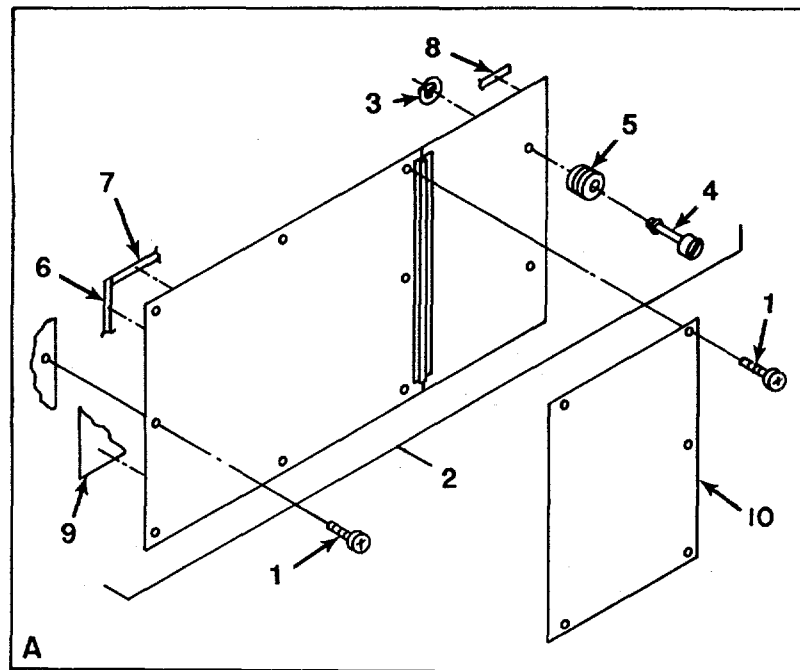
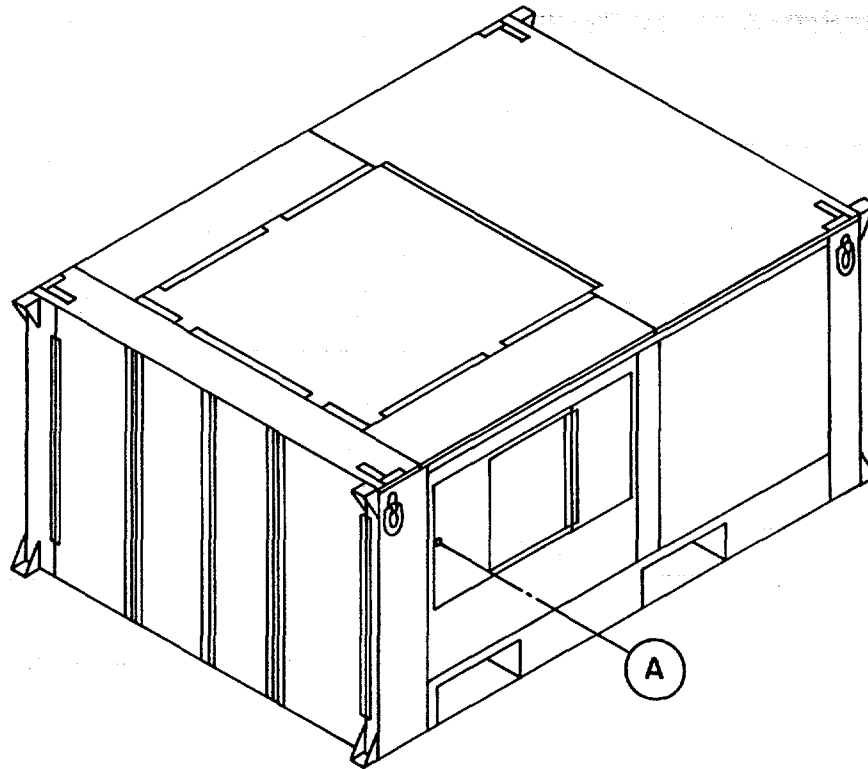


Figure 4. Control Panel Cover Installation

SECTION II

TM 9-4120-398-24P

(1) ITEM NO	(2) SMR CODE	(3) CAGEC	(4) PART NUMBER	(5) DESCRIPTION AND USABLE ON CODES(UOC)	(6) QTY
<b>GROUP 02 HOUSING COVERS, PANELS, GRILLES, DOORS, SCREENS</b>					
<b>FIG. 4 CONTROL PANEL COVER INSTALLATION</b>					
1	PAOZZ	96906	MS35206-263	SCREW, MACHINE.....	8
2	XBOZZ	67302	12052-103	COVER, CONTROL PANEL.....	1
3	XBOZZ	71286	40626-1	.RING, SNAP.....	2
4	PBOZZ	71286	4002-8S	.STUD ASSEMBLY, TURNL.....	2
5	XBOZZ	71286	4002-NS	.EYELET, TURNLOCK FAS.....	2
6	MFFZZ	67302	12052-4	.GASKET MAKE FROM P/N MIL-R-6130,..... 1/2 X 1/8 INCH.	2
7	MFFZZ	67302	12052-9	.GASKET MAKE FROM P/N MIL-R-6130,..... 1/2 X 1/8 INCH.....	2
8	MFFZZ	67302	12052-10	.GASKET MAKE FROM P/N MIL-R-6130,..... 1/2 X 1/8 INCH.	2
9	XBOZZ	67302	12097-4	.PLATE, INSTRUCTION.....	1
10	XBOZZ	67302	12098-4	PLATE, INSTRUCTION.....	1

END OF FIGURE

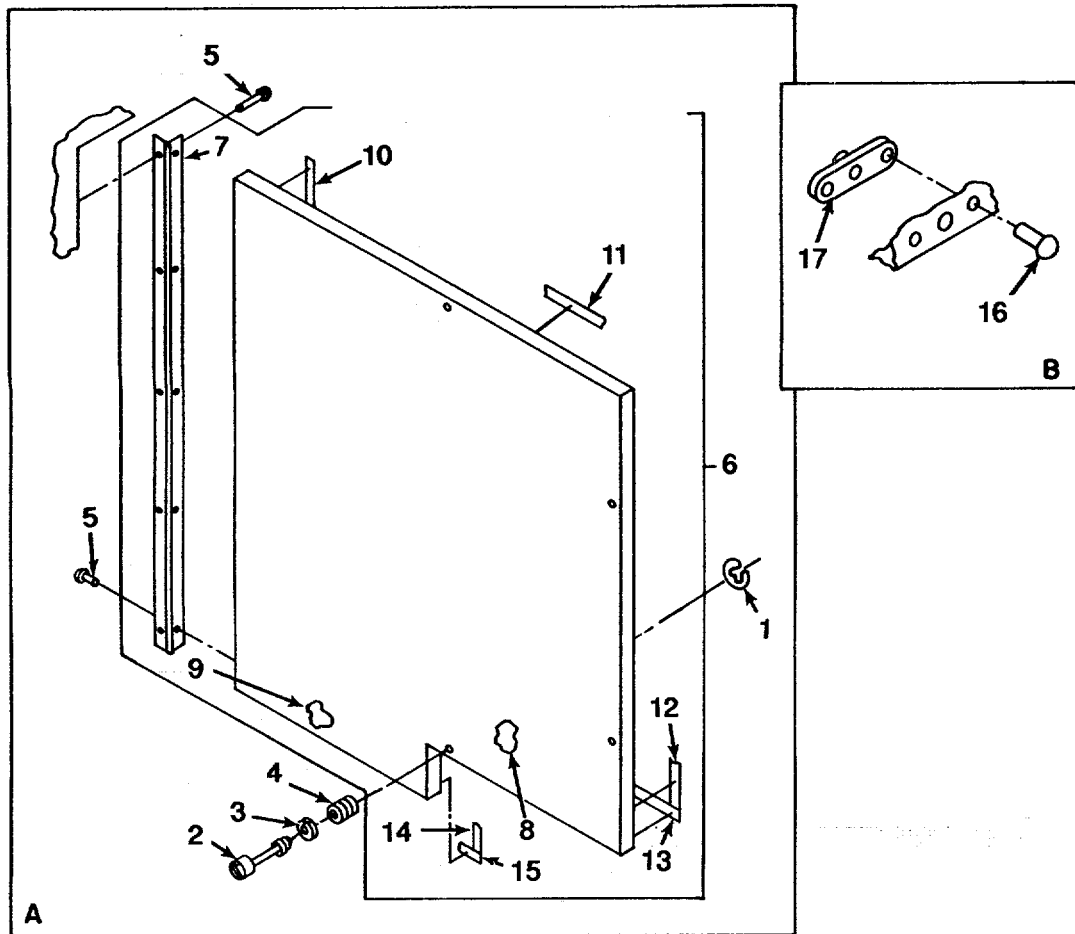
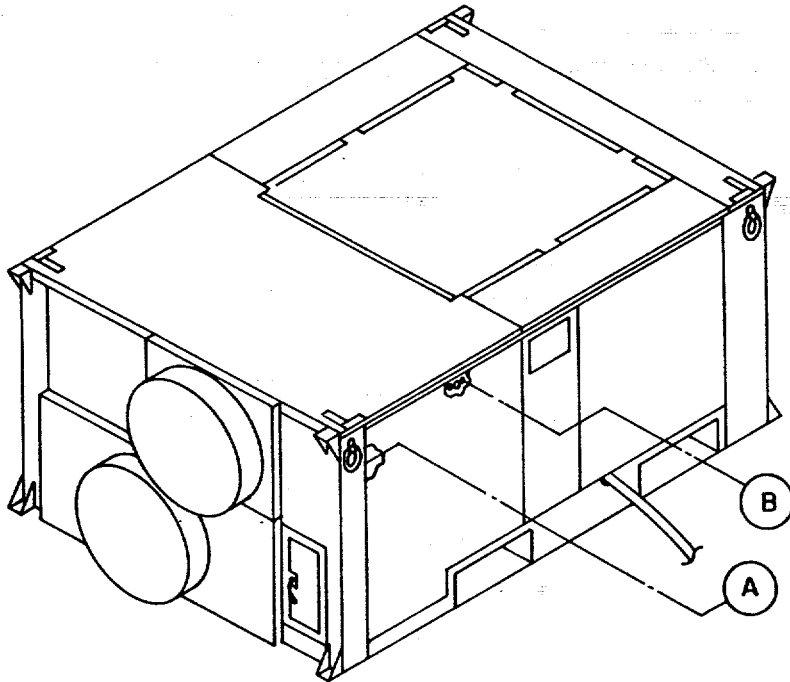


Figure 5. Left Access Door Installation

## SECTION II

TM 9-4120-398-24P

(1) ITEM NO	(2) SMR CODE	(3) CAGEC	(4) PART NUMBER	(5) DESCRIPTION AND USABLE ON CODES(UOC)	(6) QTY
<b>GROUP 02 HOUSING COVERS, PANELS, GRILLES, DOORS, SCREENS</b>					
<b>FIG. 5 LEFT ACCESS DOOR INSTALLATION</b>					
1	PBOZZ	71286	40G26-1	RING, RETAINING .....	4
2	XDOZZ	71286	4002-28S	STUD ASSEMBLY, TURNL.....	4
3	PBOZZ	71286	4002-SW-SS	WASHER, SPLIT.....	4
4	PBOZZ	71286	4002-NS	EYELET, TURNLOCK FAS .....	4
5	PAOZZ	07707	SD62BS	RIVET, BLIND .....	10
6	XBOZZ	67302	12016-100	DOOR .....	1
7	XAFZZ	96906	MS20257C2-2300	.HINGE, BUTT.....	1
8	MFFZZ	67302	12016-7	.INSULATION MAKE FROM P/N MIL-I..... 16562, 1/2 INCH THICK .....	1
9	MFFZZ	67302	12016-8	.INSULATION MAKE FROM P/N MIL-I..... 16562, 1/2 INCH THICK .....	1
10	MFFZZ	67302	12016-18	.GASKET..... MAKE FROM P/N MIL-R-6130, 1/2 INCH X 1/8 INCH.....	1
11	MFFZZ	67302	12016-17	.GASKET..... MAKE FROM P/N MIL-R-6130, 1/2 INCH X 1/8 INCH.....	1
12	MFFZZ	67302	12016-19	.GASKET..... MAKE FROM P/N MIL-R-6130, 1/2 INCH X 1/8 INCH.....	1
13	MFFZZ	67302	12016-15	.GASKET..... MAKE FROM P/N MIL-R-6130, 1/2 INCH X 1/8 INCH.....	1
14	MFFZZ	67302	12016-16	.GASKET..... MAKE FROM P/N MIL-R-6130, 1/2 INCH X 1/8 INCH.....	1
15	MFFZZ	67302	12016-14	.GASKET..... MAKE FROM P/N MIL-R-6130, 1/2 INCH X 1/8 INCH.....	1
16	PAOZZ	07707	SD42BS	RIVET, BLIND .....	8
17	XBOZZ	71286	244-16	RECEPTACLE, TURNLOCK .....	4

END OF FIGURE

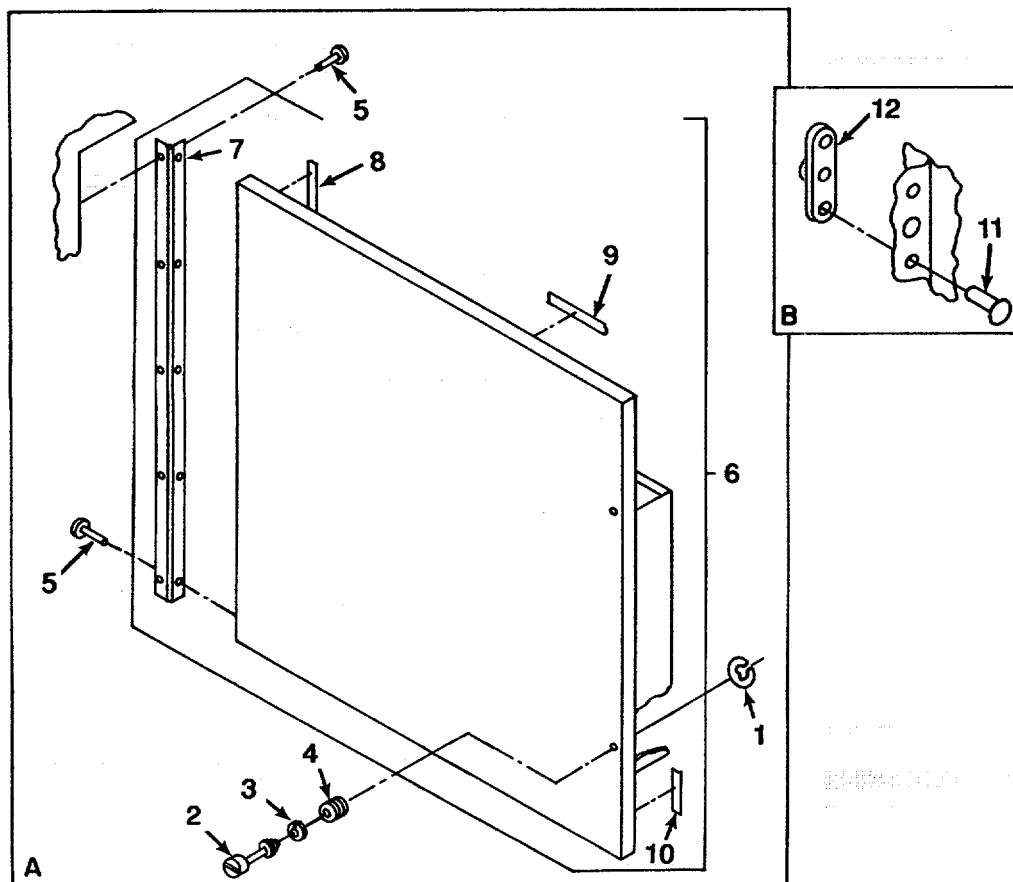
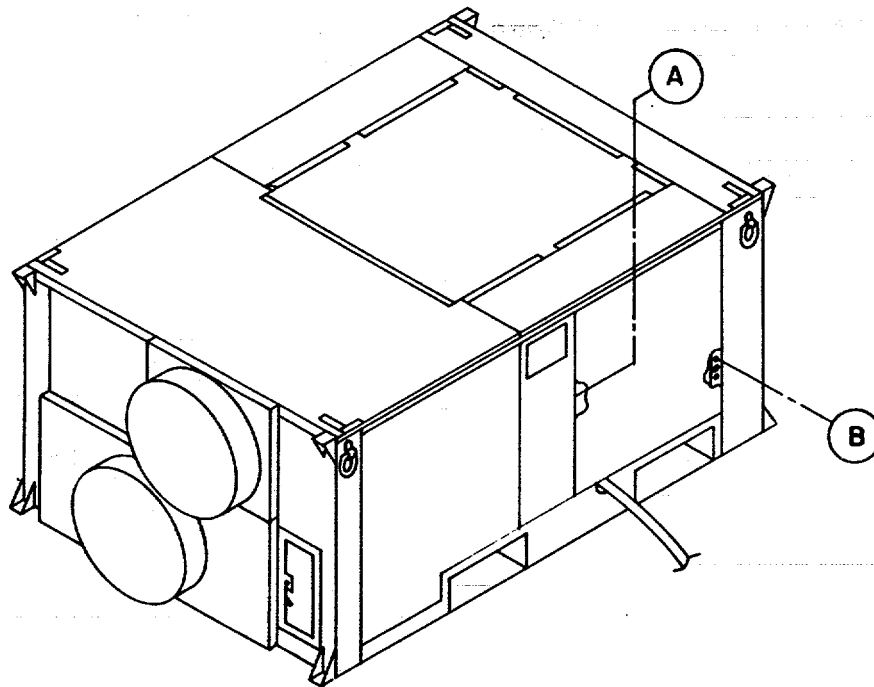


Figure 6. Right Access Door Installation

## SECTION II

TM 9-4120-398-24P

(1) ITEM NO	(2) SMR CODE	(3) CAGEC	(4) PART NUMBER	(5) DESCRIPTION AND USABLE ON CODES(UOC)	(6) QTY
<b>GROUP 02 HOUSING COVERS, PANELS, GRILLES, DOORS, SCREENS</b>					
<b>FIG. 6 RIGHT ACCESS DOOR INSTALLATION</b>					
1	PBOZZ	71286	40G26-1	RING, RETAINING .....	2
2	XDOZZ	71286	4002-28S	STUD ASSEMBLY, TURNL.....	2
3	PBOZZ	71286	4002-SW-SS	WASHER, SPLIT.....	2
4	PBOZZ	71286	4002-NS	EYELET, TURNLOCK FAS .....	2
5	PAOZZ	07707	SD62BS	RIVET, BLIND .....	10
6	XBOZZ	67302	12015-101	PANEL .....	1
7	XAFZZ	96906	MS20257-C2-2300	.HINGE, BUTT.....	1
8	MFFZZ	67302	12015-11	.GASKET MAKE FROM P/N MIL-R-6130, .....	1
				1/2 INCH X 1/8 INCH.....	
9	MFFZZ	67302	12015-4	.GASKET MAKE FROM P/N MIL-R-6130, .....	2
				1/2 INCH X 1/8 INCH.....	
10	MFFZZ	67302	12015-10	.GASKET MAKE FROM P/N MIL-R-6130, .....	1
				1/2 INCH X 1/8 INCH.....	
11	PAOZZ	07707	SD42BS	RIVET, BLIND .....	4
12	XBOZZ	71286	244-16	RECEPTACLE, TURNLOCK .....	2

END OF FIGURE



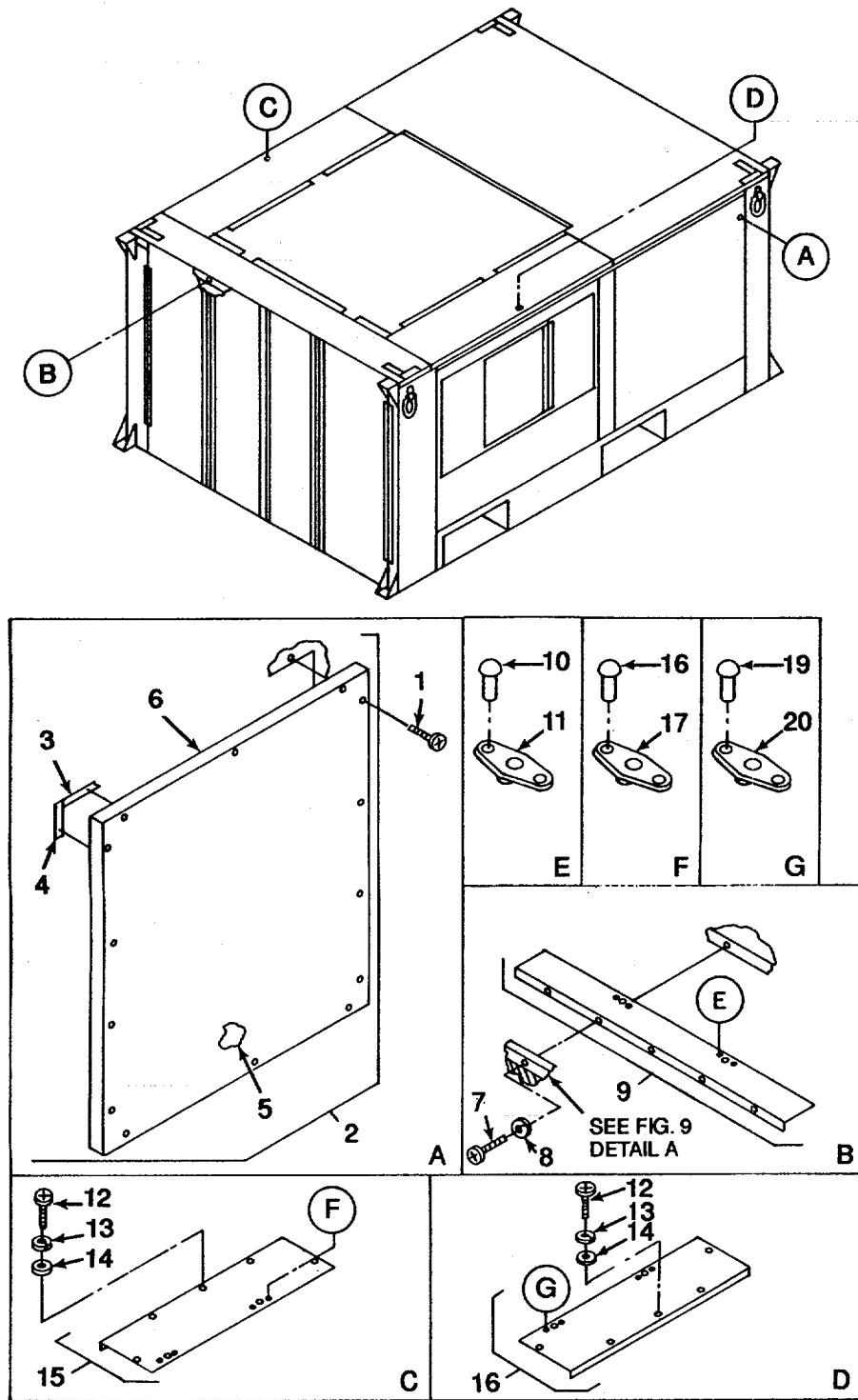


Figure 7. RH Panel and Top Panels Installation

## SECTION II

TM 9-4120-398-24P

(1) ITEM NO	(2) SMR CODE	(3) CAGEC	(4) PART NUMBER	(5) DESCRIPTION AND USABLE ON CODES(UOC)	(6) QTY
<b>GROUP 02 HOUSING COVERS, PANELS, GRILLES, DOORS, SCREENS</b>					
<b>FIG. 7 RH PANEL AND TOP PANELS INSTALLATION</b>					
1	PAOZZ	96906	MS35206-267	SCREW, MACHINE.....	14,
2	XBOZZ	67302	12045-100	DOOR .....	1
3	MFFZZ	67302	12045-4	.GASKET MAKE FROM P/N MIL-R-6130, .....	2
				1/2 INCH X 1/8 INCH.....	
4	MFFZZ	67302	12045-3	.GASKET MAKE FROM P/N MIL-R-6130, .....	2
				1/2 INCH X 1/8 INCH.....	
5	MFFZZ	67302	12045-2	.INSULATION MAKE FROM P/N HH-I-558,.....	V
				1 INCH THICK.....	
6	XBFZZ	67302	12045-1	.PANEL. ....	1
7	PAOZZ	96906	MS35206-280	SCREW, MACHINE.....	18
8	PAOZZ	96906	MS35338-44	WASHER, LOCK.....	18
9	XBOZZ	67302	12070-101	PANEL, TOP, REAR .....	1
10	PAOZZ	07707	SD42BS	.RIVET, BLIND .....	4
11	XBOZZ	71286	244-16C	.RECEPTACLE, TURNLOCK .....	2
12	PAOZZ	96906	MS35206-263	.SCREW, MACHINE.....	10
13	PAOZZ	96906	MS35338-43	WASHER, LOCK.....	10
14	PAOZZ	96906	MS27183-8	WASHER, FLAT.....	10
15	XBOZZ	67302	12043-101	PANEL, TOP, LEFT.....	1
16	PAOZZ	07707	SD42BS	.RIVET, BLIND .....	4
17	XBOZZ	71286	244-16C	.RECEPTACLE, TURNLOCK .....	2
18	XBOZZ	67302	12047-101	PANEL, TOP, RIGHT .....	1
19	PAOZZ	07707	SD42BS	.RIVET, BLIND .....	4
20	XBOZZ	71286	244-16C	.RECEPTACLE, TURNLOCK .....	2

END OF FIGURE

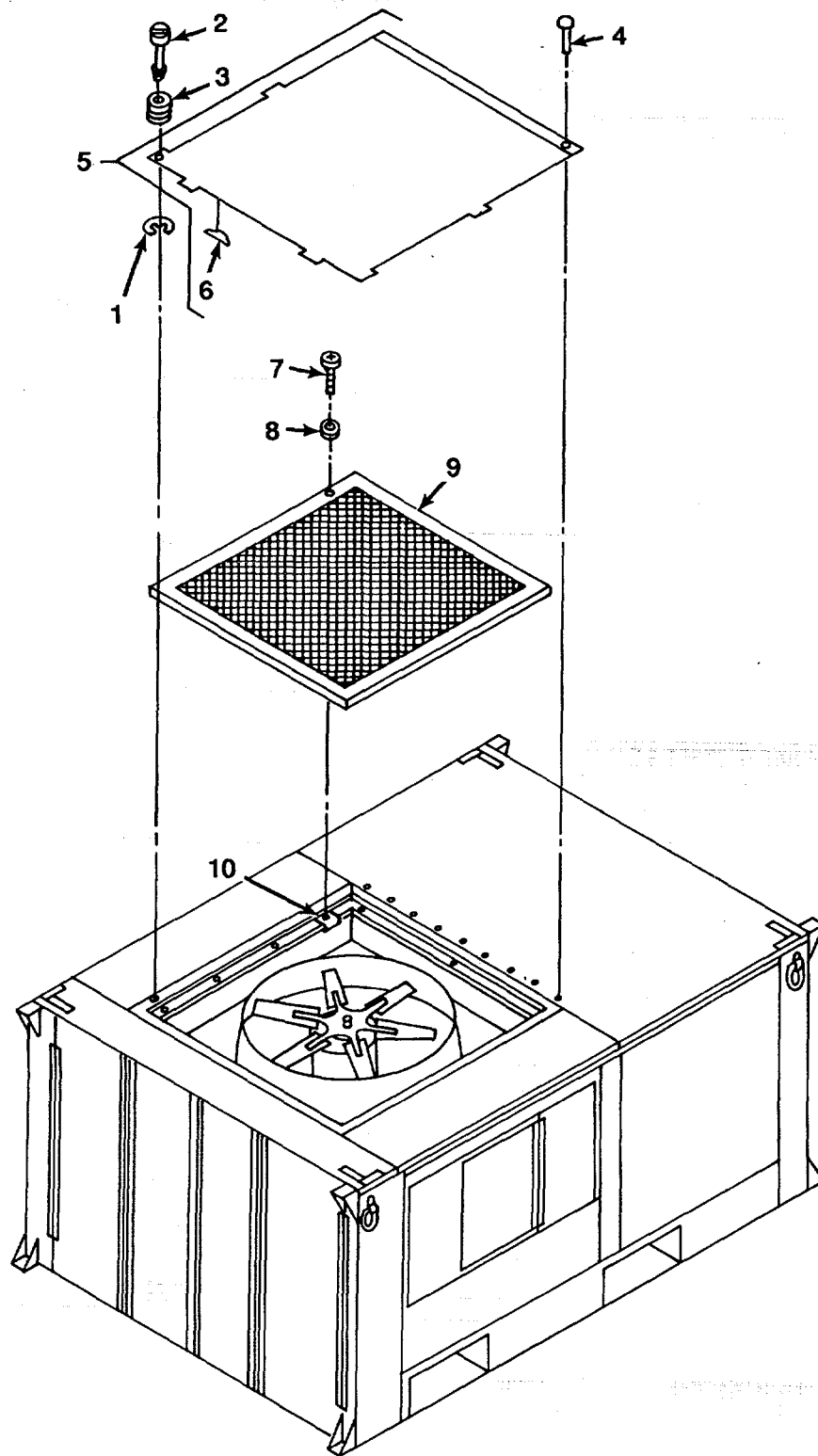


Figure 8. Condenser Grille and Cover Installation

SECTION II

TM 9-4120-398-24P

(1) ITEM NO	(2) SMR CODE	(3) CAGEC	(4) PART NUMBER	(5) DESCRIPTION AND USABLE ON CODES(UOC)	(6) QTY
<b>GROUP 02 HOUSING COVERS, PANELS, GRILLES, DOORS, SCREENS</b>					
<b>FIG. 8 CONDENSER GRILLE AND COVER INSTALLATION</b>					
1	PBOZZ	71286	40626-1	RING, SNAP.....	6
2	PBOZZ	71286	4002-8S	STUD ASSEMBLY, TURNL.....	6
3	PBOZZ	71286	4002-NS	EYELET, TURNLOCK FAS .....	6
4	PAOZZ	07707	SD42BS	RIVET, BLIND .....	9
5	XBOZZ	67302	12135-100	COVER, HINGED.....	1
6	MFFZZ	67302	12135-10	.GASKET MAKE FROM P/N MIL-R-6130, .....	1
				3/8 INCH X 1/8 INCH	
7	PAOZZ	96906	MS51861-47	SCREW, TAPPING. ....	10
8	PAOZZ	96906	MS27183-8	WAS HER, FLAT.....	10
9	XBOZZ	67302	12018-100	GRILLE, CONDENSER .....	1
10	PAOZZ	78553	C9030-102-1	NUT, SPEED.....	10

END OF FIGURE

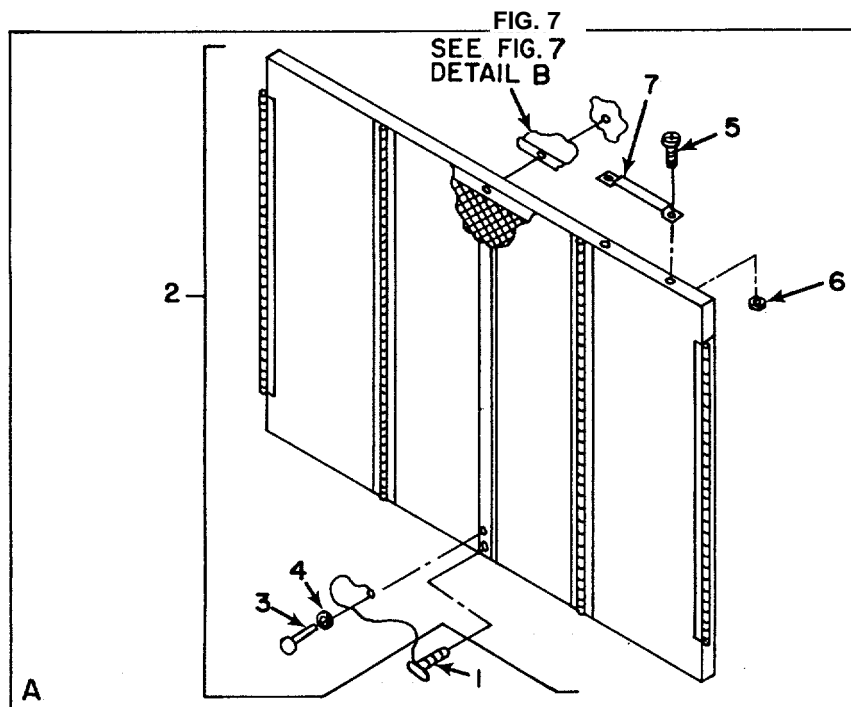
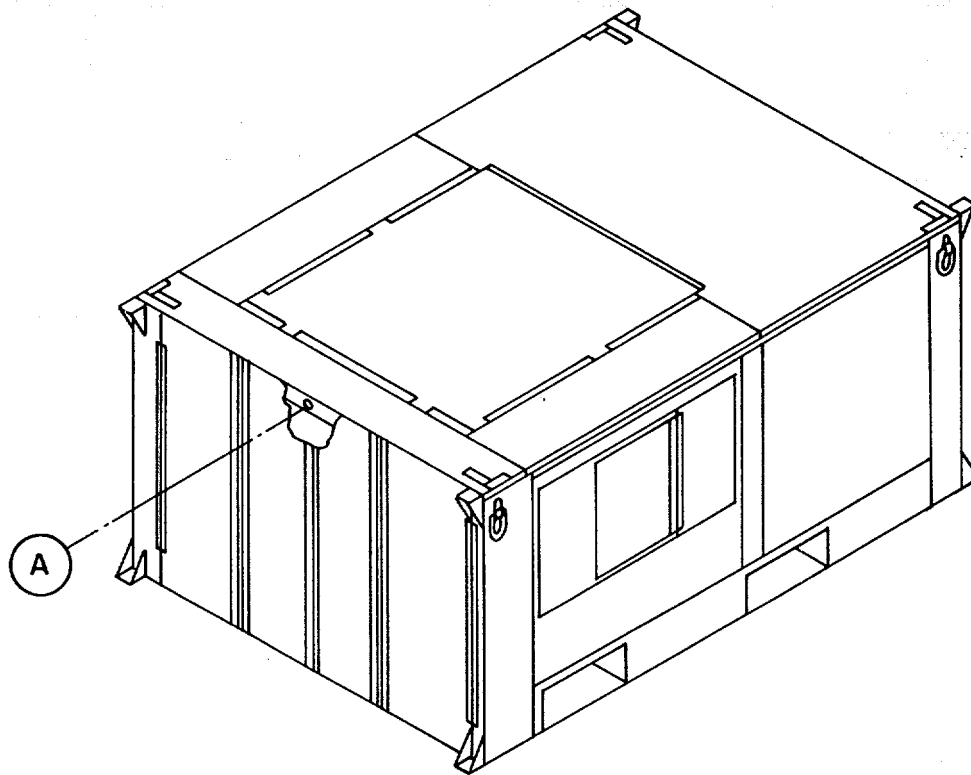


Figure 9. Rear Grille and Cover Installation

SECTION II

TM 9-4120-398-24P

(1) ITEM NO	(2) SMR CODE	(3) CAGEC	(4) PART NUMBER	(5) DESCRIPTION AND USABLE ON CODES(UOC)	(6) QTY
<b>GROUP 02 HOUSING COVERS, PANELS, GRILLES, DOORS, SCREENS</b>					
<b>FIG. 9 REAR GRILLE AND COVER INSTALLATION</b>					
1	PBOZZ	67302	1408TS	SCREW, WING, CAPTIVE .....	4
2	XBOZZ	67302	12134-100	COVER, GRILL ASSY .....	1
3	PAOZZ	07707	SD43BS	.RIVET, BLIND .....	4
4	PAOZZ	96906	MS27183-5	.WASHER, FLAT .....	4
5	PAOZZ	96906	MS35206-245	.SCREW, MACHINE .....	4
6	PAOZZ	96906	MS21044-NO8	.NUT, SELF-LOCKING, HE .....	4
7	PAOZZ	67302	12136-100	.POSITIONER, DOOR.....	2

END OF FIGURE

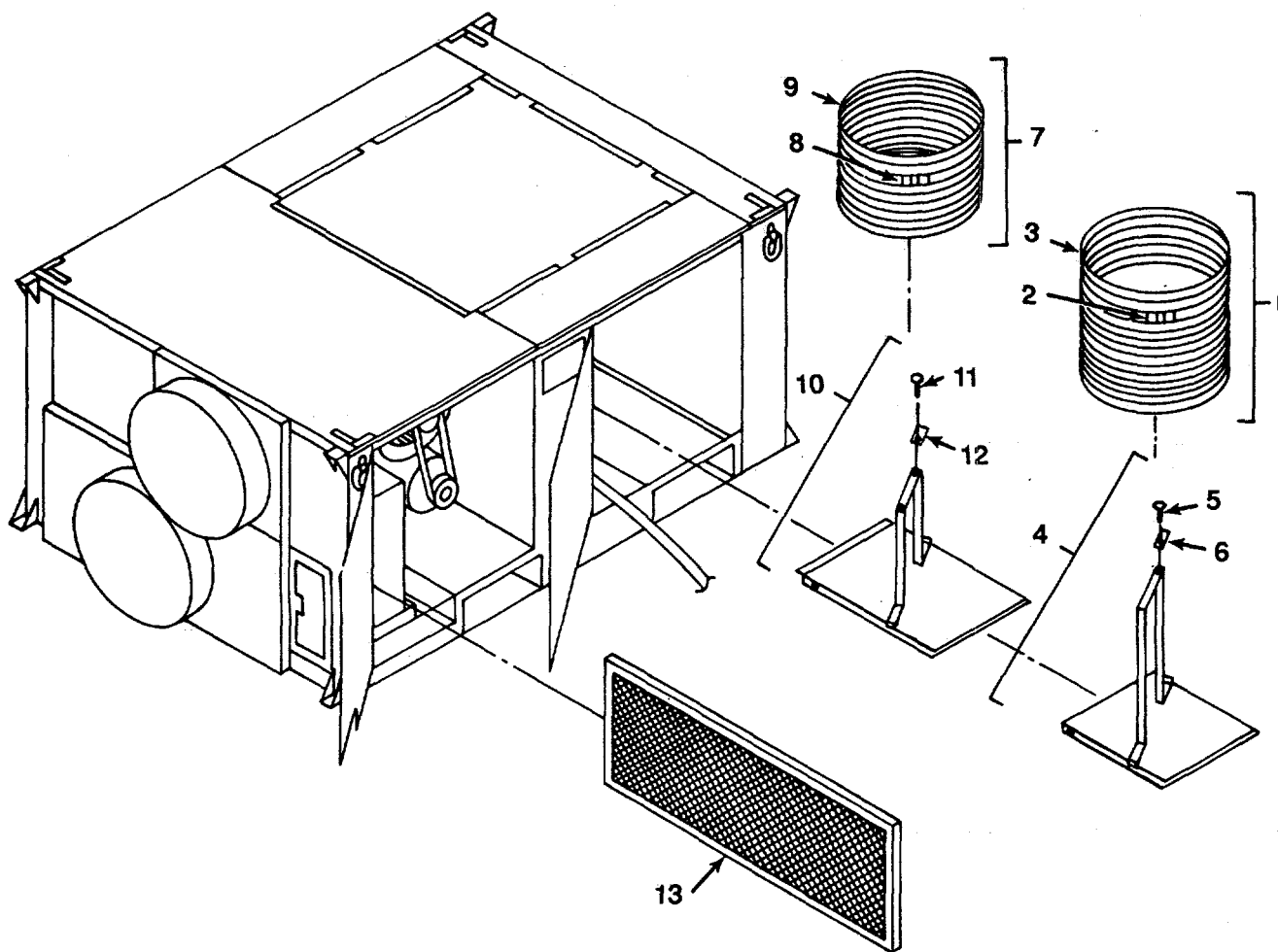


Figure 10. Air Filter and Duct Installation

SECTION II

TM 9-4120-398-24P

(1) ITEM NO	(2) SMR CODE	(3) CAGEC	(4) PART NUMBER	(5) DESCRIPTION AND USABLE ON CODES(UOC)	(6) QTY
<b>GROUP 03 AIR CIRCULATING AND CONDENSATE DRAIN SYSTEM</b>					
<b>FIG. 10 AIR FILTER AND DUCT INSTALLATION</b>					
1	PAOZZ	67302	12006-101	HOSE,AIR DUCT .....	1
2	PBOZZ	66295	C256-FS	.CLAMP .....	1
3	XDOZZ	16632	FLX1501-0004	.DUCT,FLEXIBLE .....	1
4	PBOZZ	67302	12089-100	RACK,DUCT .....	1
5	PBOZZ	96906	MS20613-8PG	.RIVET,SOLID .....	2
6	PBOZZ	67302	12089-3	.LATCH .....	2
7	PAOZZ	67302	12006-100	HOSE,AIR DUCT .....	1
8	PBOZZ	66295	C256-FS	.CLAMP .....	1
9	XDFZZ	16632	FLX1501-0003	.DUCT,FLEXIBLE .....	1
10	PBOZZ	67302	12088-100	RACK,DUCT .....	1
11	PAOZZ	96906	MS20613-8PG	.RIVET,SOLID .....	2
12	PBOZZ	67302	12088-3	.LATCH .....	2
13	PAOZZ	67302	12118-1	FILTERING ROLL,AIR.....	1

END OF FIGURE



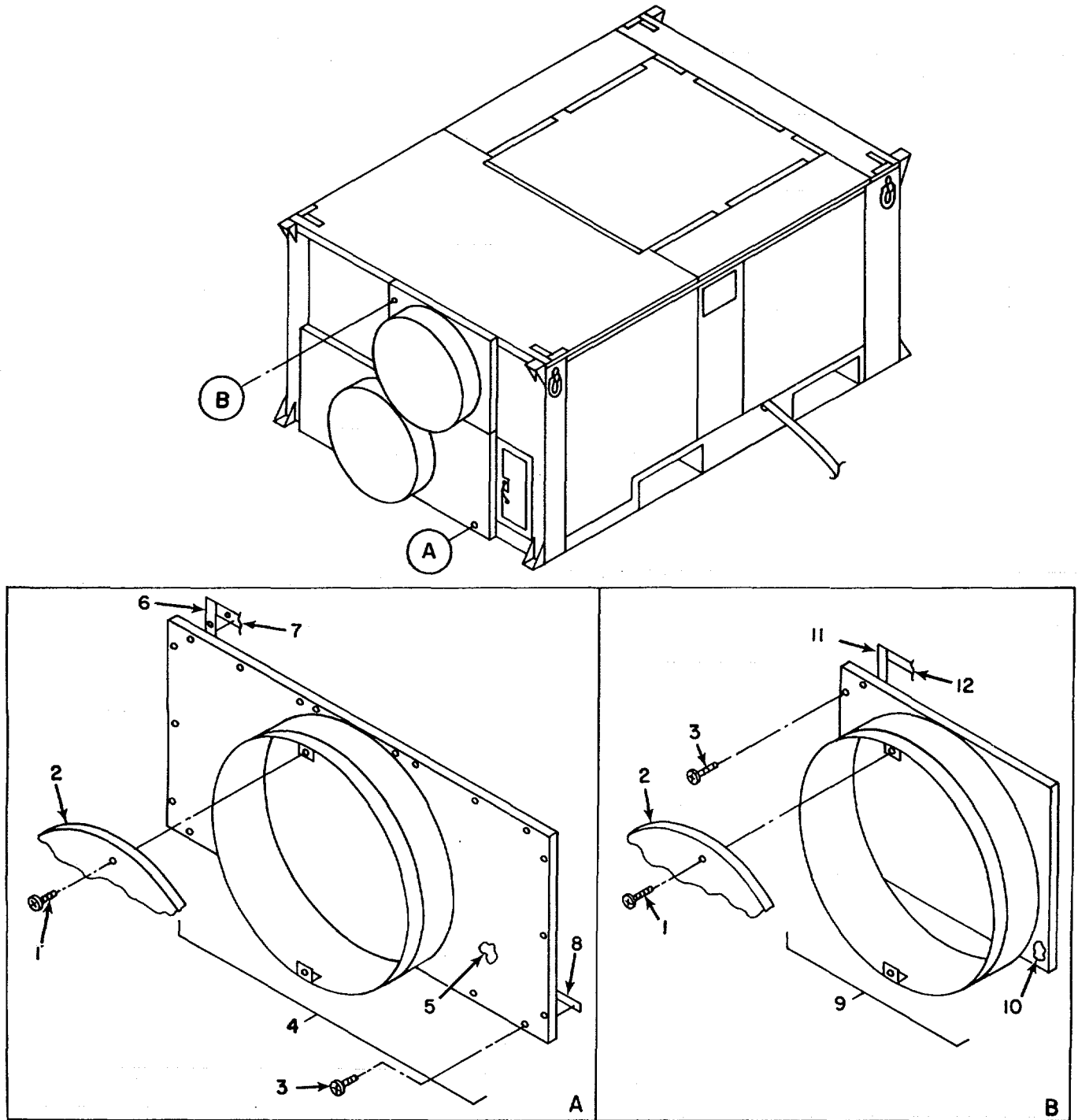


Figure 11. Adapter Duct Installation

## SECTION II

TM 9-4120-398-24P

(1) ITEM NO	(2) SMR CODE	(3) CAGEC	(4) PART NUMBER	(5) DESCRIPTION AND USABLE ON CODES(UOC)	(6) QTY
<b>GROUP 03 AIR CIRCULATING AND CONDENSATE DRAIN SYSTEM</b>					
<b>FIG. 11 ADAPTER DUCT INSTALLATION</b>					
1	PAOZZ	96906	MS35207-263	SCREW, MACHINE.....	4
2	PAOZZ	67302	12057-1	COVER, DUST.....	2
3	PAOZZ	96906	MS35206-267	SCREW, MACHINE.....	34
4	PBOZZ	67302	12056-100	ADAPTER, DUCT INLET.....	1
5	MFFZZ	67302	12056-4	.INSULATION MAKE FROM P/N HH-I-558, 1 INCH THICK.....	1
6	MFFZZ	67302	12056-8	.GASKET MAKE FROM P/N MIL-R-6130, 1/2 INCH X 1/8 INCH.....	2
7	MFFZZ	67302	12056-9	.GASKET MAKE FROM P/N MIL-R-6130, 1/2 INCH X 1/8 INCH.....	1
8	MFFZZ	67302	12056-7	.GASKET MAKE FROM P/N MIL-R-6130, 1/2 INCH X 1/8 INCH.....	1
9	PBOZZ	67302	12058-100	ADAPTER, DUCT DISCHA.....	1
10	MFFZZ	67302	12058-4	.INSULATION MAKE FROM P/N MIL-I- 16562, 1/2 INCH THICK.....	1
11	MFFZZ	67302	12058-7	.GASKET MAKE FROM P/N MIL-R-6130, 1/2 INCH X 1/8 INCH.....	2
12	MFFZZ	67302	12058-9	.GASKET MAKE FROM P/N MIL-R-6130, 1/2 INCH X 1/8 INCH.....	2

END OF FIGURE

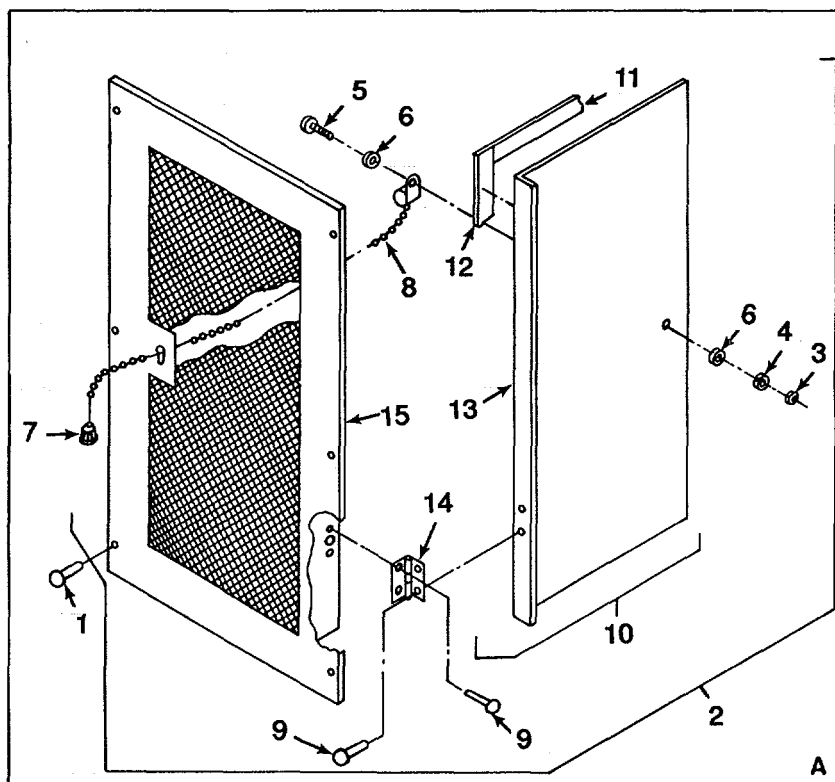
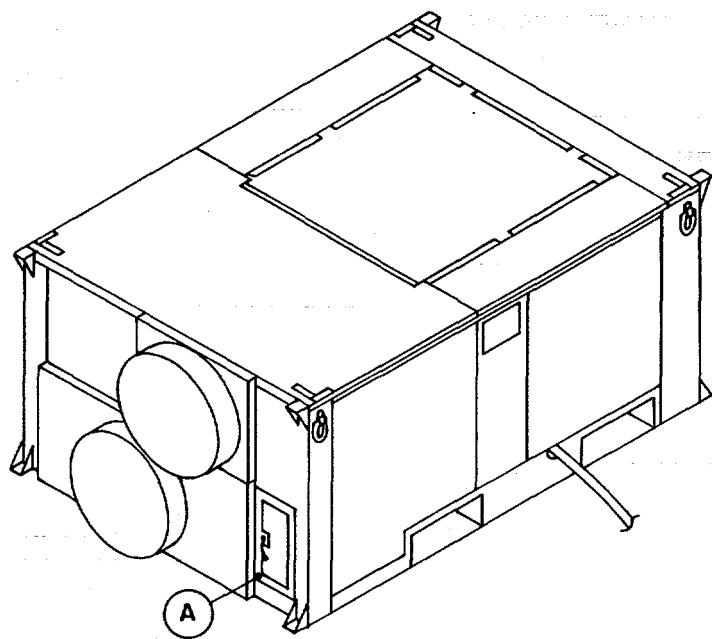


Figure 12. Fresh Air Damper Installation

## SECTION II

TM 9-4120-398-24P

(1) ITEM NO	(2) SMR CODE	(3) CAGEC	(4) PART NUMBER	(5) DESCRIPTION AND USABLE ON CODES(UOC)	(6) QTY
<b>GROUP 03 AIR CIRCULATING AND CONDENSATE DRAIN SYSTEM</b>					
<b>FIG. 12 FRESH AIR DAMPER INSTALLATION</b>					
1	PAOZZ	07707	SD42BS	RIVET, BLIND .....	6
2	PBOZZ	67302	12001-100	DAMPER, FRESH AIR .....	1
3	PAOZZ	96906	MS35649-202	NUT, PLAIN, HEXAGON .....	1
4	PAOZZ	96906	MS35338-43	WASHER, LOCK.....	1
5	PAOZZ	96906	MS35206-263	SCREW, MACHINE.....	1
6	PAOZZ	96906	MS27183-8	WASHER, FLAT.....	2
7	PAOZZ	97403	13211E8305	PENDANT WITH SLEEVE .....	1
8	PAOZZ	97403	13211E8322	CHAIN ASSEMBLY, AIR .....	1
9	PAOZZ	07707	SD42BS	RIVET, BLIND .....	8
10	PBOZZ	67302	12005-100	DOOR, OUTSIDE AIR.....	1
11	MFFZZ	67302	12005-2	GASKET MAKE FROM P/N MIL-R-6130, .....	2
				½ INCH X 1/8 INCH.....	
12	MFFZZ	67302	12005-3	GASKET MAKE FROM P/N MIL-R-6130, .....	2
				½ INCH X 1/8 INCH.....	
13	PBOZZ	67302	12005-1	DOOR .....	1
14	PBOZZ	97403	13211E8191	HINGE, BUTT.....	2
15	PBOZZ	67302	12035-100	FRAME, OUTSIDE AIR .....	1

END OF FIGURE

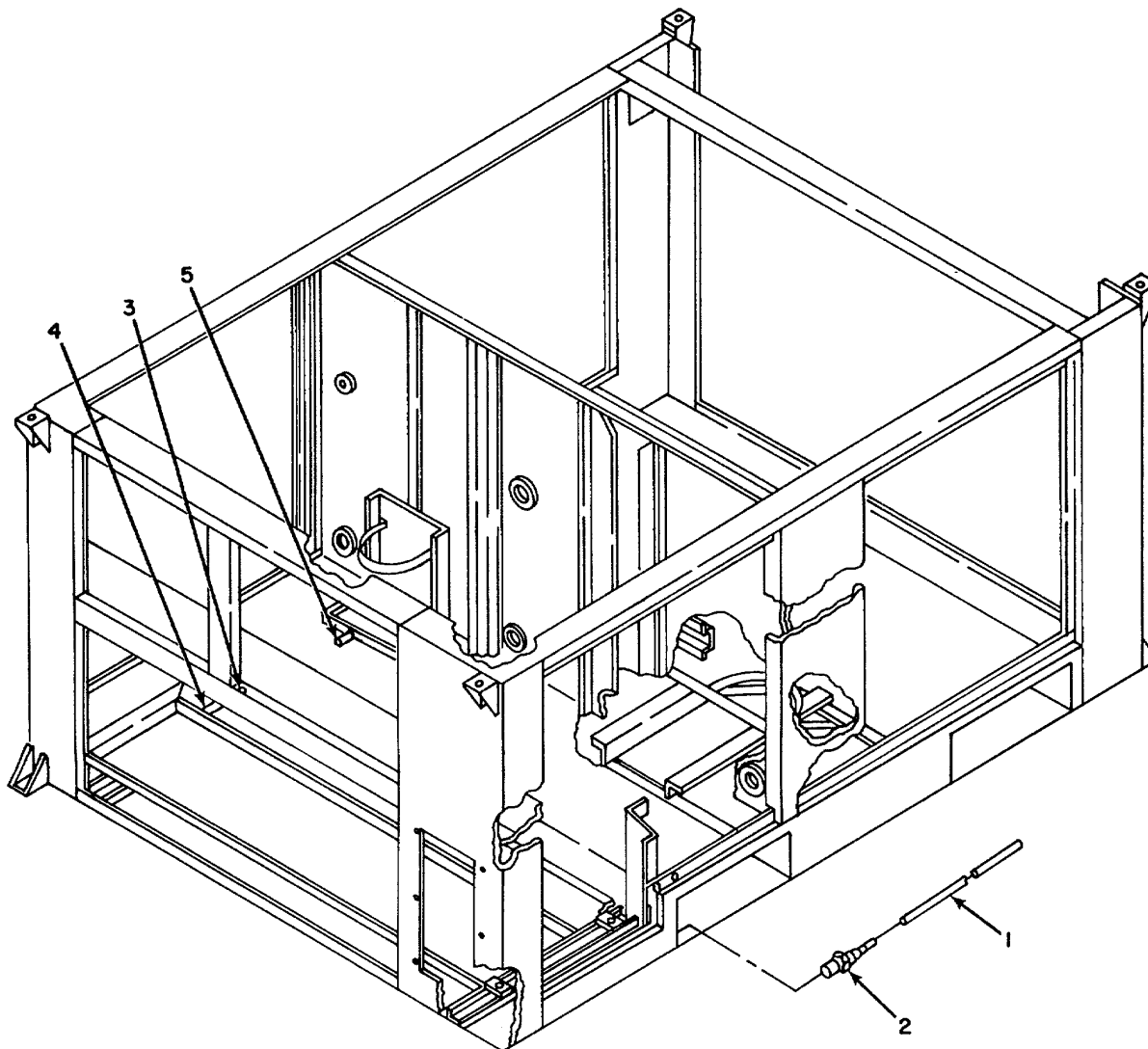


Figure 13. Condensate Traps and Drain Hose Installation

SECTION II

TM 9-4120-398-24P

CO1

(1) ITEM NO	(2) SMR CODE	(3) CAGEC	(4) PART NUMBER	(5) DESCRIPTION AND USABLE ON CODES(UOC)	(6) QTY
				<b>GROUP 03</b>	<b>AIR CIRCULATING AND CONDENSATE DRAIN SYSTEM</b>
				<b>FIG. 13</b>	<b>CONDENSATE TRAPS AND DRAIN HOSE INSTALLATION</b>
1	PAOZZ	79470	H10008	HOSE, NONMETALLIC .....	2
2	PAOZA	30327	KF08-04PS	ADAPTER, STRAIGHT, PI .....	2
3	PAOZZ	99017	4	CAP, PROTECTIVE, BUST .....	2
4	MFOZZ	61501	12090-34	HOSE, DRAIN MAKE FROM P/N R-360A-1/2 .....	2
5	PAOZZ	97403	3/8PDX0.60WALL	TUBE, COPPER .....	2

END OF FIGURE

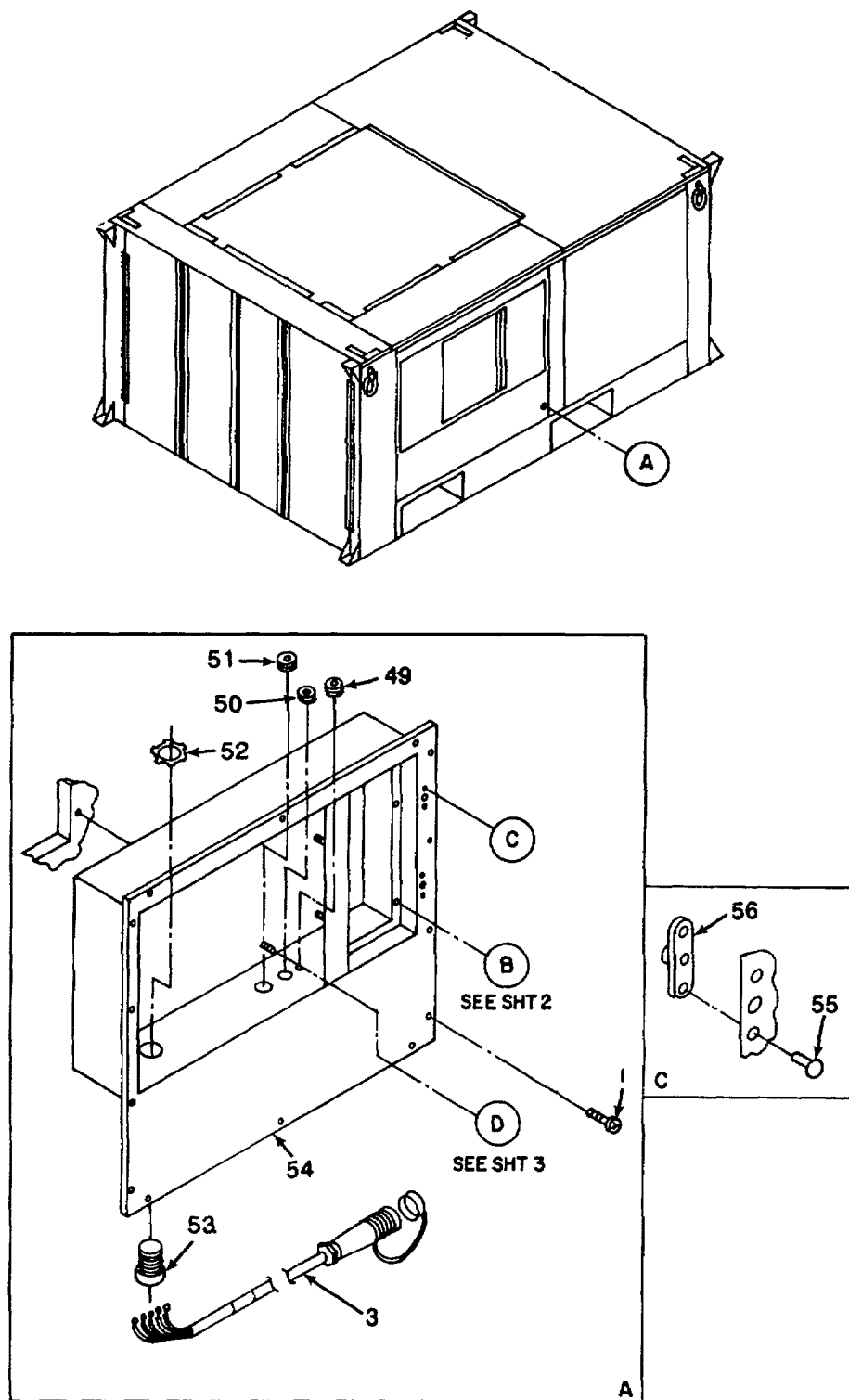


Figure 14. External Control Panel and Internal Control Board (Sheet 1 of 3)

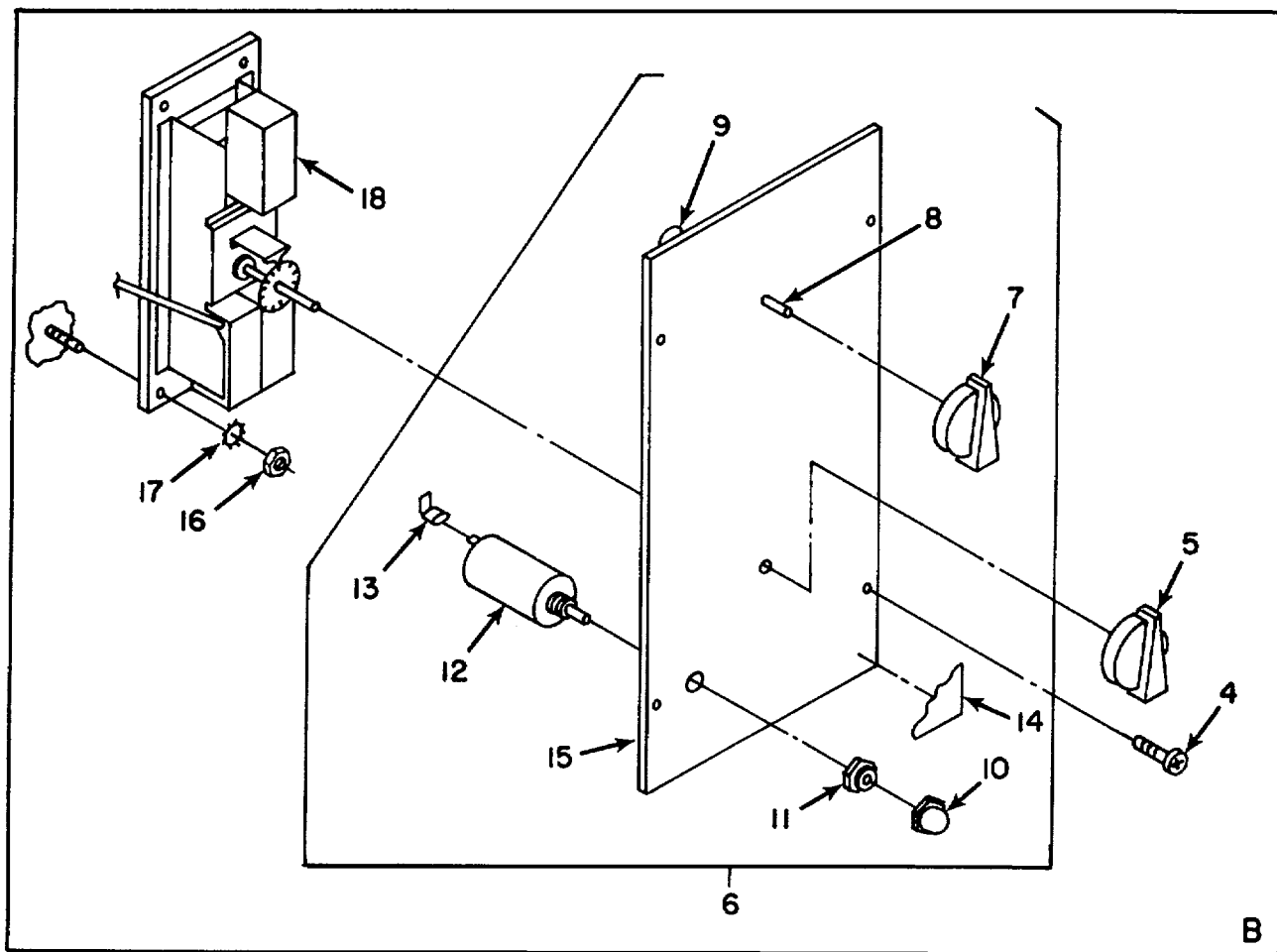


Figure 14. External Control Panel and Internal Control Board (Sheet 2 of 3)



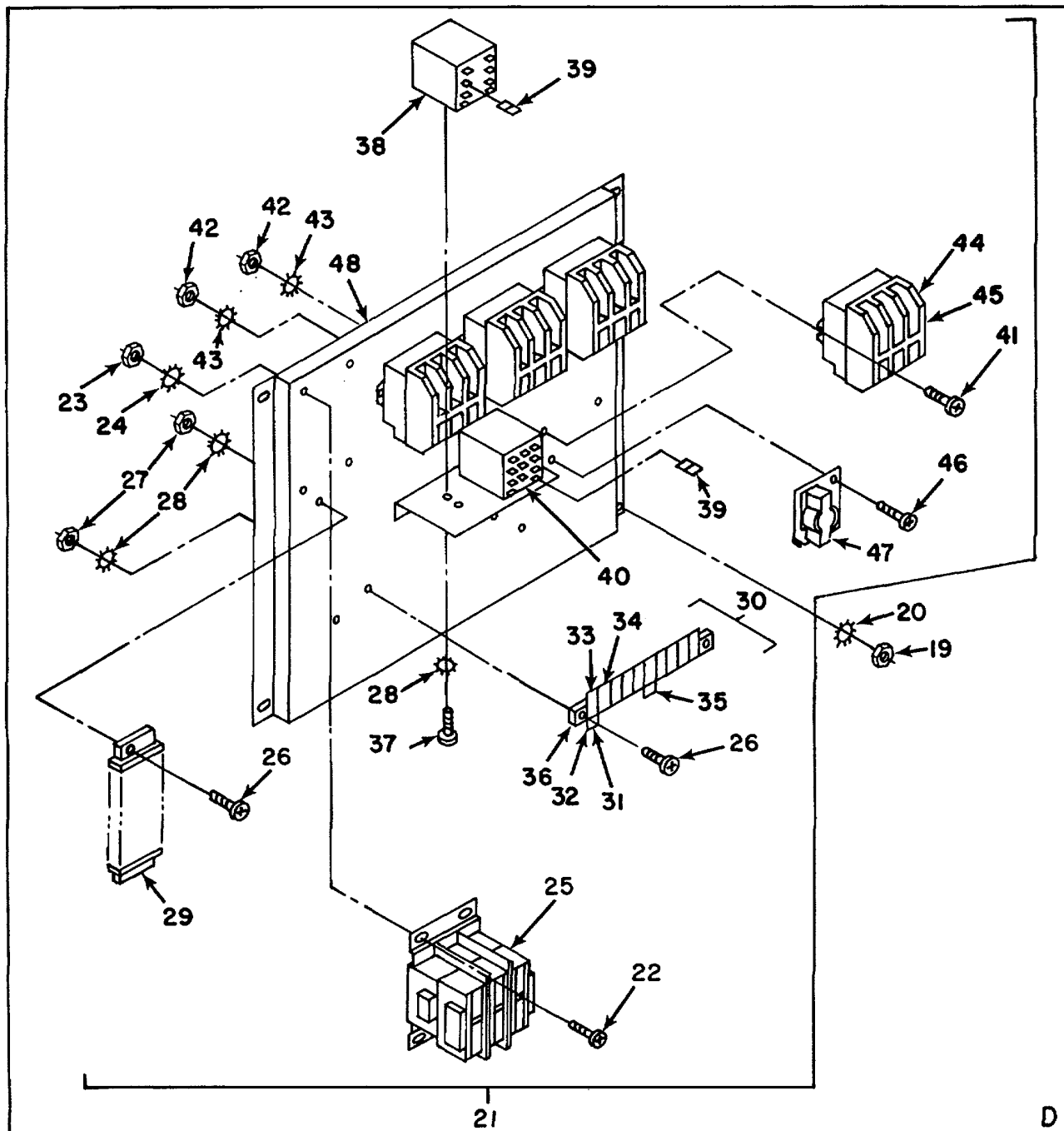


Figure 14. External Control Panel and Internal Control Board (Sheet 3 of 3)

## SECTION II

TM 9-4120-398-24P  
CO2

(1) ITEM NO	(2) SMR CODE	(3) CAGEC	(4) PART NUMBER	(5) DESCRIPTION AND USABLE ON CODES(UOC)	(6) QTY
				<b>GROUP 04</b>	
				<b>FIG. 14</b>	
				<b>ELECTRICAL</b>	
				<b>EXTERNAL CONTROL PANEL AND</b>	
				<b>INTERNAL CONTROL BOARD</b>	
1	PAOZZ	96906	MS35206-267	SCREW MACHINE.....	14
2	XBOZZ	67302	12082-104	CONTROL PANEL ASSY.....	1
3	PAOZZ	67302	12139-100	.CABLE ASSY, POWER W1.....	1
4	PBOZZ	96906	MS35206-259	.SCREW, MACHINE.....	4
5	PBOZZ	86797	RB-75	.KNOB.....	1
6	PBOZZ	67302	12084-100	.PANEL, RH SUB.....	1
7	PBOZZ	86797	RC-175	..KNOB.....	1
8	PAOZZ	82121	32303AS	..SWITCH, ROTARY.....	1
9	PBOZZ	75382	600RJ3	..BUS, CONDUCTOR.....	1
10	PAOZZ	97539	NC-3030	..BOOT, DUST AND MOIST.....	1
11	XDOZZ	97539	2500/1/6	..INSERT, SCREW THREAD.....	1
12	PAOZZ	06402	45-700-1G1-P10- 5 AMP	..CIRCUIT BREAKER CB1.....	1
13	PAOZZ	59730	FTA-250	..TERMINAL, QUICK DISC.....	1
14	XBOZZ	67302	12120-1	..PLATE, INSTRUCTION.....	1
15	XBOZZ	67302	12074-1	..PANEL, RH SUB.....	1
16	PAOZZ	96906	MS35649-262	..NUT, PLAIN, HEXAGON.....	4
17	PAOZZ	96906	MS35333-37	..WASHER, LOCK.....	4
18	PAOZZ	67302	12108-1	..THERMOSTAT, FLOW.....	1
19	PAOZZ	96906	MS35649-2252	..NUT, PLAIN, HEXAGON.....	4
20	PAOZZ	96906	MS35333-40	..WASHER, LOCK.....	4
21	XBOZZ	67302	12083-101	..PANEL, LH SUB.....	1
22	PAOZZ	96906	MS35206-244	..SCREW, MACHINE.....	4
23	PAOZZ	96906	MS35333-38	..WASHER, LOCK.....	4
24	PAOZZ	96906	MS35649-282	..NUT, PLAIN, HEXAGON.....	4
25	PAOZZ	14604	30D0-303SV	..RELAY, CORPRESSOR K3.....	1
26	PAOZZ	96906	MS35206-232	..SCREW, MACHINE.....	4
27	PAOZZ	96906	MS35649-262	..NUT, PLAIN, HEXAGON.....	4
28	PAOZZ	96906	MS35333-37	..WASHER, LOCK.....	8
29	PBOZZ	75382	603-5-F	..TERMINAL BOARD.....	1
30	PBOZZ	67302	12103-100	..TERMINAL BOARD.....	1
31	PAOZZ	75382	KT46	...TAB.....	1
32	PAOZZ	75382	KT47	...TAB.....	1
33	PAOZZ	75382	KT48	...TAB.....	1
34	PAOZZ	75382	KT50	...TAB.....	9
35	PAOZZ	75382	KT52	...TAB.....	1
36	PBOZZ	83330	899-10-F	...TERMINAL BOARD.....	1
37	PAOZZ	96906	MS35206-226	..SCREW, MACHINE.....	4
38	PAOZZ	67302	12112-1	..RELAY, CONTROL.....	1
39	PAOZZ	00779	61045-1	..TERMINAL, QUICK DISC.....	6
40	PAOZZ	67302	12111-1	..RELAY, CONTROL.....	1
41	PAOZZ	96906	MS35206-268	..SCREW, MACHINE.....	8
42	PAOZZ	96906	MS35649-202	..NUT, PLAIN, HEXAGON.....	8
43	PAOZZ	96906	MS35333-39	..WASHER, LOCK.....	8
44	PAOZZ	23826	41NB3OAF-X26	..RELAY, ELECTROMAGNET.....	4
45	PAOZZ	67302	12138-1	..TERMINAL MARKERS.....	4
46	PAOZZ	96906	MS35206-261	..SCREW, MACHINE.....	1

SECTION II

TM 9-4120-398-24P

(1) ITEM NO	(2) SMR CODE	(3) CAGEC	(4) PART NUMBER	(5) DESCRIPTION AND USABLE ON CODES(UOC)	(6) QTY
47	PAOZZ	67302	12110-1	..RELAY, THERMAL.....	1
48	XBOZZ	67302	12053-100	..SUB PANEL, LH.....	1
49	PAOZZ	81349	MS35489-2	.GROMMET, NONMETALLIC.....	1
50	PAOZZ	96906	MS35489-12	.GROMMET, NONMETALLIC.....	1
51	PAOZZ	96906	MS35489-22	.GROMMET, NONMETALLIC.....	1
52	PAOZZ	59730	144	.LOC.NUT, ELECTRICAL.....	1
53	PAOZZ	59730	2559	.BOX CONNECTOR, ELECT.....	1
54	XBOZZ	67302	12026-100	.ENCLOSURE.....	1
55	PAOZZ	07707	SD42BS	..RIVET, BLIND.....	4
56	XBOZZ	71286	244-16	..RECEPTACLE, TURNLOCK.....	2

END OF FIGURE

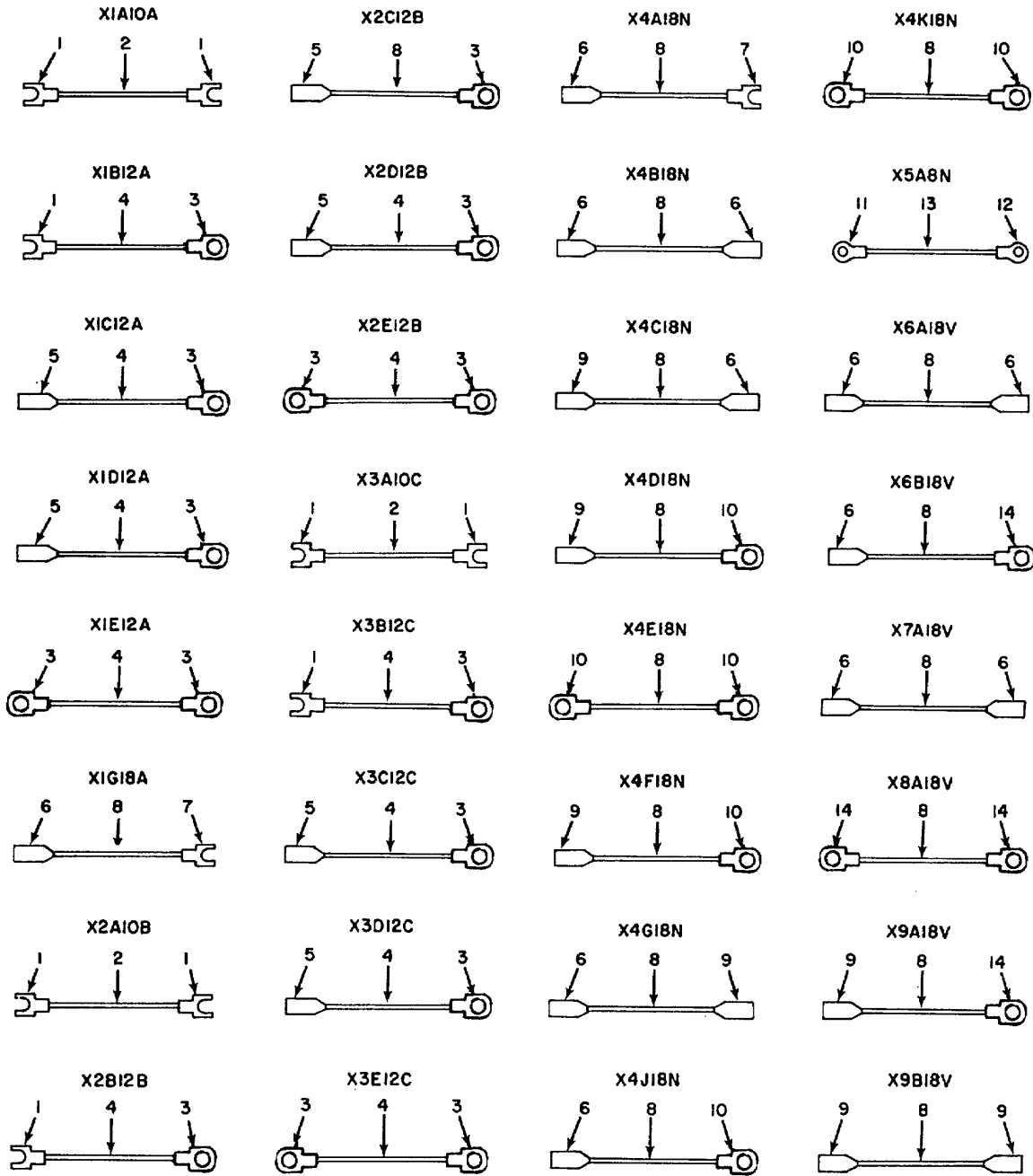


Figure 15. Electrical Leads (Sheet 1 of 3)

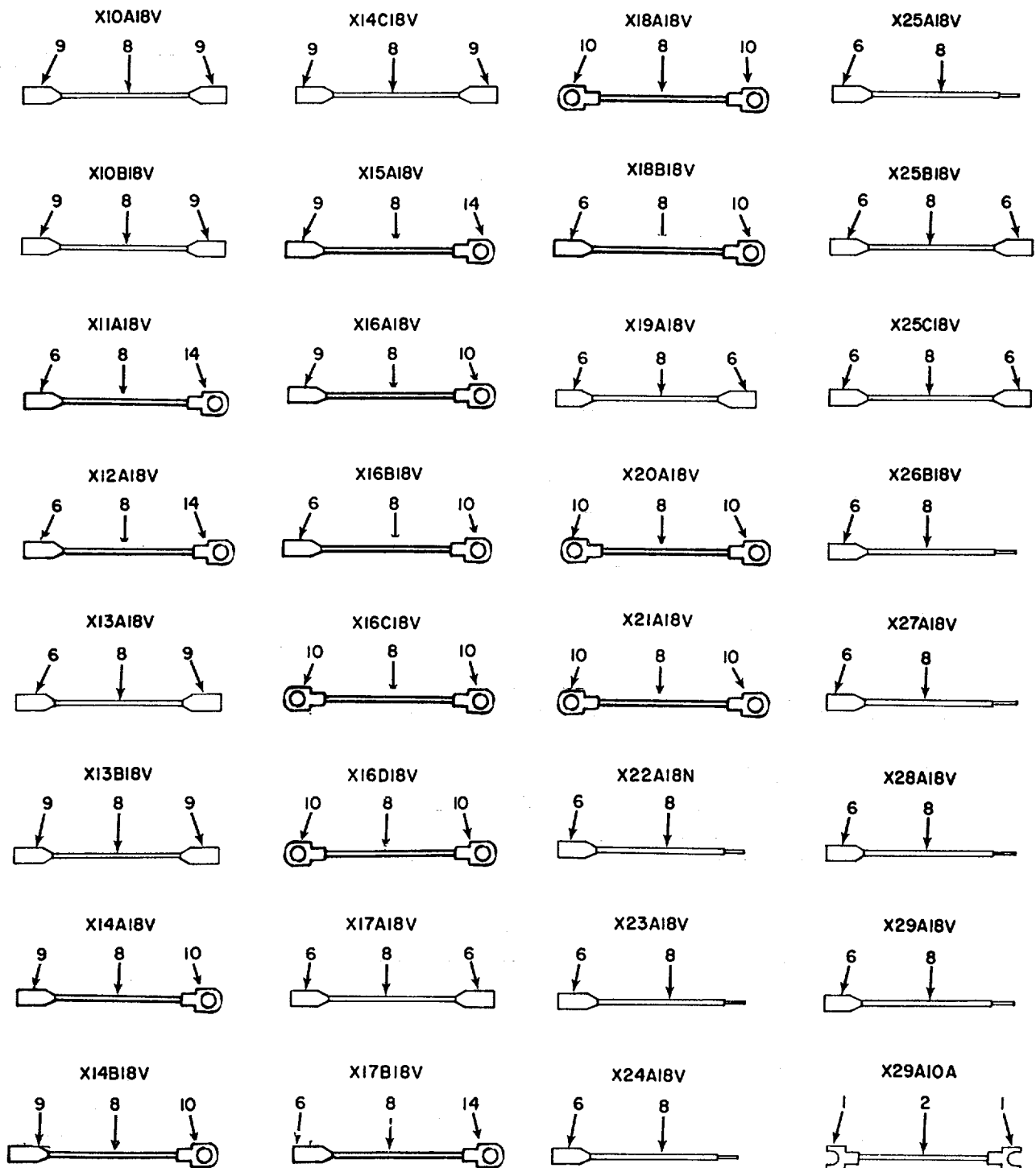


Figure 15. Electrical Leads (Sheet 2 of 3)

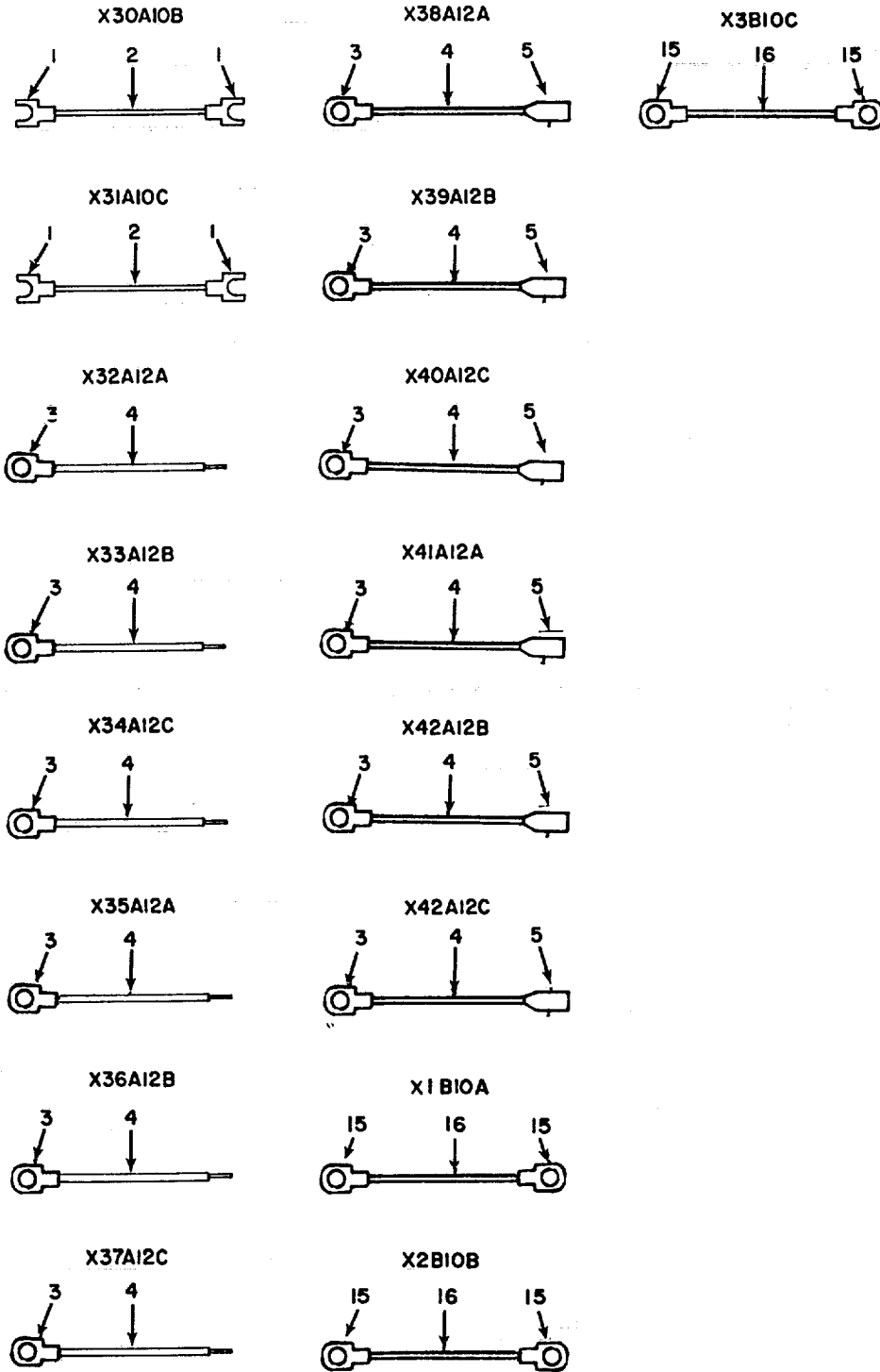


Figure 15. Electrical Leads (Sheet 3 of 3)

## SECTION II

TM 9-4120-398-24P

(1) ITEM NO	(2) SMR CODE	(3) CAGEC	(4) PART NUMBER	(5) DESCRIPTION AND USABLE ON CODES(UOC)	(6) QTY
				<b>GROUP 04</b>	<b>ELECTRICAL</b>
				<b>FIG. 15</b>	<b>ELECTRICAL LEADS</b>
1	PBOZZ	59730	RC1153	TERMINAL, FORK .....	15
2	MOOZZ	81349	M5086/2-10-9	WIRE, ELECTRICAL MAKE FROM P/N .....	V
				M5086/2-10-9, LENGTH AS REQUIRED.....	
3	PBOZZ	59730	RC1123	TERMINAL, LUG .....	27
4	MOOZZ	81349	M5086/1-12-9	WIRE, ELECTRICAL MAKE FROM P/N .....	V
				M5086/1-12-9 LENGTH AS REQUIRED.....	
5	PAOZO	59730	RC257	TERMINAL, QUICK DISC .....	11
6	PAOZZ	59730	RA257	TERMINAL, QUICK DISC .....	32
7	PAOZZ	59730	RA1153	TERMINAL, FORK .....	2
8	MOOZZ	81349	M5086/1-18-9	WIRE, ELECTRICAL MAKE FROM P/N .....	V
				M5086/1-18-9, LENGTH AS REQUIRED.....	
9	PAOZZ	59730	RAD-187	TERMINAL, QUICK DISC .....	20
10	PAOZZ	59730	RA1123	TERMINAL, LUG .....	22
11	PAOZZ	96906	MS25036-116	TERMINAL, LUG .....	1
12	PAFZZ	96906	MS25036-115	TERMINAL, LUG .....	1
13	MOOZZ	81349	M5086/2-8-9	WIRE, ELECTRICAL MAKE FROM P/N .....	V
				M5086/2-8-9, LENGTH AS REQUIRED.....	
14	PAOZZ	21340	3260620	TERMINAL, LUG .....	8
15	XDFZZ	98410	C-2198-10X	TERMINAL, LUG .....	6
16	MFFZZ	81349	M5086/2-10-9	WIRE, ELECTRICAL MAKE FROM P/N .....	V
				M5086/2-10-9 LENGTH AS REQUIRED.....	

END OF FIGURE

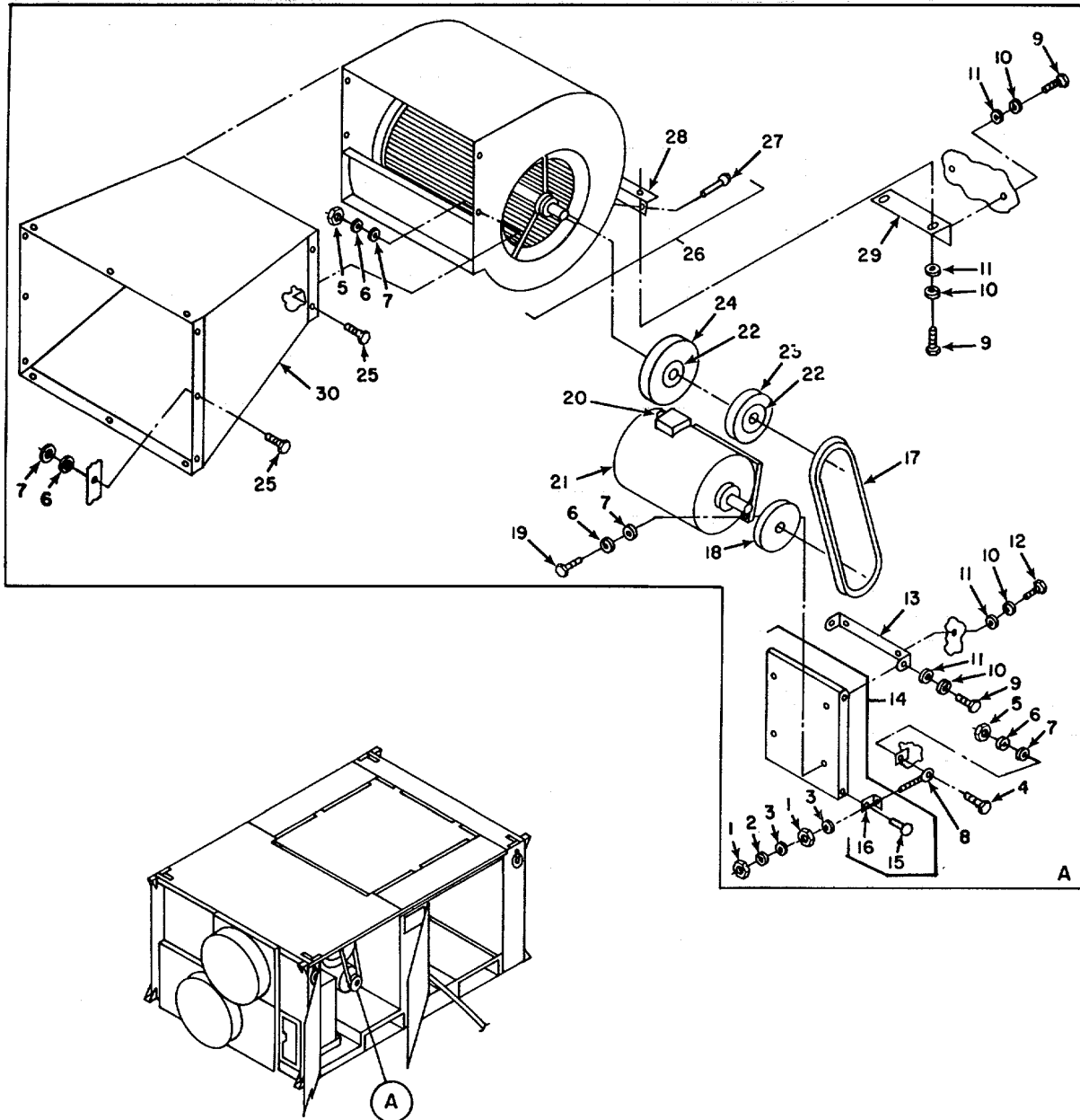


Figure 16. Evaporator Blower and Plenum Installation



SECTION II

TM 9-4120-398-24P

(1) ITEM NO	(2) SMR CODE	(3) CAGEC	(4) PART NUMBER	(5) DESCRIPTION AND USABLE ON CODES(UOC)	(6) QTY
-------------------	--------------------	--------------	-----------------------	---	------------

**GROUP 05                      EVAPORATOR BLOWER MOTOR  
AND HEATERS**

**FIG. 16                      EVAPORATOR BLOWER AND  
PLENUM INSTALLATION**

1	PBOZZ	96906	MS51967-8	NUT, PLAIN, HEXAGON .....	2
2	PBOZZ	96906	MS35338-46	WASHER, LOCK .....	1
3	PBOZZ	96906	MS27183-14	WASHER, FLAT .....	2
4	PBOZZ	96906	MS90728-12	SCREW, CAP, HEXAGON H .....	1
5	PBOZZ	96906	MS51967-2	NUT, PLAIN, HEXAGON .....	8
6	PBOZZ	96906	MS35338-44	WASHER, LOCK .....	24
7	PBOZO	96906	MS27183-10	WASHER, FLAT .....	24
8	PBOZZ	6730	12013-1	BOLT, EYE .....	1
9	PAFZZ	96906	MS90725-34	BOLT, MACHINE .....	2
10	PBOZZ	96906	MS35338-45	WASHER, LOCK .....	4
11	PBOZZ	96906	MS27183-12	WASHER, FLAT .....	4
12	PBOZZ	96906	MS90725-89	SCREW, CAP, HEXAGON H .....	2
13	XBOZZ	67302	12037-100	BRACKET, MOTOR MOUNT .....	1
14	XBOZZ	67302	12038-100	SUPPORT, MOTOR .....	1
15	XAOZZ	96906	MS20613-8P6	.RIVET, SOLID .....	1
16	XAOZZ	67302	12038-2	.ANGLE .....	1
17	PAOZZ	96906	MS39255-A35	V-BELT, A SECTION.....	1
18	PBOZZ	71956	8400	PULLEY, GROOVE .....	1
19	PBOZZ	96906	MS90725-6	SCREW, CAP, HEXAGON H .....	4
20	PBOZZ	60969	SP3302	BOX CONNECTOR, ELECT .....	1
21	PAOOZ	92940	601996	MOTOR, ALTERNATING C .....	1
22	PAOZZ	71956	121162	BUSHING, SHEAVE .....	2
23	XDOZZ	71956	121022	PULLEY .....	1
24	XDOZZ	71956	121027	PULLEY, A K FIFTY SI .....	1
25	PBOZZ	96906	MS90725-5	SCREW, CAP, HEXAGON H .....	19
26	PAOOZ	67302	12061-100	FAN, ELECTRICAL .....	1
27	XAOZZ	07707	AD42BS	.RIVET, BLIND .....	3
28	XAOZZ	67302	12061-3	.BRACKET, MOUNTING .....	1
29	XBOZZ	67302	12060-100	SUPPORT BLOWER .....	1
30	XBOZZ	67302	12062-100	PLENUM, AIR DISCHARG .....	1

END OF FIGURE

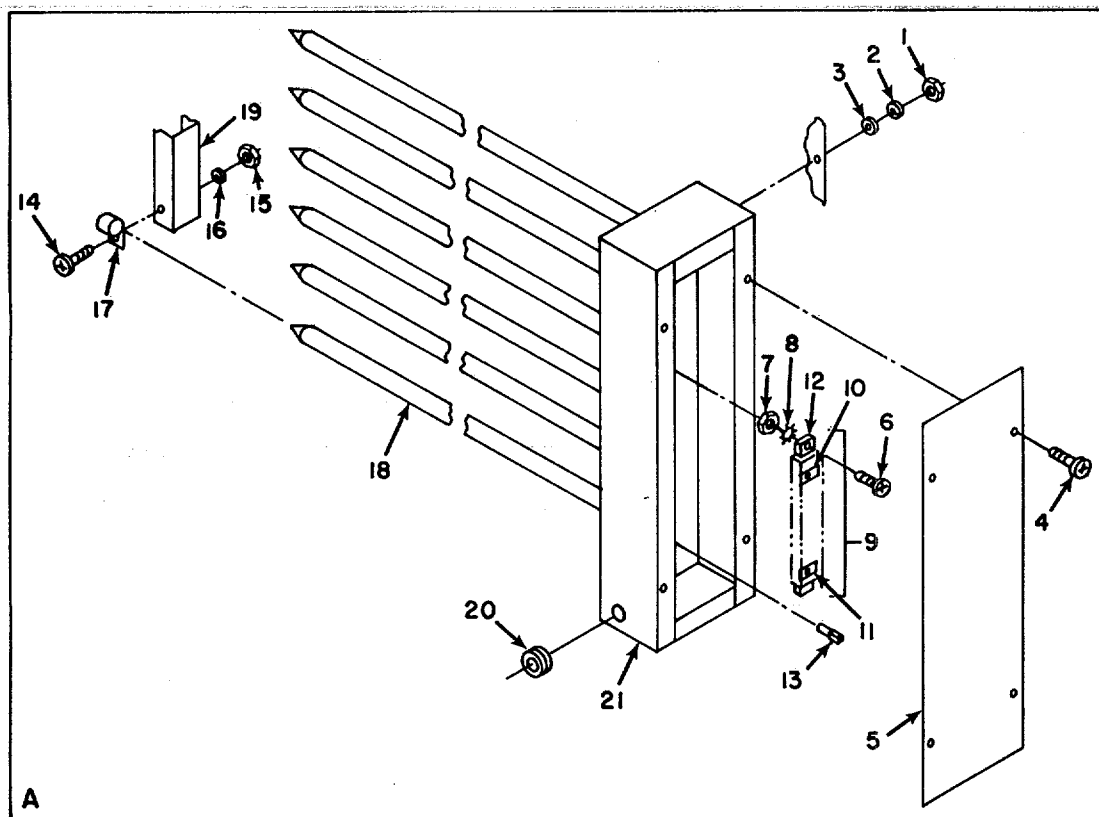
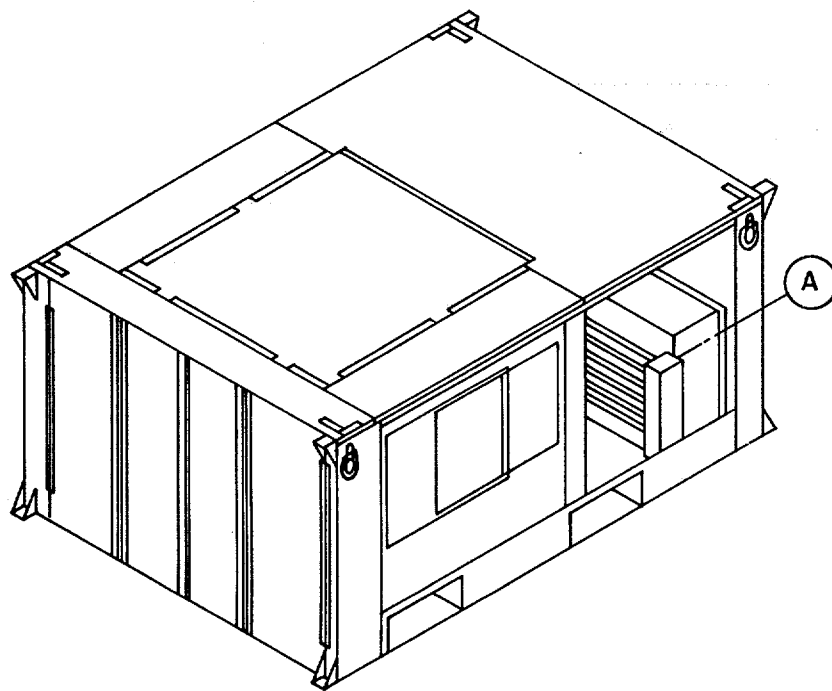


Figure 17. Heater Assembly

SECTION II

TM 9-4120-398-24P  
CO2

(1) ITEM NO	(2) SMR CODE	(3) CAGEC	(4) PART NUMBER	(5) DESCRIPTION AND USABLE ON CODES(UOC)	(6) QTY
				<b>GROUP 05    EVAPORATOR BLOWER MOTOR AND HEATERS</b>	
				<b>FIG. 17        HEATER ASSEMBLY</b>	
1	PBOZZ	96906	MS51967-2	NUT, PLAIN, HEXAGON .....	5
2	PBOZZ	96906	MS35338-44	WASHER, LOCK.....	5
3	PAOZO	96906	MS27183-10	WASHER, FLAT.....	5
4	PBOZZ	96906	MS35206-259	SCREW, MACHINE.....	4
5	XBOZZ	67302	12072-1	COVER .....	1
6	PAOZZ	96906	MS35206-232	SCREW, MACHINE.....	2
7	PAOZZ	96906	MS35649-260	NUT, PLAIN, HEXAGON .....	2
8	PAOZZ	96906	MS35333-37	WASHER, LOCK.....	2
9	PBOZZ	67302	12050-100	TERMINAL BOARD.....	1
10	PBOZZ	79382	KT53	.TERMINAL, TAB .....	6
11	PBOZZ	75382	KT48	.TAB .....	10
12	PBOZZ	83330	899-10F	.TERMINAL BOARD.....	1
13	PBOZZ	98410	33-8141	TERMINAL, QUICK DIS .....	2
14	PAOZZ	96906	MS35206-263	SCREW, MACHINE.....	6
15	PAOZZ	96906	MS35338-45	WASHER, LOCK.....	6
16	PAOZZ	96906	MS35649-202	NUT, PLAIN, HEXAGON .....	6
17	PBOZZ	67302	12014-1	STRAP .....	6
18	PAOZZ	67302	12116-1	ELEMENT, HEATING.....	6
19	XBOZZ	67302	12059-100	END, HEATER .....	1
20	PBOZZ	28520	2119	BUSHING .....	1
21	XBOZZ	67302	12063-101	END, HEATER .....	1

END OF FIGURE

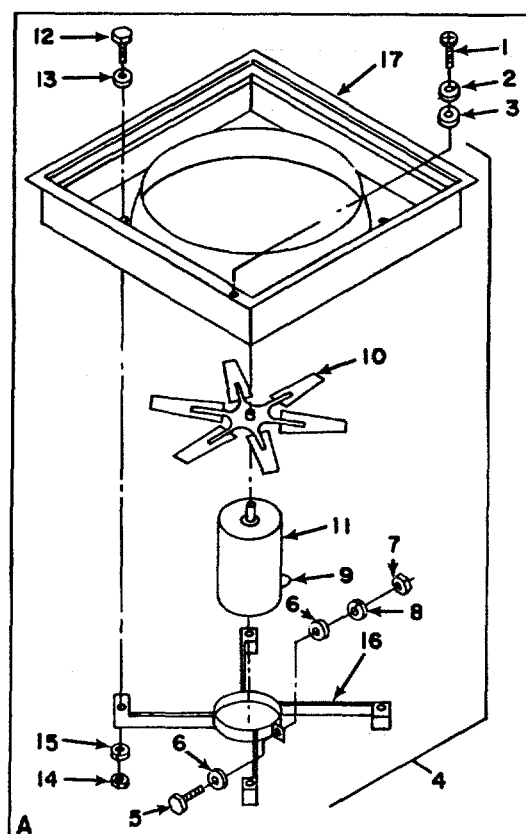
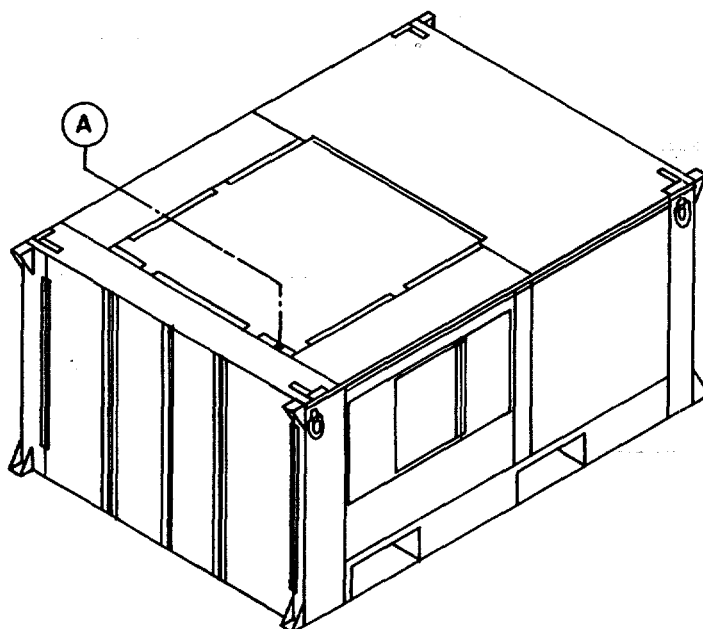


Figure 18. Condenser Fan Motor and Impeller

(1) ITEM NO	(2) SMR CODE	(3) CAGEC	(4) PART NUMBER	(5) DESCRIPTION AND USABLE ON CODES(UOC)	(6) QTY
				<b>GROUP 06 CONDENSER FAN MOTOR AND IMPELLER</b>	
				<b>FIG. 18 CONDENSER FAN MOTOR AND IMPELLER</b>	
1	PAOZZ	96906	MS35206-264	SCREW, MACHINE .....	36
2	PAOZZ	96906	MS35338-43	WASHER, LOCK .....	36
3	PAOZZ	96906	MS27183-8	WASHER, FLAT .....	36
4	XBOZZ	67302	12012-101	FAN, CONDENSER .....	1
5	PAOZZ	96906	MS90725-36	.BOLT, MACHINE .....	1
6	PAOZZ	96906	MS27183-12	.WASHER, FLAT.....	2
7	PAOZZ	96906	MS51967-5	.NUT, PLAIN, HEXAGON .....	1
8	PAOZZ	96906	MS35338-45	.WASHER, LOCK .....	1
9	PBOZZ	75282	ZX-8	.BOX CONNECTOR, ELECT .....	1
10	PBOZZ	22038	CT56-24-22	.IMPELLER, FAN, AXIAL .....	1
11	XDOFF	92940	601995	.MOTOR, ALTERNATING C .....	1
12	PBOZZ	96906	MS90725-6	.SCREW, CAP, HEXAGON H .....	4
13	PBOZO	96906	MS27183-10	.WASHER, FLAT.....	4
14	PBOZZ	96906	MS51967-2	.NUT, PLAIN, HEXAGON .....	4
15	PBOZZ	96906	MS35338-44	.WASHER, LOCK .....	4
16	XBOZZ	67302	12017-100.	.MOUNT, CONDENSER .....	1
17	XBOZZ	67302	12019-101	.FRAME, FAN .....	1

END OF FIGURE

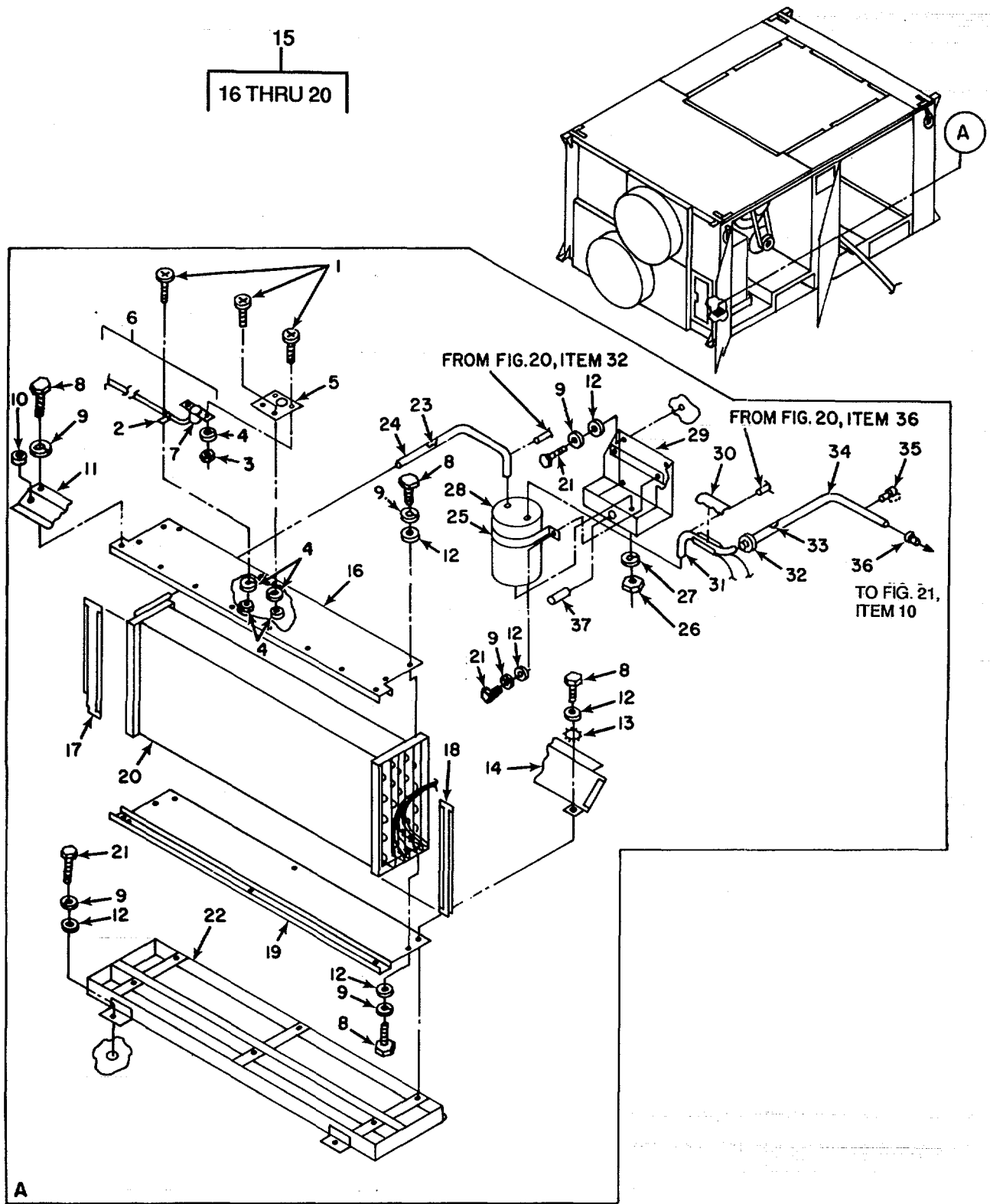


Figure 19. Evaporator Coil Installation

(1) ITEM NO	(2) SMR CODE	(3) CAGEC	(4) PART NUMBER	(5) DESCRIPTION AND USABLE ON CODES(UOC)	(6) QTY
				<b>GROUP 07</b>	<b>REFRIGERATION SYSTEM</b>
				<b>FIG. 19</b>	<b>EVAPORATOR COIL INSTALLATION</b>
1	PAFZZ	96906	MS35206-244	SCREW, MACHINE .....	6
2	PAFZZ	96906	MS21322-32	CLAMP, LOOP .....	3
3	PAFZZ	96906	MS35338-42	WASHER, LOCK .....	6
4	PAFZZ	96906	MS35649-282	NUT, PLAIN, HEXAGON .....	6
5	XBFZZ	67302	12036-1	BRACKET, HIGH TEMP .....	1
6	PAFFZ	67302	12051-101	SWITCH, THERMOST .....	1
7	XAOZZ	67302	12115-1-	SWITCH, THERMOSTAT .....	1
8	PAFZO	96906	MS90725-3	SCREW, CAP, HEXAGON H .....	19
9	PAFZZ	96906	MS35338-44	WASHER, LOCK .....	26
10	PAFZZ	81349	MS35489-2	GROMMET, NONMETALLIC .....	2
11	XBFZZ	67302	12081-100	BAFFLE, COIL TOP .....	1
12	PAFZO	96906	MS27183-10	WASHER, FLAT .....	21
13	PAFZZ	96906	MS35333-40	WASHER, LOCK .....	3
14	XBFZZ	67302	12121-100	SHIELD, DRIP PAN .....	1
15	PBFZZ	67302	12076-100	COIL, EVAPORATOR .....	1
16	XBFZZ	67302	12077-100	.PLATE, TOP .....	1
17	XBFZZ	67302	12079-100	.BAFFLE, COIL, LS .....	1
18	XBFZZ	67302	12080-100	.BAFFLE, COIL, RS .....	1
19	XBFZZ	67302	12078-100	.PLATE, BOTTOM .....	1
20	XBFZZ	67302	12020-1	.COOLING COIL, AIR, DU .....	1
21	PBFZZ	96906	MS90725-5	SCREW, CAP, HEXAGON H.....	10
22	XBFZZ	67302	12071-100	PAN, DRIP, AIR CONDIT .....	1
23	MFFZZ	67302	12090-120	INSULATION MAKE FROM P/N MIL-P- 15280, 1-1/8 IN. ID X 3/8 IN. WALL.....	V
24	MFFZZ	67302	12090-106	1/2TUBE, BENT MAKE FROM P/N WW-T-799, 1-1/8 INCH OD .....	1
25	XBFZZ	67302	12007-1	CLAMP, ACCUM TANK .....	1
26	PBFZZ	96906	MS51967-8	NUT, PLAIN, HEXAGON .....	1
27	PBFZZ	96906	MS35338-46	WASHER, LOCK .....	1
28	PAFZZ	97765	3832	ACCUMULATOR, SUCTION .....	1
29	XBFZZ	67302	12054-100	BRACKET, ACCUMULATOR .....	1
30	MFFZZ	67302	12090-122	INSULATION MAKE FROM MIL-P-15280, 1-5/8 INCH X 3/4 INCH WALL.....	V
31	MFFZZ	67302	12126-1	TUBE, BENT MAKE FROM P/N WW-T-799, 1-1/8 INCH OD .....	1
32	PAFZZ	14829	1110	GROMMET, NONMETALLIC .....	1
33	MFFZZ	67302	12090-121	INSULATION MAKE FROM P/N MIL-P- 15280, 1-1/8 IN. ID X 3/4 IN. WALL.....	V
34	MFFZZ	67302	12090-163	TUBE, BENT MAKE FROM P/N WW-T-799, 1-1/8 INCH OD .....	1
35	PAFZZ	07295	VUS3-46AC	VALVE, PNEUMATIC TAN .....	1
36	PAFZZ	41947	W-1049	REDUCER, TUBE .....	1
37	XBFZZ	67302	1/4DXO.30WALL	TUBE, COPPER .....	1

END OF FIGURE

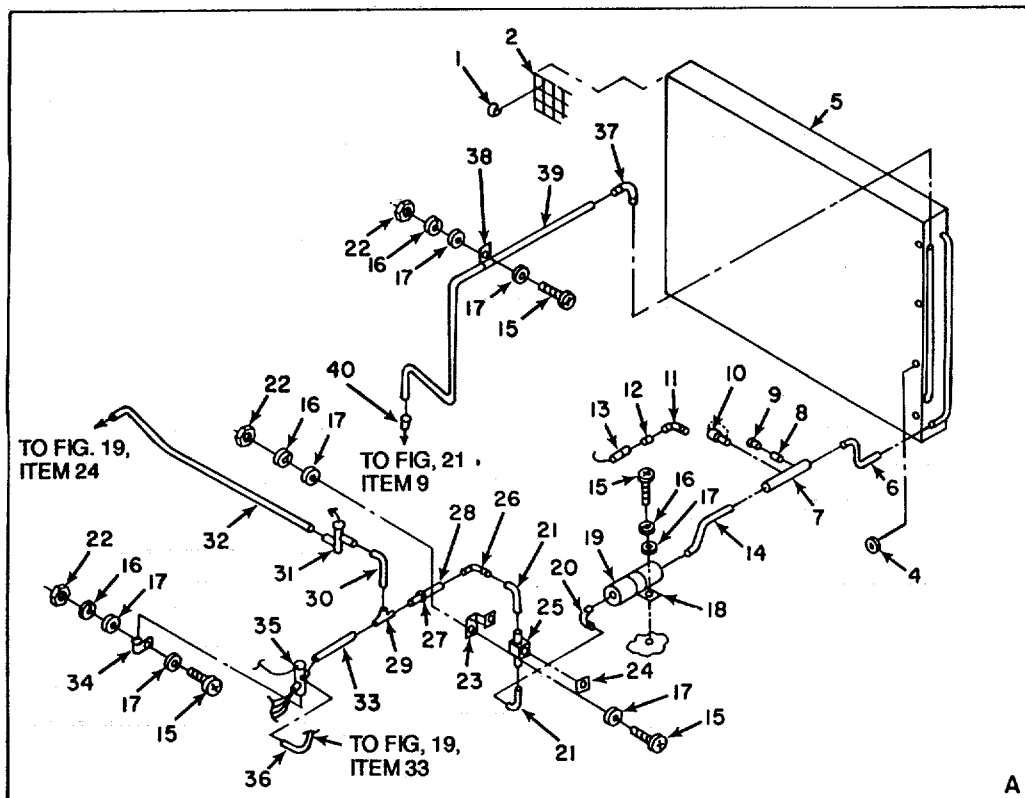
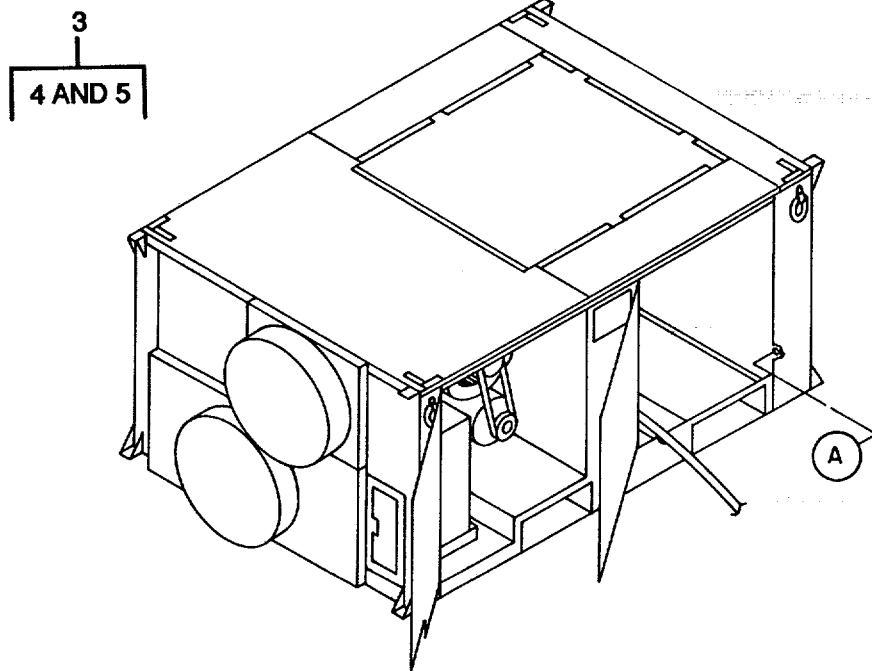


Figure 20. Condenser Coil Installation



## SECTION II

TM 9-4120-398-24P

(1) ITEM NO	(2) SMR CODE	(3) CAGEC	(4) PART NUMBER	(5) DESCRIPTION AND USABLE ON CODES(UOC)	(6) QTY
				<b>GROUP 07 REFRIGERATION SYSTEM</b>	
				<b>FIG. 20 CONDENSER COIL INSTALLATION</b>	
1	PAFZZ	78553	C27091-014-4	U-CLIP .....	8
2	XBFZZ	97403	13229E6147	GUARD, CONDENS COIL .....	1
3	PBFZZ	67302	12022-100	COIL, CONDENSER .....	1
4	XAFZZ	96906	MS27130-53	.NUT, PLAIN, BLIND RIV .....	1
5	XAFZZ	67302	12022-1	.COIL CONDENSER .....	1
6	MFFZZ	67302	12090-110	TUBE, BENT MAKE FROM P/N WW-T-799, .....	1
				5/8 INCH O D .....	
7	PAFZZ	67302	12125-1	MANIFOLD .....	1
8	PAFZZ	41947	W1514	ADAPTER, STRAIGHT, PI .....	1
9	PAFZZ	58553	92-180	PLUG, PIPE FUSIBLE .....	1
10	PAFZZ	07295	VUS3-46AC	VALVE, PNEUMATIC T A N .....	1
11	PAFZZ	41947	W-2612	ELBOW, TUBE .....	1
12	PAFZZ	41947	A-3494	REDUCER, TUBE .....	1
13	PAFZZ	73803	20PS002BB450K375 K	SWITCH, PRESSURE .....	1
14	MFFZZ	67302	12090-112	TUBE, BENT MAKE FROM P/N WW-T-799, .....	1
				5/8 INCH O D .....	
15	PAFZZ	96906	MS35206-264	SCREW, MACHINE .....	4
16	PAFZZ	96906	MS35338-43	WASHER, LOCK .....	4
17	PAFZZ	96906	MS27183-8	WASHER, FLAT .....	4
18	PBFZZ	67302	12008-1	CLAMP, FILTER DRIER .....	1
19	PAFZZ	70255	EK-305-9	FILTER, DRIER .....	1
20	PAFZZ	41947	W-2822	ELBOW, TUBE .....	1
21	MFFZZ	67302	12090-113	TUBE, BENT MAKE FROM P/N WW-T-799, .....	2
				5/8 INCH OD .....	
22	PAFZZ	96906	MS35649-202	NUT, PLAIN, HEXAGON .....	3
23	PBFZZ	67302	12091-1	CLAMP, LIQUID IND .....	1
24	MFFZZ	67302	12092-1	GASKET MAKE FROM P/N MIL-R-6130, 1/ 2 INCH X 1/8 INCH .....	1
25	PAFZZ	58553	50-10S	INDICATOR, SIGHT, LIQ .....	1
26	PAFZZ	41947	W-2722	ELBOW, TUBE .....	1
27	PAFZZ	14829	560	GROMMET, NONMETALLIC .....	1
28	MFFZZ	67302	12090-114	TUBE, STRAIGHT MAKE FROM P/N WW-T- 799, 5/8 INCH OD .....	1
29	PAFZZ	41947	W-4011	TEE, TUBE .....	1
30	MFFZZ	67302	12090-116	TUBE, BENT MAKE FROM P/N WW-T-799, .....	1
				3/8 INCH OD .....	
31	PAFZZ	91494	328VA70328-048	VALVE, EXPANSION .....	1
32	MFFZZ	67302	12090-117	TUBE, BENT MAKE FROM P/N WW-T-799, .....	1
				1/2 INCH OD .....	
33	MFFZZ	67302	12090-115	TUBE, BENT MAKE FROM P/N WW-T-799, .....	1
				1/2 INCH OD .....	
34	PAFZZ	96906	MS21919WDF18	CLAMP, LOOP .....	2
35	PAFZZ	95098	12127-1	VALVE, EXPANSION .....	1
36	MFFZZ	67302	12090-119	TUBE, BENT MAKE FROM P/N WW-T-799, .....	1
				1/4 INCH OD .....	
37	PAFZZ	41947	W-2034	ELBOW, TUBE .....	1
38	PAFZZ	96906	MS21919WDF14	CLAMP, LOOP .....	1

SECTION II

TM 9-4120-398-24P

CO2

(1) ITEM NO	(2) SMR CODE	(3) CAGEC	(4) PART NUMBER	(5) DESCRIPTION AND USABLE ON CODES(UOC)	(6) QTY
39	MFFZZ	67302	12090-158	TUBE, BENT MAKE FROM P/N WW-T-799, ..... 1 7/8 INCH OD .....	
40	PAFZZ	41947	W-1037	REDUCER, TUBE .....	1

END OF FIGURE

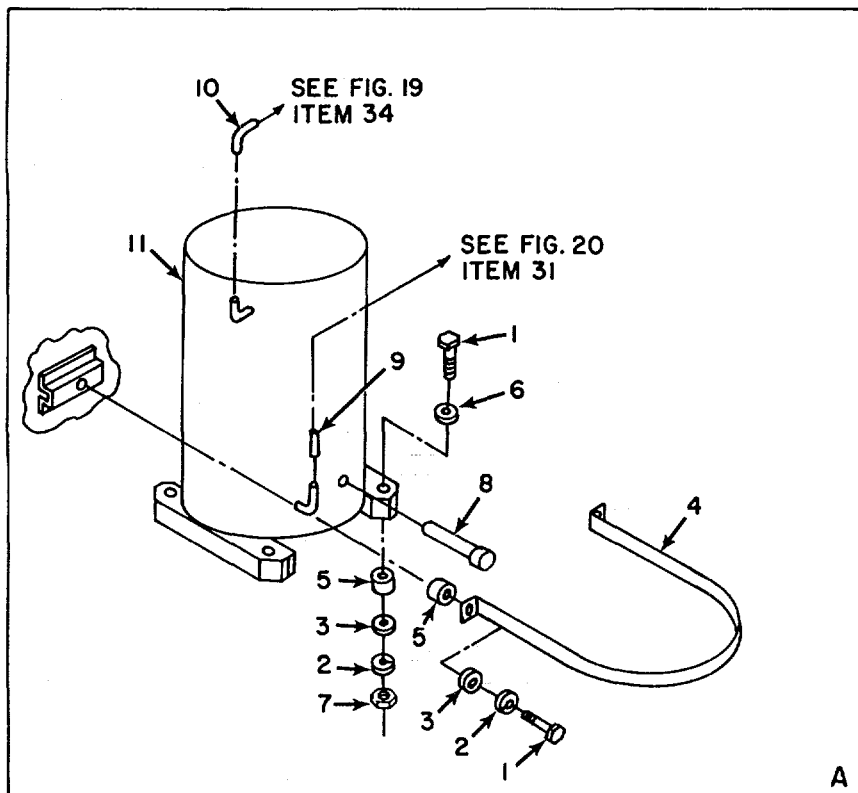
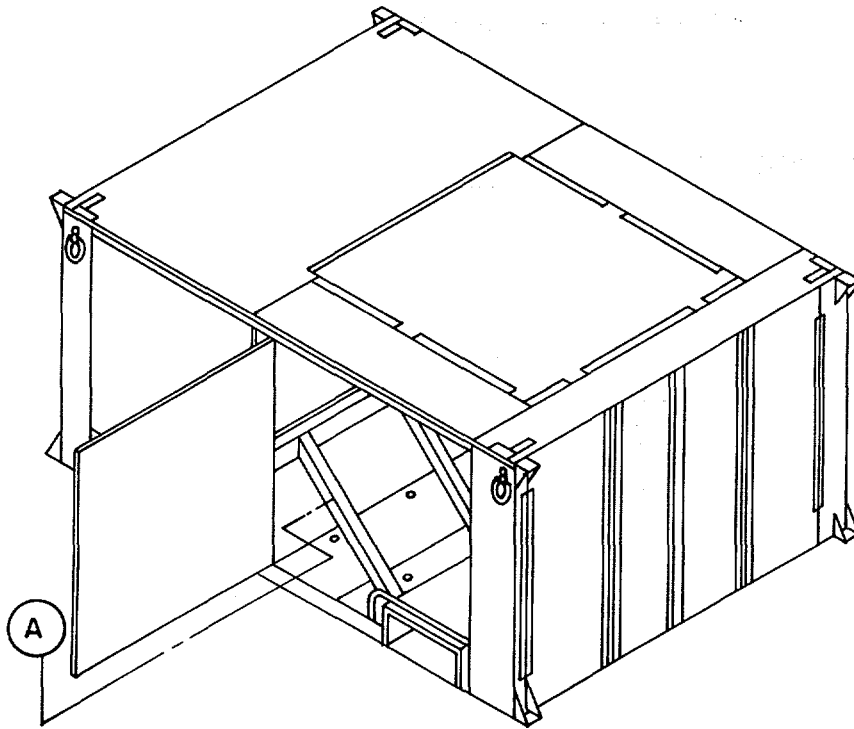


Figure 21. Compressor Installation

SECTION II

TM 9-4120-398-24P  
CO2

(1) ITEM NO	(2) SMR CODE	(3) CAGEC	(4) PART NUMBER	(5) DESCRIPTION AND USABLE ON CODES(UOC)	(6) QTY
<b>GROUP 07            REFRIGERATION SYSTEM</b>					
<b>FIG. 21            COMPRESSOR INSTALLATION</b>					
1	PAFZZ	96906	MS9072841	BOLT, MACHINE .....	6
2	PAFZZ	96906	MS35338-45	WASHER, LOCK .....	6
3	PAFZZ	96906	MS27183-12	WASHER, FLAT .....	6
4	PBFZZ	67302	12137-1	STRAP, COMPRESSOR .....	1
5	XDFZZ	59431	70650-1	GROMMET, NONMETALLIC .....	6
6	PBFZZ	67302	121241	WASHER, FLAT .....	4
7	PBFZZ	96906	MS51967-5	NUT, _PLAIN, HEXAGON .....	4
8	PAFZZ	59431	018-0031-02	HEATER, CRNKCASE HR7 .....	1
9	MFFZZ	67302	12090-171	TUBE, STRAIGHT MAKE FROM P/N WW-T- 799, 3/8 INCH OD .	1
10	PAFZZ	41947	W-2634	ELBOW, TUBE .....	1
11	PAFZZ	14569	CRN5-0500-TF5-270	COMPRESSOR UNIT, REF .....	1

END OF FIGURE

## SECTION II

TM 9-4120-398-24P

(1) ITEM NO	(2) SMR CODE	(3) CAGEC	(4) PART NUMBER	(5) DESCRIPTION AND USABLE ON CODES(UOC)	(6) QTY
				<b>GROUP</b>	<b>BULK MATERIALS</b>
				<b>FIG.</b>	<b>BULK</b>
1	PAOZZ	81349	MIL-R-6130TYPEII GRADEA3/8WDX1/8T	GASKET.....	V
2	PAOZZ	81349	MIL-R-6130TYPEII GRADEA1/2WDX1/8T	GASKET .....	V
3	PAOZZ	81348	HH-I-558TYPEI-II N THK	INSULATION .....	V
4	PAOZZ	81349	MIL-I-16562TYPEM -1/2 IN THK	INSULATION.....	V
5	PAOZZ	81349	MIL-I-16562TYPEM -1 IN THK	INSULATION.....	V
6	PAOZZ	81349	MIL-P-15280 1-1/ 8INIDX3/4WALL	INSULATION.....	V
7	PAOZZ	81349	MIL-P-15280 1-1/ 8INIDX3/8WALL	INSULATION.....	V
8	PAOZZ	81349	MIL-P-15280 1-5/ 8INIDX3/4WALL	INSULATION .....	V
9	PAOZZ	81349	MIL-P-514	PLASTIC SHEET .....	V
10	PAFZZ	81348	WW-T-799TYPELCL2 -1-1/80D	TUBE, COPPER ALLOY .....	V
11	PAFZZ	81348	WW-T-799TYPELCL2 -1/20D	TUBE, COPPER ALLOY .....	V
12	PAFZZ	81348	WW-T-799TYPELCL2 -1/40D	TUBE, COPPER ALLOY .....	V
13	PAFZZ	81348	WW-T-799TYPELCL2 -3/80D	TUBE, COPPER ALLOY .....	V
14	PAFZZ	81348	WW-T-799TYPELCL2 -5/80D	TUBE, COPPER ALLOY .....	V
15	PAFZZ	81348	WW-T-799TYPELCL2 -7/80D	TUBE, COPPER ALLOY .....	V
16	PAOZZ	81349	MIL-W-5086/1	WIRE, ELECTRICAL .....	V
17	PAOZZ	81349	MIL-W-5086/2	WIRE, ELECTRICAL.....	V

END OF FIGURE

BULK-1

**SECTION III**

**NOT APPLICABLE**

CROSS-REFERENCE INDEXES  
NATIONAL STOCK NUMBER INDEX

STOCK NUMBER	FIG.	ITEM	STOCK NUMBER	FIG.	ITEM
5310-00-045-3296	1	4		18	8
	2	2		21	2
	7	13	4130-00-415-9395	19	28
	12	4	5940-00-432-2660	15	5
	18	2	5305-00-432-3755	2	7
	20	16	5305-00-432-4203	8	7
5310-00-045-3299	19	3	5940-00-436-1632	15	6
5305-00-050-1076	16	12	6105-00-531-0563	16	21
5305-00-068-0500	19	8	5945-00-534-7805	14	25
5305-00-068-0501	16	25	5365-00-543-3388	5	1
	19	21		6	1
5305-00-068-0502	16	19	4820-00-545-0936	20	31
	18	12	5310-00-550-1130	14	20
4730-00-068-3362	20	11		19	13
5305-00-071-2509	16	4	5930-00-554-9358	20	13
5310-00-080-6004	16	3	5310-00-559-0070	14	23
5310-00-081-4219	16	11	5325-00-559-7850	20	27
	18	6	5310-00-576-5752	14	43
	21	3	5310-00-579-0079	14	17
4130-00-106-5657	12	8		14	28
5940-00-114-1305	15	11		17	8
5940-00-118-2239	15	3	5310-00-582-5965	7	8
5355-00-126-2790	14	5		16	6
5940-00-143-5284	15	12		17	2
5975-00-152-1144	16	20		18	15
5325-00-174-5316	14	49		19	9
	19	10	5975-00-583-2960	14	53
4730-00-202-9200	20	12	5340-00-598-0146	1	6
5306-00-225-8499	2	9	5930-00-600-7465	14	8
	16	9	5940-00-666-3357	15	10
5306-00-226-4834	21	1	5975-00-682-0306	14	10
4730-00-254-6447	20	37	5310-00-761-6882	16	5
5325-00-263-6651	1	1		17	1
	14	50		18	14
5325-00-270-8890	14	51	6680-00-777-9797	20	25
5940-00-276-0678	14	13	5325-00-803-5773	4	4
5340-00-302-1415	12	14		8	2
5340-00-351-4085	20	38	5310-00-809-4058	16	7
5325-00-369-2721	5	4		17	3
	6	4		18	13
	8	3		19	12
5310-00-395-2998	2	12	5310-00-809-8546	1	5
5310-00-407-9566	2	10		2	3
	16	10		7	14
	17	15		8	8

CROSS-REFERENCE INDEXES  
NATIONAL STOCK NUMBER INDEX

STOCK NUMBER	FIG.	ITEM	STOCK NUMBER	FIG.	ITEM
	12	6	5325-00-970-2417	19	32
	18	3	5310-00-984-0388	5	3
	20	17		6	3
5310-00-811-3494	9	6	5305-00-984-4983	14	37
4730-00-813-3193	20	20	5305-00-984-4992	14	26
4730-00-815-5681	20	29		17	6
4730-00-818-7484	21	10	5305-00-984-6192	14	22
5340-00-826-3969	20	34		19	1
5940-00-833-1705	15	14	5305-00-984-6193	9	5
4720-00-845-3032	13	1	5305-00-984-6206	14	4
5320-00-850-3247	5	5		17	4
	6	5	5305-00-984-6208	14	46
5340-00-869-9954	2	11	5305-00-984-6210	2	1
5320-00-879-4473	1	9		4	1
	2	13		7	12
	5	16		12	5
	6	11		17	14
	7	10	5305-00-984-6211	1	2
	7	16		3	1
	7	19		18	1
	8	4		20	15
	12	1	5305-00-984-6214	7	1
	12	9		11	3
	14	55		14	1
5310-00-880-7744	18	7	5305-00-984-6215	14	41
	21	7	5305-00-988-1724	7	7
4730-00-913-0766	13	2	5305-00-989-7434	11	1
4130-00-922-2439	12	7	4730-00-995-9667	20	40
5340-00-923-1195	1	8	5310-00-997-1888	14	19
5310-00-934-9747	14	16	4010-01-003-4319	2	6
	14	27	4730-01-009-9052	20	8
5310-00-934-9751	1	7	5975-01-017-5681	18	9
5310-00-934-9757	14	24	5940-01-063-9908	14	39
	19	4	5306-01-075-8519	18	5
5310-00-934-9758	1	3	5355-01-156-9476	14	7
	12	3	5945-01-161-8124	14	44
	14	42	5940-01-305-6502	14	36
	17	16		17	12
	20	22	5365-01-305-7009	16	22
5340-00-935-8885	19	2			
4820-00-936-2235	19	35			
	20	10			
4730-00-958-8908	19	36			



## CROSS-REFERENCE INDEXES

## PART NUMBER INDEX

CAGEC	PART NUMBER	STOCK NUMBER	FIG.	ITEM
41947	A-3494	4730-00-202-9200	20	12
07707	AD42BS		16	27
98410	C-2198-10X		15	15
82656	CRNS-0500-TFS-27 0		21	11
22038	CT56-24-22		18	10
66295	C256-FS		10	2
			10	8
78553	C27091-014-4		20	1
78553	C9030-102-1		8	10
70255	EK-305-9		20	19
98313	FDK-2850M1	5340-00-869-9954	2	11
16632	FLX1501-0003		10	9
16632	FLX1501-0004		10	3
59730	FTA-250	5940-00-276-0678	14	13
81349	HH-I-558TYPEI-II N		1	12
81348	HH-I-558TYPEI-II N THK		BULK	3
79470	H10008	4720-00-845-3032	13	1
30327	KFO8-04PS	4730-00-913-0766	13	2
75382	KT46		14	31
75382	KT47		14	32
75382	KT48		14	33
			17	11
75382	KT50		14	34
75382	KT52		14	35
79382	KT53		17	10
81349	MIL-I-16562TYPEM -1 IN THK		BULK	5
81349	MIL-I-16562TYPEM -1/2 IN THK		BULK	4
81349	MIL-I-16562TYPEM -1/21N		1	14
81349	MIL-I-16562TYPEM -1IN		1	13
81349	MIL-P-15280 1-1/ 8INIDX3/4WALL		BULK	6
81349	MIL-P-15280 1-1/ 8INIDX3/8WALL		BULK	7
81349	MIL-P-15280 1-5/ 8INIDX3/4WALL		BULK	8
81349	MIL-P-514		BULK	9
81349	MIL-R-6130TYPEII GRADEAI/2WDX1/8T		BULK	2
81349	MIL-R-6130TYPEII GRADEA3/8WDX1/8T		BULK	1
81349	MIL-W-5086/1		BULK	16
81349	MIL-W-5086/2		BULK	17
96906	MS20257-C2-2300		6	7
96906	MS20257C2-2300		5	7
96906	MS20613-8PG		10	5

## CROSS-REFERENCE INDEXES

## PART NUMBER INDEX

CAGEC	PART NUMBER	STOCK NUMBER	FIG.	ITEM
96906	MS20613-8PG		10	11
96906	MS20613-8P6		16	15
96906	MS21044-N08	5310-00-811-3494	9	6
96906	MS21322-32	5340-00-935-8885	19	2
96906	MS21322-41	5340-00-923-1195	1	8
96906	MS21919WDF14	5340-00-351-4085	20	38
96906	MS21919WDF18	5340-00-826-3969	20	34
96906	MS21919WDG6	5340-00-598-0146	1	6
96906	MS25036-115	5940-00-143-5284	15	12
96906	MS25036-116	5940-00-114-1305	15	11
96906	MS271 3053		20	4
96906	MS27183-5		9	4
96906	MS27183-10	5310-00-809-4058	16	7
			17	3
			18	13
			19	12
96906	MS27183-12	5310-00-081-4219	16	11
			18	6
			21	3
96906	MS27183-14	5310-00-080-6004	16	3
96906	MS27183-8	5310-00-809-8546	1	5
			2	3
			7	14
			8	8
			12	6
			18	3
			20	17
96906	MS35206-226	5305-00-984-4983	14	37
96906	MS35206-232	5305-00-984-4992	14	26
			17	6
96906	MS35206-244	5305-00-984-6192	14	22
			19	1
96906	MS35206-245	5305-00-984-6193	9	5
96906	MS35206-259	5305-00-984-6206	14	4
			17	4
96906	MS35206-261	5305-00-984-6208	14	46
96906	MS35206-263	5305-00-984-6210	2	1
			4	1
			7	12
			12	5
			17	14
96906	MS35206-264	5305-00-984-6211	1	2
			3	1
			18	1
			20	15
96906	MS35206-267	5305-00-984-6214	7	1
			11	3
			14	1
96906	MS35206-268	5305-00-984-6215	14	41

CROSS-REFERENCE INDEXES

CAGEC	PART NUMBER	PART NUMBER INDEX		FIG.	ITEM
			STOCK NUMBER		
96906	MS35206-280		5305-00-988-1724	7	7
96906	MS35207-263		5305-00-989-7434	11	1

## CROSS-REFERENCE INDEXES

## PART NUMBER INDEX

CAGEC	PART NUMBER	STOCK NUMBER	FIG.	ITEM
96906	MS35333-37	5310-00-579-0079	14	17
			14	28
			17	8
96906	MS35333-38	5310-00-559-0070	14	23
96906	MS35333-39	5310-00-576-5752	14	43
96906	MS35333-40	5310-00-550-1130	14	20
			19	13
96906	MS35338-42	5310-00-045-3299	19	3
96906	MS35338-43	5310-00-045-3296	1	4
			2	2
			7	13
			12	4
			18	2
			20	16
96906	MS35338-44	5310-00-582-5965	7	8
			16	6
			17	2
			18	15
96906	MS35338-45	5310-00-407-9566	19	9
			2	10
			16	10
			17	15
			18	8
96906	MS35338-46	5310-00-407-9566	21	2
			16	2
			19	27
96906	MS35489-12	5325-00-263-6651	1	1
81349	MS35489-2	5325-00-174-5316	14	50
			19	10
96906	MS35489-22	5325-00-270-8890	14	49
96906	MS35649-202	5310-00-934-9758	19	10
			14	51
			1	3
			12	3
			14	42
96906	MS35649-262	5310-00-934-9747	17	16
			20	22
			14	27
96906	MS35649-282	5310-00-934-9757	14	16
			14	27
96906	MS35649-2252	5310-00-997-1888	14	19
			19	4
96906	MS35649-260	5310-00-934-9751	1	7
96906	MS39255-A35	5310-00-934-9751	16	17
96906	MS51861-47	5305-00-432-4203	8	7
96906	MS51967-2	5310-00-761-6882	16	5
			17	1
			18	14
96906	MS51967-5	5310-00-880-7744	18	7
96906	MS51967-8	5310-00-880-7744	21	7
			16	1

## CROSS-REFERENCE INDEXES

CAGEC	PART NUMBER	PART NUMBER INDEX		FIG.	ITEM
			STOCK NUMBER		
96906	MS51967-8			19	26
96906	MS90725-3		5305-00-068-0500	19	8
96906	MS90725-34		5306-00-225-8499	2	9
				16	9
96906	MS90725-36		5306-01-075-8519	18	5
96906	MS90725-5		5305-00-068-0501	16	25
				19	21
96906	MS90725-6		5305-00-068-0502	16	19
				18	12
96906	MS90725-89		5305-00-050-1076	16	12
96906	MS90728-12		5305-00-071-2509	16	4
96906	MS90728-159		5305-00-432-3755	2	7
96906	MS90728-41		5306-00-226-4834	21	1
81349	M50861 -12-9			15	4
81349	M5086/1-18-9			15	8
81349	M5086/2-10-9			15	2
				15	16
81349	M5086/2-8-9			15	13
80205	NAS1090-2			2	5
97539	NC-3030		5975-00-682-0306	14	10
59730	RAD-1 87			15	9
59730	RA1123		5940-00-666-3357	15	10
59730	RA1153			15	7
59730	RA257		5940-00-436-1632	15	6
86797	RB-75		5355-00-126-2790	14	5
86797	RC-175		5355-01-156-9476	14	7
59730	RC1123		5940-00-118-2239	15	3
59730	RC1153			15	1
59730	RC257		5940-00-432-2660	15	5
81349	RR-C-271		4010-01-003-4319	2	6
07707	SD42BS		5320-00-879-4473	1	9
				2	13
				5	16
				6	11
				7	10
				7	16
				7	19
				8	4
				12	1
				12	9
				14	55
07707	SD43BS			9	3
07707	SD62BS		5320-00-850-3247	5	5
				6	5
76871	SN2716		5310-00-395-2998	2	12
60969	SP3302		5975-00-152-1144	16	20
78189	TEKS-0608KW			3	7

CROSS-REFERENCE INDEXES

CAGEC	PART NUMBER	PART NUMBER INDEX		FIG.	ITEM
			STOCK NUMBER		
07295	VUS3-46AC		4820-00-936-2235	19	35
				20	10
41947	W-1037		4730-00-995-9667	20	40

## CROSS-REFERENCE INDEXES

CAGEC	PART NUMBER	PART NUMBER INDEX		FIG.	ITEM
			STOCK NUMBER		
41947	W-1049		4730-00-958-8908	19	36
41947	W-2034		4730-00-254-6447	20	37
41947	W-2612		4730-00-068-3362	20	11
41947	W-2634		4730-00-818-7484	21	10
41947	W-2722			20	26
41947	W-2822		4730-00-813-3193	20	20
41947	W-4011		4730-00-815-5681	20	29
81348	WW-T-799TYPELCL2-1-1/80D			BULK	10
81348	WW-T-799TYPELCL2-1/20D			BULK	11
81348	WW-T-799TYPELCL2-1/40D			BULK	12
81348	WW-T-799TYPELCL2-3/80D			BULK	13
81348	WW-T-799TYPELCL2-5t80D			BULK	14
81348	WW-T-799TYPELCL2-7/80D			BULK	15
41947	W1514		4730-01-009-9052	20	8
75282	ZX-8		5975-01-017-5681	18	9
59431	018-0031-02			21	8
67302	1/40DXO.30WALL			19	37
14829	1110		5325-00-970-2417	19	32
67302	12001-100			12	2
67302	12005-1			12	13
67302	12005-100			12	10
67302	12005-2			12	11
67302	12005-3			12	12
67302	12006-100			10	7
67302	12006-101			10	1
67302	12007-1			19	25
67302	12008-1			20	18
67302	12012-101			18	4
67302	12013-1			16	8
67302	120141			17	17
67302	12015-10			6	10
67302	12015-101			6	6
67302	12015-11			6	8
67302	12015-4			6	9
67302	12016-100			5	6
67302	12016-14			5	15
67302	12016-15			5	13
67302	12016-16			5	14
67302	12016-17			5	11
67302	12016-18			5	10
67302	12016-19			5	12
67302	12016-7			5	8
67302	12016-8			5	9
67302	12017-100			18	16
67302	12018-100			8	9
67302	12019-101			18	17

## CROSS-REFERENCE INDEXES

CAGEC	PART NUMBER	PART NUMBER INDEX		FIG.	ITEM
			STOCK NUMBER		
67302	12020-1			19	20
67302	12022-1			20	5
67302	12022-100			20	3
67302	12026-100			14	54
67302	12035-100			12	15
67302	12036-1			19	5
67302	12037-100			16	13
67302	12038-100			16	14
67302	12038-2			16	16
67302	12040-102			1	11
67302	12041-6			2	14
67302	12043-101			7	15
67302	12045-1			7	6
67302	12045-100			7	2
67302	12045-2			7	5
67302	12045-3			7	4
67302	12045-4			7	3
67302	12047-101			7	18
67302	12050-100			17	9
67302	12051-101			19	6
67302	12052-10			4	8
67302	12052-103			4	2
67302	12052-4			4	6
67302	12052-9			4	7
67302	12053-100			14	48
67302	12054-100			19	29
67302	12055-1			3	6
67302	12055-100			3	2
67302	12055-2			3	3
67302	12055-4			3	4
67302	12055-5			3	5
67302	12056-100			11	4
67302	12054-4			11	5
67302	12056-7			11	8
67302	12056-8			11	6
67302	12056-9			11	7
67302	12057-1			11	2
67302	12058-100			11	9
67302	12058-4			11	10
67302	12058-7			11	11
67302	12058-9			11	12
67302	12059-100			17	19
67302	12060-100			16	29
67302	1Z061-100			16	26
67302	12061-3			16	28
67302	12062-100			16	30
67302	12063-101			17	21
67302	12064-100			3	8
67302	12064-2			3	9
67302	12070-101			7	9
67302	12071-100			19	22



## CROSS-REFERENCE INDEXES

CAGEC	PART NUMBER	PART NUMBER INDEX		FIG.	ITEM
			STOCK NUMBER		
67302	12072-1			17	5
67302	12073-102			1	15
67302	120741			14	15
67302	12075-101			2	4
67302	12075-6			2	8
67302	12076-100			19	15
67302	12077-100			19	16
67302	12078-100			19	19
67302	12079-100			19	17
67302	12080-100			19	18
67302	12081-100			149	11
67302	12082-104			14	2
67302	12083-101			14	21
67302	12084-100			14	6
67302	12088-100			10	10
67302	12088-3			10	12
67302	12089-100			10	4
67302	12089-3			10	6
67302	12090-106			19	24
67302	12090-110			20	6
67302	12090-112			20	14
67302	12090-113			20	21
67302	12090-114			20	28
67302	12090-115			20	33
67302	12090-116			20	30
67302	12090-117			20	32
67302	12090-119			20	36
67302	12090-120			19	23
67302	12090-121			19	33
67302	12090-122			19	30
67302	12090-158			20	39
67302	12090-163			19	34
67302	12090-171			21	9
61501	12090-34			13	4
67302	12091-1			20	23
67302	12092-1			20	24
67302	12097-4			4	9
67302	12098-4			4	120
71956	121022			16	23
71956	121027			16	24
67302	12103-100			14	30
67302	12108-1			14	18
67302	12110-1			14	47
67302	12111-1			14	40
67302	12112-1			14	38
67302	12115-1			19	7

## CROSS-REFERENCE INDEXES

CAGEC	PART NUMBER	PART NUMBER INDEX		FIG.	ITEM
			STOCK NUMBER		
67302	12116-1			17	18
71956	121162		5365-01-305-7009	16	22
67302	12118-1			10	13
67302	12119-1			1	10
67302	12120-1			14	14
67302	12121-100			19	14
67302	121241			21	6
67302	12125-1			20	7
67302	12126-1			19	31
95098	12127-1			20	35
67302	12134100			9	2
67302	12135-10			8	6
67302	12135-100			8	5
67302	12136-100			9	7
67302	12137-1			21	4
67302	12138-1			14	45
67302	12139-100			14	3
97403	13211 E8191		5340-00-302-1415	12	14
97403	13211 E8305		4130-00-922-2439	12	7
97403	13211E8322		4130-00-106-5657	12	8
97403	13229E6147			20	2
97403	13229E7158			2	15
67302	1408TS			9	1
59730	144			14	52
73803	20PS002BB450K375K		5930-00-554-9358	20	13
28520	2119			17	20
71286	244-16			5	17
				6	12
				14	53
				14	56
71286	244-16C			7	11
				7	17
				7	20
97539	2500/1/6			14	11
59730	2559		5975-00-583-2960	14	53
14604	30D0-303SV		5945-00-534-7805	14	25
97403	318ODXO.60WALL			13	5
82121	32303AS		5930-00-600-7465	14	8
21340	3260620		5940-00-833-1705	15	14
91494	328VA70328-048		4820-00-545-0936	20	31
98410	33-8141			17	13
97765	3832		4130-00-415-9395	19	28
99017	4			13	3
71286	40G26-1		5365-00-543-3388	5	1
				6	1
71286	4002-NS			4	5
			5325-00-369-2721	5	4
				6	4
				8	3

CROSS-REFERENCE INDEXES

CAGEC	PART NUMBER	PART NUMBER INDEX		FIG.	ITEM
			STOCK NUMBER		
71286	4002-SW-SS		5310-00-9840388	5	3
				6	3
71286	4002-28S			5	2
				6	2
71286	4002-8S		5325-00-803-5773	4	4

## CROSS-REFERENCE INDEXES

CAGEC	PART NUMBER	PART NUMBER INDEX		FIG.	ITEM
			STOCK NUMBER		
71286	4002-8S		5325-00-803-5773	8	2
71286	40626-1			4	3
				8	1
23826	41NB30AF-X26		5945-01-161-8124	14	44
06402	45-700-IGI-P10-5 AMP			14	12
58553	50-10S		6680-00-777-9797	20	25
14829	560		5325-00-559-7850	20	27
75382	600RJ3			14	9
92940	601995			18	11
92940	601996		6105-00-531-0563	16	21
75382	603-5-F			14	29
00779	61045-1		5940-01-063-9908	14	39
59431	70650-1			21	5
71956	8400			16	18
83330	899-10-F		5940-01-305-6502	14	36
83330	899-10F		5940-01-305-6502	17	12
58553	92-180			20	9

## CROSS-REFERENCE INDEXES

## FIGURE AND ITEM NUMBER INDEX

FIG.	ITEM	STOCK NUMBER	CAGEC	PART NUMBER
BULK	1		81349	MIL-R-6130TYPEII GRADEA3/8WDX1/8T
BULK	2		81349	MIL-R-6130TYPEII GRADEA1/2WDX1/8T
BULK	3		81348	HH-I-558TYPEI-II N THK
BULK	4		81349	MIL-I-16562TYPEM -1/2 IN THK
-BULK	5		81349	MIL-I-16562TYPEM -1 IN THK
BULK	6		81349	MIL-P-15280 1-1/ 8INIDX3/4WALL
BULK	7		81349	MIL-P-15280 1-1/ 8INIDX3/8WALL
BULK	8		81349	MIL-P-15280 1-5/ 8INIDX3/4WALL
BULK	9		81349	MIL-P-514
BULK	10		81348	WW-T-799TYPELCL2 -1-1/80D
BULK	11		81348	WW-T-799TYPELCL2 -1/20D
BULK	12		81348	WW-T-799TYPELCL2 -1/40D
BULK	13		81348	WW-T-799TYPELCL2 -3/80D
BULK	14		81348	WW-T-799TYPELCL2 -5/80D
BULK	15		81348	WW-T-799TYPELCL2 -7/80D
BULK	16		81349	MIL-W-5086/1
BULK	17		81349	MIL-W-5086/2
1	1	5325-00-263-6651	96906	MS35489-12
1	2	5305-00-984-6211	96906	MS35206-264
1	3	5310-00-934-9758	96906	MS35649-2O2
1	4	5310-00-045-3296	96906	MS35338-43
1	5	5310-00-809-8546	96906	MS27183-8
1	6	5340-00-598-0146	96906	MS21919WDG6
1	7	5310-00-934-9751	96906	MS35650-302
1	8	5340-00-923-1195	96906	MS21322-41
1	9	5320-00-879-4473	07707	SD42BS
1	10		67302	12119-1
1	11		67302	12040-102
1	12		81349	HH-I-558TYPE1-II N
1	13		81349	MIL-1I-16562TYPEM -1IN
1	14		81349	MIL-I-16562TYPEM -1/21N
1	15		67302	12073-102
2	1	5305-00-984-6210	96906	MS35206-263
2	2	5310-00-045-3296	96906	MS35338-43

## CROSS-REFERENCE INDEXES

## FIGURE AND ITEM NUMBER INDEX

FIG.	ITEM	STOCK NUMBER	CAGEC	PART NUMBER
2	3	5310-00-809-8546	96906	MS27183-8
2	4		67302	12075-101
2	5		80205	NAS1090-2
2	6	4010-01-003-4319	81349	RR-C-271
2	7	5305-00-432-3755	96906	MS90728-159
2	8		67302	12075-6
2	9	5306-00-225-8499	96906	MS90725-34
2	10	5310-00-407-9566	96906	MS35338-45-
2	11	5340-00-869-9954	98313	FDK-2850M1
2	12	5310-00-395-2998	76871	SN2716
2	13	5320-00-879-4473	07707	SD42BS
2	14		67302	12041-6
2	15		97403	13229E7158
3	1	5305-00-984-6211	96906	MS35206-264
3	2		67302	12055-100
3	3		67302	12055-2
3	4		67302	12055-4
3	5		67302	12055-5
3	6		67302	12055-1
3	7		78189	TEKS-0608KW
3	8		67302	12064-100
3	9		67302	12064-2
4	1	5305-00-984-6210	96906	MS35206-263
4	2		67302	12052-103
4	3		71286	40626-1
4	4	5325-00-803-5773	71286	4002-8S
4	5		71286	4002-NS
4	6		67302	12052-4
4	7		67302	12052-9
4	8		67302	12052-10
4	9		67302	12097-4
4	10		67302	12098-4
5	1	5365-00-543-3388	71286	40G26-1
5	2		71286	4002-28S
5	3	5310-00-984-0388	71286	4002-SW-SS
5	4	5325-00-369-2721	71286	4002-NS
5	5	5320-00-850-3247	07707	SD62BS
5	6		67302	12016-100
5	7		96906	MS20257C2-2300
5	8		67302	12016-7
5	9		67302	12016-8
5	10		67302	12016-18
5	11		67302	12016-17
5	12		67302	12016-19
5	13		67302	12016-15
5	14		67302	12016-16
5	15		67302	12016-14
5	16	5320-00-879-4473	07707	SD42BS
5	17		71286	244-16
6	1	5365-00-543-3388	71286	40G26-1
6	2		71286	4002-28S

## CROSS-REFERENCE INDEXES

## FIGURE AND ITEM NUMBER INDEX

FIG.	ITEM	STOCK NUMBER	CAGEC	PART NUMBER
6	3	5310-00-984-0388	71286	4002-SW-SS
6	4	5325-00-369-2721	71286	4002-NS
6	5	5320-00-850-3247	07707	SD62BS
6	6		67302	12015-01 o
6	7		96906	MS20257-C2-2300
6	8		67302	12015-11
6	9		67302	12015-4
6	10		67302	12015-10
6	11	5320-00-879-4473	07707	SD42BS
6	12		71286	244-16
7	1	5305-00-984-6214	96906	MS35206-267
7	2		67302	12045-100
7	3		67302	12045-4
7	4		67302	12045-3
7	5		67302	12045-2
7	6		67302	12045-1
7	7	5305-00-988-1724	96906	MS35206-280
7	8	5310-00-582-5965	96906	MS35338-44
7	9		67302	12070-101
7	10	5320-00-879-4473	07707	SD42BS
7	11		71286	244-16C
7	12	5305-00-984-6210.	96906	MS35206-263
7	13	5310-00-045-3296	96906	MS35338-43
7	14	5310-00-809-8546	96906	MS27183-8
7	15		67302	12043-101
7	16	5320-00-879-4473	07707	SD42BS
7	17		71286	244-16C
7	18		67302	12047-101
7	19	5320-00-879-4473	07707	SD42BS
7	20		71286	244-16C
8	1		71286	40626-1
8	2	5325-00-803-5773	71286	4002-8S
8	3	5325-00-369-2721	71286	4002-NS
8	4	5320-00-879-4473	07707	SD42BS
8	5		67302	12135-100
8	6		67302	12135-10
8	7	5305-00-432-4203	96906	MS51861-47
8	8	5310-00-809-8546	96906	MS27183-8
8	9		67302	12018-100
8	10		78553	C9030-102-1
9	1		67302	1408TS
9	2		67302	12134-100
9	3		07707	SD43BS
9	4		96906	MS27183-5
9	5	5305-00-984-6193	96906	M 35206-245
9	6	5310-00-811-3494	96906	MS21044N08
9	7		67302	12136-100
10	1		67302	12006-101

CROSS-REFERENCE INDEXES

FIGURE AND ITEM NUMBER INDEX

FIG.	ITEM	STOCK NUMBER	CAGEC	PART NUMBER
10	2		66295	C256-FS
10	3		16632	FLX1501-0004
10	4		67302	12089-100



## CROSS-REFERENCE INDEXES

## FIGURE AND ITEM NUMBER INDEX

FIG.	ITEM	STOCK NUMBER	CAGEC	PART NUMBER
10	5		96906	MS20613-8PG
10	6		67302	12089-3
10	7		67302	12006-100
10	8		66295	C256-FS
10	9		16632	FLX1501-0003
10	10		67302	12088-100
10	11		96906	MS20613-8PG
10	12		67302	12088-3
10	13		67302	12118-1
11	1	5305-00-989-7434	96906	MS35207-263
11	2		67302	12057-1
11	3	5305-00-984-6214	96906	NMS35206-267
11	4		67302	12056-100
11	5		67302	12056-4
11	6		67302	12056-8
11	7		67302	12056-9
11	8		67302	12056-7
11	9		67302	12058-100
11	10		67302	12058-4
11	11		67302	12058-7
11	12		67302	12058-9
12	1	5320-00-879-4473	07707	SD42BS
12	2		67302	12001-100
12	3	5310-00-934-9758	96906	MS35649-202
12	4	5310-00-045-3296	96906	MS35338-43
12	5	5305-00-984-6210	96906	MS35206-263
12	6	5310-00-809-8546	96906	MS27183-8
12	7	4130-00-922-2439	97403	13211E8305
12	8	4130-00-106-5657	97403	13211E8322
12	9	5320-00-879-4473	07707	SD42BS
12	10		67302	12005-100
12	11		67302	12005-2
12	12		67302	12005-3
12	13		67302	12005-1
12	14	5340-00-302-1415	97403	13211E8191
12	15		67302	12035-100
13	1	4720-00-845-3032	79470	H10008
13	2	4730-00-913-0766	30327	KFO8-04PS
13	3		99017	4
13	4		61501	12090-34
13	5		97403	3/80DXO.60WALL
14	1	5305-00-984-6214	96906	MS35206-267
14	2		67302	12082-104
14	3		67302	12139-100
14	4	5305-00-984-6206	96906	MS35206-259
14	5	5355-00-126-2790	86797	RB-75
14	6		67302	12084-100
14	7	5355-01-156-9476	86797	RC-175
14	8	5930-00-600-7465	82121	32303AS
14	9		75382	600RJ3
14	10	5975-00-682-0306	97539	NC-3030

## CROSS-REFERENCE INDEXES

## FIGURE AND ITEM NUMBER INDEX

FIG.	ITEM	STOCK NUMBER	CAGEC	PART NUMBER
14	11		97539	2500/1/6
14	12		06402	45-700-1G1-P10-5 AMP
14	13	5940-00-276-0678	59730	FTA-250
14	14		67302	12120-1
14	15		67302	12074-1
14	16	5310-00-934-9747	96906	MS35649-262
14	17	5310-00-579-0079	96906	MS35333-37
14	18		67320	12108-1
14	19	5310-00-997-1888	96906	MS35649-2252
14	20	5310-00-550-1130	96906	MS35333-40
14	21		67302	12083-101
14	22	5305-00-984-6192	96902	MS35206-244
14	23	5310-00-559-0070	96902	MS35333-38
14	24	5310-00-934-9757	96906	MS35649-282
14	25	5945-00-534-7805	14604	30DO303SV
14	26	5305-00-984-4992	96906	MS35206-232
14	27	5310-00-934-9747	96906	MS35649-262
14	28	5310-00-579-0079	96906	MS35333-37
14	29		75382	603-5-F
14	30		67302	12103-100
14	31		75382	KT46
14	32		75382	KT47
14	33		75382	KT48
14	34		75382	KT50
14	35		75382	KT52
14	36	5940-01-305-6502	83330	899-10-F
14	37	5305-00-984-4983	96906	MS35206-226
14	38		67302	12112-1
14	39	5940-01-063-9908	00779	61045-1
14	40		67302	12111-1
14	41	5305-00-984-6215	96906	MS35206-268
14	42	5310-00-934-9758	96906	MS35649-202
14	43	5310-00-576-5752	96906	MS35333-39
14	44	5945-01-161-8124	23826	41NB30AF-X26
14	45		67302	12138-1
14	46	5305-00-984-6208	96906	MS35206-261
14	47		67302	12110-1
14	48		67302	12053-100
14	49	5325-00-174-5316	81349	MS35489-2
14	50	5325-00-263-6651	96906	MS35489-12
14	51	5325-00-270-8890	96906	MS35489-22
14	52		59730	144
14	53	5975-00-583-2960	59730	2559
14	54		67302	12026-100
14	55	5320-00-879-4473	07707	SD42BS
14	56		71286	244-16
15	1		59730	RC1153
15	2		81349	M5086/2-10-9
15	3	5940-00-118-2239	59730	RC1123

## CROSS-REFERENCE INDEXES

## FIGURE AND ITEM NUMBER INDEX

FIG.	ITEM	STOCK NUMBER	CAGEC	PART NUMBER
15	4		81349	M5086/1-12-9
15	5	5940-00-432-2660	59730	RC257
15	6	5940-00-436-1632	59730	RA257
15	7		59730	RA1153
15	8		81349	M5086/1-18-9
15	9		59730	RAD-187
15	10	5940-00-666-3357	59730	RA1123
15	11	5940-00-114-1305	96906	MS25036-116
15	12	5940-00-143-5284	96906	MS25036-115
15	13		81349	M5086/2-8-9
15	14	5940-00-833-1705	21340	3260620
15	is		98410	C-2198-10X
15	16		81349	M5086/2-10-9
16	1		96906	MS51967-8
16	2		96906	MS35338-46
16	3	5310-00-080-6004	96906	MS27183-14
16	4	5305-00-071-2509	96906	MS90728-12
16	5	5310-00-761-6882	96906	MS51967-2
16	6	5310-00-582-5965	96906	MS35338-44
16	7	5310-00-809-4058	96906	MS27183-10
16	8		67302	12013-1
16	9	5306-00-225-8499	96906	MS90725-34
16	10	5310-00-407-9566	96906	MS35338-45
16	11	5310-00-081-4219	96906	MS27183-12
16	12	5305-00-050-1076	96906	MS90725-89
16	13		67302	12037-100
16	14		67302	12038-100
16	15		96906	MS20613-8P6
16	16		67302	12038-2
16	17		96906	MS39255-A35
16	18		71956	8400
16	19	5305-00-068-0502	96906	MS90725-6
16	20	5975-00-152-1144	60969	SP3302
16	21	6105-00-531-0563	92940	601996
16	22	5365-01-305-7009	71956	121162
16	23		71956	121022
16	24		71956	121027
16	25	5305-00-068-0501	96906	MS90725-5
16	26		67302	12061-100
16	27		07707	AD42BS
16	28		67302	12061-3
16	29		67302	12060-100
16	30		67302	12062-100
17	1	5310-00-761-6882	96906	MS51967-2
17	2	5310-00-582-5965	96906	MS35338-44
17	3	5310-00-809-4058	96906	MS27183-10
17	4	5305-00-984-6206	96906	MS35206-259
17	5		67302	12072-1
17	6	5305-00-984-4992	96906	MS35206-232
17	7		96906	MS35649-260
17	8	5310-00-579-0079	96906	MS35333-37

## CROSS-REFERENCE INDEXES

## FIGURE AND ITEM NUMBER INDEX

FIG.	ITEM	STOCK NUMBER	CAGEC	PART NUMBER
17	9		67302	12050-100
17	10		79382	KT53
17	11		75382	KT48
17	12	5940-01-305-6502	83330	899-10F
17	13		98410	33-8141
17	14	5305-00-984-6210	96906	MS35206-263
17	15	5310-00-407-9566	96906	MS35338-45
17	16	5310-00-934-9758	96906	MS35649-202
17	17		67302	120141
17	18		67302	12116-1
17	19		67302	12059-100
17	20		28520	2119
17	21		67302	12063-101
18	1	5305-00-984-6211	96906	MS35206-264
18	2	5310-00-045-3296	96906	MS35338-43
18	3	5310-0080908546	96906	MS27183-8
18	4		67302	12012-101
18	5	5306-01-075-8519	96906	MS90725-36
18	6	5310-00-081-4219	96906	MS27183-12
18	7	5310-00-880-7744	96906	MS51967-5
18	8	5310-00-407-9566	96906	MS35338-45
18	9	5975-01-017-5681	75282	ZX-8
18	10		22038	CT56-24-22
18	11		92940	601995-
18	12	5305-00-068-0502	96906	MS90725-6
18	13	5310-00-809-4058	96906	MS27183-10
18	14	5310-00-761-6882	96906	MS51967-2
18	15	5310-00-582-5965	96906	MS35338-44
18	16		67302	12017-100
18	17		67302	12019-101
19	1	5305-00-984-6192	96906	MS35206-244
19	2	5340-00-935-8885	96906	MS21322-32
19	3	5310-00-045-3299	96906	MS35338-42
19	4	5310-00-934-9757	96906	MS35649-282
19	5		67302	12036-1
19	6		67302	12051-101
19	7		67302	12115-1
19	8	5305-00-068-0500	96906	MS90725-3
19	9	5310-00-582-5965	96906	MS35338-44
19	10	5325-00-174-5316	81349	MS35489-2
19	11		67302	12081-100
19	12	5310-00-809-4058	96906	MS27183-10
19	13	5310-00-550-1130	96906	MS35333-40
19	14		67302	12121-100
19	15		67302	12076-100
19	16		67302	12077-100
19	17		67302	12079-100

CROSS-REFERENCE INDEXES

FIGURE AND ITEM NUMBER INDEX

FIG.	ITEM	STOCK NUMBER	CAGEC	PART NUMBER
19	18		67302	12080-100
19	19		67302	12078-100
19	20		67302	12020-1
19	21	5305-00-068-0501	96906	MS90725-5

## CROSS-REFERENCE INDEXES

## FIGURE AND ITEM NUMBER INDEX

FIG.	ITEM	STOCK NUMBER	CAGEC	PART NUMBER
19	22		67302	12071-100
19	23		67302	12090-120
19	24		67302	12090-106
19	25		67302	12007-1
19	26		96906	MS51967-8
19	27		96906	MS35338-46
19	28	4130-00-415-9395	97765	3832
19	29		67302	12054-100
19	30		67302	12090-122
19	31		67302	12126-1
19	32	5325-00-970-2417	14829	1110
19	33		67302	12090-121
19	34		67302	12090-163
19	35	4820-00-936-2235	07295	VUS3-46A,C
19	36	4730-00-958-8908	41947	W-1049
19	37		67302	1/40DXO.30WALL
20	1		78553	C27091-014-4
20	2		97403	13229E6147
20	3		67302	12022-100
20	4		96906	MS27130-53
20	5		67302	12022-1
20	6		67302	12090-110
20	7		67302	12125-1
20	8	4730-01-009-9052	41947	W1514
20	9		58553	92-180
20	10	4820-00-936-2235	07295	VUS3-46AC
20	11	4730-00-068-3362	41947	W-2612
20	12	4730-00-202-9200	41947	A-3494
20	13	5930-00-554-9358	73803	20PS002BB450K375 K
20	14		67302	12090-112
20	15	5305-00-984-6211	96906	MS35206-264
20	16	5310-00-045-3296	96906	MS35338-43
20	17	5310-00-809-8546	96906	MS27183-8
20	18		67302	12008-1
20	19		70255	EK-305-9
20	20	4730-00-813-3193	41947	W-2822
20	21		67302	12090-113
20	22	5310-00-934-9758	96906	MS35649-202
20	23		67302	12091-1
20	24		67302	12092-1
20	25	6680-00-777-9797	58553	50-IOS
20	26		41947	W-2722
20	27	5325-00-559-7850	14829	560
20	28		67302	12090-114
20	29	4730-00-815-5681	41947	W-4011
20	30		67302	12090-116
20	31	4820-00-545-0936	91494	328VA70328-048
20	32		67302	12090-117
20	33		67302	12090-115
20	34	5340-00-826-3969	96906	MS21919WDF18

## CROSS-REFERENCE INDEXES

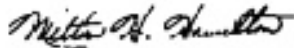
## FIGURE AND ITEM NUMBER INDEX

FIG.	ITEM	STOCK NUMBER	CAGEC	PART NUMBER
20	35		95098	12127-1
20	36		67302	12090-119
20	37	4730-00-254-6447	41947	W-2034
20	38	5340-00-351-4085	96906	MS21919WDF14
20	39		67302	12090-158
20	40	4730-00-995-9667	41947	W-1037
21	1	5306-00-226-4834	96906	MS9072841
21	2	5310-00-407-9566	96906	MS3533845
21	3	5310-00-081-4219	96906	MS27183-12
21	4		67302	12137-1
21	5		59431	70650-1
21	6		67302	12124-1
21	7	5310-00-880-7744	96906	MS51967-5
21	8		59431	018-0031-02
21	9		67302	12090-171
21	10	4730-00-818-7484	41947	W-2634
21	11		14569	CRN5-0500-TF5-270

TM 9-4120-398-24P

By Order of the Secretary of the Army:

Official:



**MILTON H. HAMILTON**  
*Administrative Assistant to the  
Secretary of the Army*  
03930

**GORDON R. SULLIVAN**  
*General, United States Army*  
*Chief of Staff*

**DISTRIBUTION:**

To be distributed in accordance with DA Form 12-25-E, block no. 6040, requirements for TM 9-4120-398-24P.



**RECOMMENDED CHANGES TO EQUIPMENT TECHNICAL PUBLICATIONS**

**SOMETHING WRONG WITH PUBLICATION**



*THEN...JOT DOWN THE DOPE ABOUT IT ON THIS FORM. CAREFULLY TEAR IT OUT, FOLD IT AND DROP IT IN THE MAIL.*

FROM: (PRINT YOUR UNIT'S COMPLETE ADDRESS)

DATE SENT

PUBLICATION NUMBER

PUBLICATION DATE

PUBLICATION TITLE

**BE EXACT PIN-POINT WHERE IT IS**

PAGE NO.

PARA-GRAPH

FIGURE NO.

TABLE NO.

**IN THIS SPACE, TELL WHAT IS WRONG AND WHAT SHOULD BE DONE ABOUT IT.**

TEAR ALONG PERFORATED LINE

PRINTED NAME, GRADE OR TITLE AND TELEPHONE NUMBER

SIGN HERE

## THE METRIC SYSTEM AND EQUIVALENTS

### Linear Measure

1 centimeter = 10 millimeters = .39 inch  
 1 decimeter = 10 centimeters = 3.94 inches  
 1 meter = 10 decimeters = 39.37 inches  
 1 dekameter = 10 meters = 32.8 feet  
 1 hectometer = 10 dekameters = 328.08 feet  
 1 kilometer = 10 hectometers = 3,280.8 feet

### Weights

1 centigram = 10 milligrams = .15 grain  
 1 decigram = 10 centigrams = 1.54 grains  
 1 gram = 10 decigrams = .035 ounce  
 1 dekagram = 10 grams = .35 ounce  
 1 hectogram = 10 dekagrams = 3.52 ounces  
 1 kilogram = 10 hectograms = 2.2 pounds  
 1 quintal = 100 kilograms = 220.46 pounds  
 1 metric ton = 10 quintals = 1.1 short tons

### Cubic Measure

1 cu. centimeter = 1000 cu. millimeters = .06 cu. inch  
 1 cu. decimeter = 1000 cu. centimeters = 61.02 cu. in.  
 1 cu. meter = 1000 cu. decimeters = 35.31 cu. feet

### Square measure

1 sq. centimeter = 100 sq. millimeters = .155 sq. in.  
 1 sq. decimeter = 100 sq. centimeters = 15.5 inches  
 1 sq. meter (centare) = 100 sq. decimeters = 10.76 feet  
 1 sq. dekameter (are) = 100 sq. meters = 1,076.4 sq. ft.  
 1 sq. hectometer (hectare) = 100 sq. dekameters = 2.47 acres  
 1 sq. kilometer = 100 hectometers = .386 sq. miles

### Liquid Measure

1 dekaliter = 10 liters = 2.64 gallons  
 1 hectoliter = 10 dekaliters = 26.42 gallons  
 1 kiloliter = 10 hectoliters = 264.18 gallons  
 1 liter = 10 deciliters = 33.81 fl. ounces  
 1 centiliter = 10 milliliters = .34 fl. ounce  
 1 deciliter = 10 centiliters = 3.38 fl. ounces  
 1 metric ton = 10 quintals = 1.1 short tons

### Approximate Conversion Factors

To change	To	Multiply by	To change	To	Multiply by
inches	centimeters	2.540	ounce inches	newton-meters	.0070062
feet	meters	.305	centimeters	inches	.394
yards	meters	.914	meters	feet	3.280
miles	kilometers	1.609	meters	yards	1.094
sq. inches	sq. centimeters	6.451	kilometers	miles	.621
sq. feet	sq. meters	.093	sq. centimeters	sq. inches	.155
sq. yards	sq. meters	.836	sq. meters	sq. yards	10.764
sq. miles	sq. kilometers	2.590	sq. kilometers	sq. miles	1.196
acres	sq. hectometers	.405	sq. hectometers	acres	2.471
cubic feet	cubic meters	.028	cubic meters	cubic feet	35.315
cubic yards	cubic meters	.765	milliliters	fluid ounces	.034
fluid ounces	milliliters	29.573	liters	pints	2.113
pints	liters	.472	liters	quarts	1.057
quarts	liters	.946	grams	ounces	.035
gallons	liters	3.785	kilograms	pounds	2.205
ounces	grams	28.349	metric tons	short tons	1.102
pounds	kilograms	.454	pound-feet	newton-meters	1.356
short tons	metric tons	.907			
pound inches	newton-meters	.11296			

### Temperature (Exact)

°F Fahrenheit temperature

$\frac{5}{9}$  ( after subtracting 32)

Celsius Temperature °C

**PIN: 071273-002**